

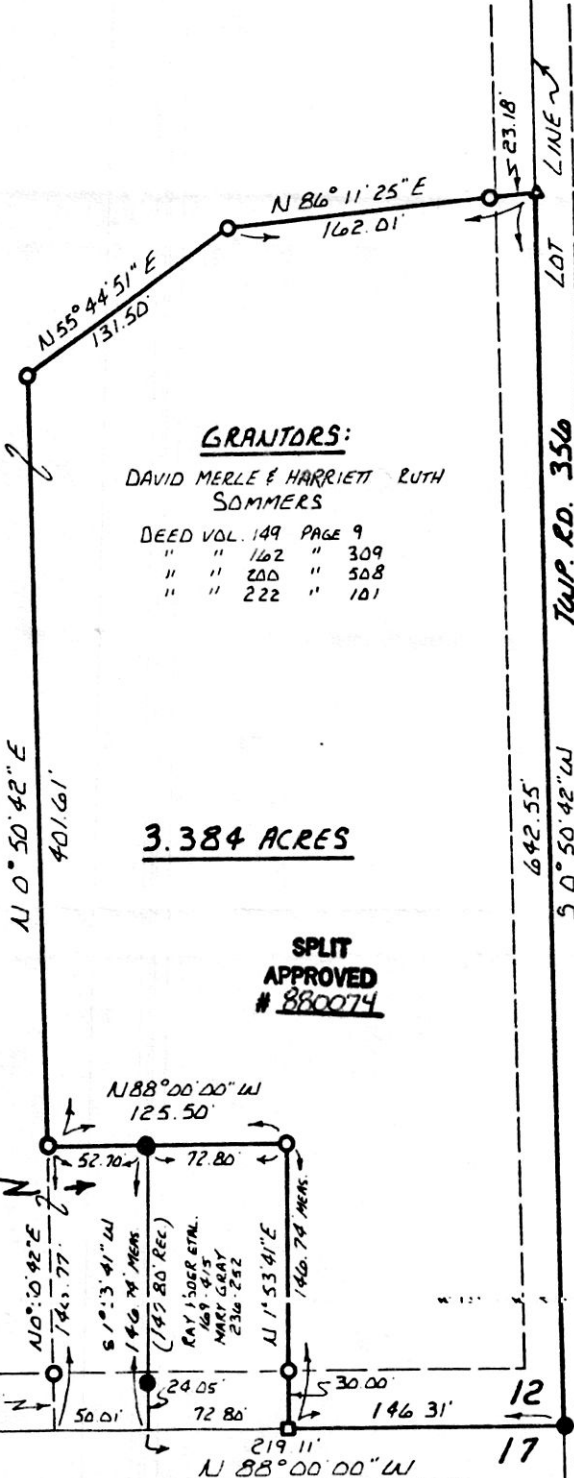
7 6
12 11

- IRON PIN FOUND
- ▲ REBAR SET
- SQUARE BAR SET
- 5/8" REBAR WITH I.D. CAP SET
I.D. CAP MARKED "BAKER 6938"

BEARINGS FROM PLAT VOL. 7 PAGE 703
REFERENCE: DEED VOL. 154 PAGE 405

This 3.384 Ac. plat is approved for
wastewater.

Mat Miller
Sanitarian
5-5-88
Date



GRANTORS:

DAVID MERLE & HARRIETT LUTH
SOMMERS
DEED VOL. 149 PAGE 9
" " 162 " 309
" " 200 " 508
" " 222 " 101

3.384 ACRES

**SPLIT
APPROVED
880074**

I CERTIFY THIS SURVEY TO BE CORRECT
TO THE BEST OF MY KNOWLEDGE.

Donald C. Baker
DONALD C. BAKER P.S. 6938
4321 TR 252
GLENMONT, OH. PH. 377-4177

FEB. 23, 1788



159998 EASEMENT
FOR INGRESS & EGRESS

MAP OFFICE COPY

13 12
18 17

Rec'd. JUN 3 1988
JUN 6 1988
Recorded
Plat Vol. 12

ST. RT. 557
AT 7:59 O'CLOCK PM

Holmes Co. Ohio Fee: 5.00
Pg. 6

Deed Vol. 239 Pg. 270

Richard H. Palmer