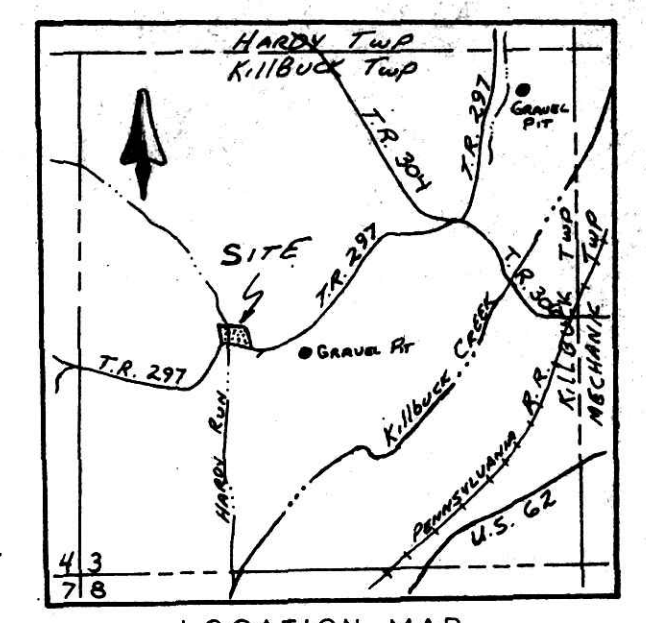


158130

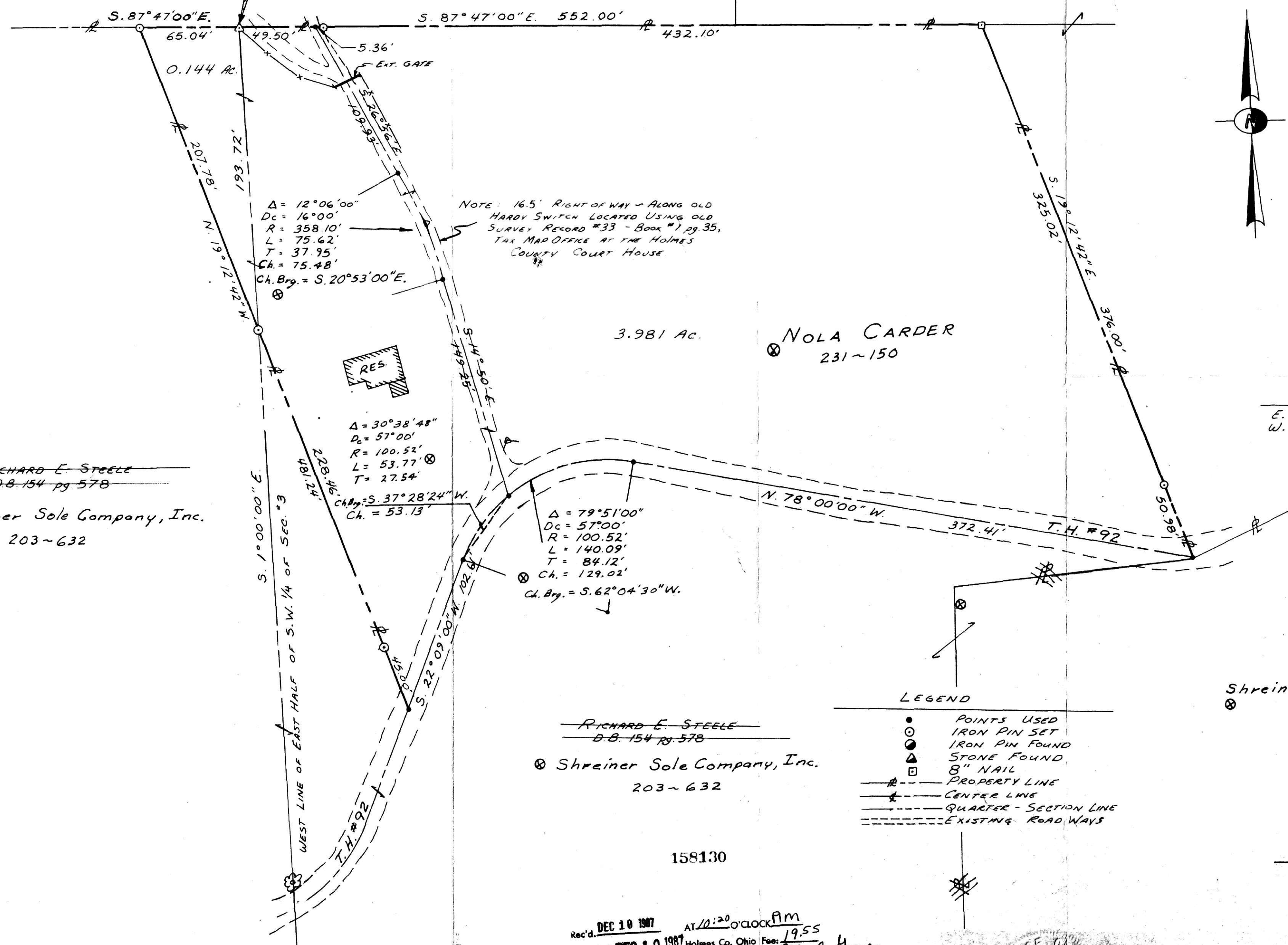
WILLIAM & ELLEN M. MARTIN  
D.B. 181 pg. 873

JAY H. & DEBORAH E. KASER  
D.B. 182 pg. 24



TRUE PLACE OF BEGINNING

Stone Found at the N.W. Corner of the East Half of Southwest Quarter of Section 3, T. 8 N., R. 7 W., U.S.M.L.



ACREAGE TABLE

E. 1/2 of S.W. QTR.	3.981	Ac.
W. 1/2 of S.W. QTR.	0.144	Ac.
TOTAL	4.125	Ac.

~~RICHARD E. STEELE~~  
D.B. 154 pg. 578  
Shreiner Sole Company, Inc.  
203-632

~~RICHARD E. STEELE~~  
D.B. 154 pg. 578  
Shreiner Sole Company, Inc.  
203-632

Shreiner Sole Company, Inc.  
203-632

158130

Rec'd. DEC 10 1987 AT 12:20 O'CLOCK PM  
Recorded DEC 10 1987 Holmes Co. Ohio Fee: 19.55  
Plot Vol. 11 Pg. 173 Recorder: Richard Weaver  
17X23K5 Deed Vol. 237 Page 338

I HEREBY CERTIFY THAT THIS PLAT IS A TRUE DELINEATION OF A SURVEY BY  
GEORGE W. JOHNSON R.S. #5252  
George W. Johnson

NOLA CARDER  
KENDALL MAYNOR  
PART OF THE NORTH HALF OF THE SOUTHWEST QTR OF SEC. 3 TOWNSHIP 8, RANGE 7 KILLBUCK TOWNSHIP HOLMES COUNTY, OHIO

Buckeye Land Surveying, Inc.  
George W. Johnson 215 South Fifth Street, R. 2, Columbus, Ohio 43211 (614) 422-4210  
Professional Land Surveyor "Service is more than a promise."

Rev'd. @ Sept, 1987 George W. Johnson

SCALE: 1" = 50' MARCH, 1976