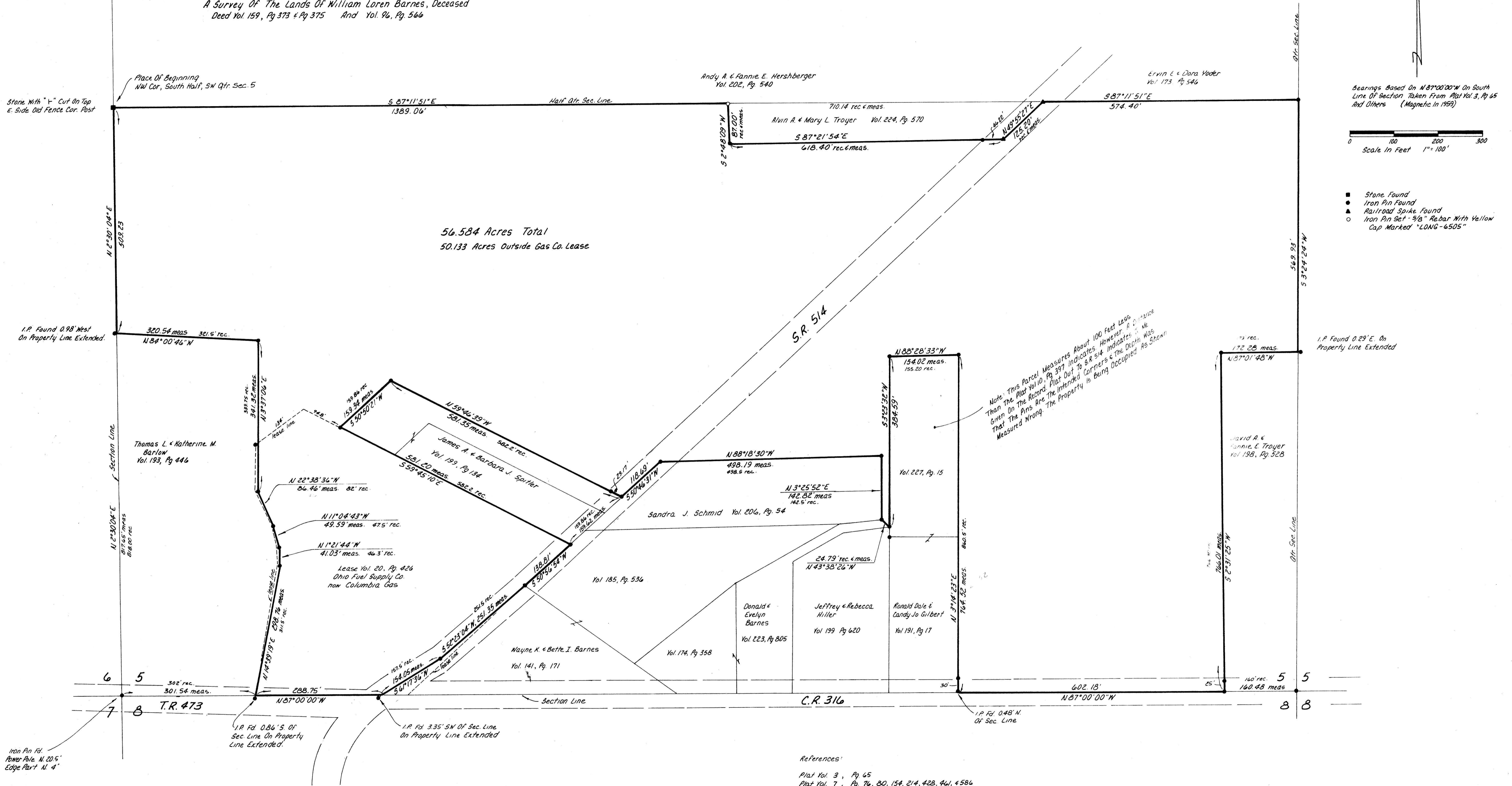


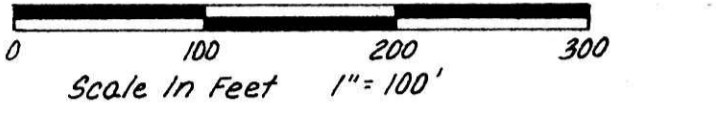
RIPLEY TOWNSHIP
HOLMES COUNTY, OHIO
SOUTHWEST QUARTER, SECTION 5, T-17N, R-14W

A Survey Of The Lands Of William Loren Barnes, Deceased
Deed Vol. 159, Pg. 373 & Pg. 375 And Vol. 96, Pg. 566

154761



Bearings Based On N87°00'00"W On South Line Of Section Taken From Plat Vol. 3, Pg. 65 And Others (Magnetic In 1959)



- Stone Found
- Iron Pin Found
- ▲ Railroad Spike Found
- Iron Pin Set - 3/8" Rebar With Yellow Cap Marked "LONG-6505"

Note: This Parcel Measures About 100 Feet Less Than The Plat Vol. 10, Pg. 397 Indicates. However, It Is Indicated On The Record Plat Out To S.R. 514 That The Pins Are The Intended Corners & The Depth Was Measured Wrong. The Property Is Being Occupied As Shown.

- References:
- Plat Vol. 3, Pg. 65
 - Plat Vol. 7, Pg. 76, 80, 154, 214, 428, 441, 4584
 - Plat Vol. 10, Pg. 291 & 397
 - Plat Vol. 11, Pg. 5
 - Lease Vol. 20, Pg. 426
 - Deeds As Shown

154761

I Certify This Survey To Be Correct To The Best Of My Knowledge
William H. Long July 31, 1986
 William H. Long R.S. 6505
 13301 T.R. 503
 Big Prairie, Ohio 44611

REC'D FEB 2 1987
 AT 1:33 O'CLOCK PM
 RECORDED Feb 3, 1987
 Plat VOL 11 PG. 133
 Holmes Co. Ohio Fee: 42.00
 Richard Wenson Recorder
 24 X 35 X 1/2

Wayne C. Dittl
 Deed Vol. 234 Pg. 162