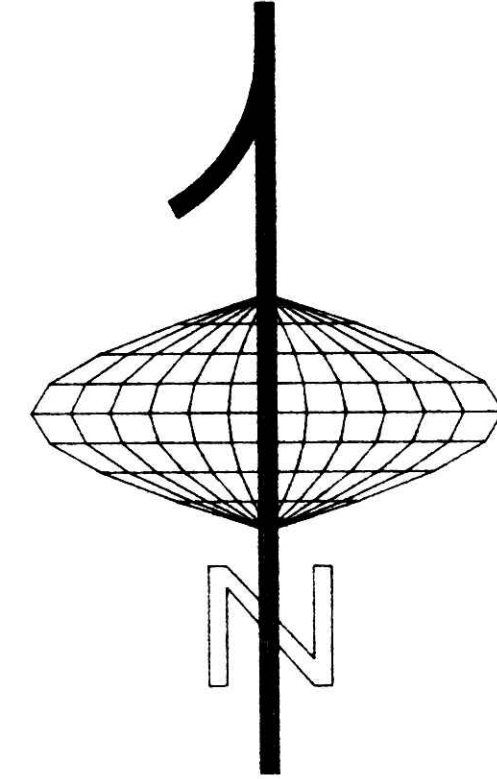
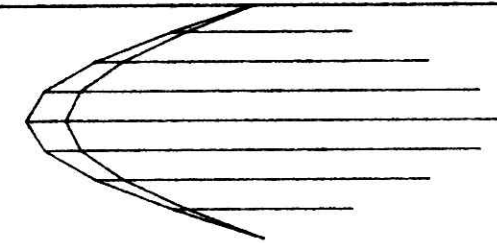
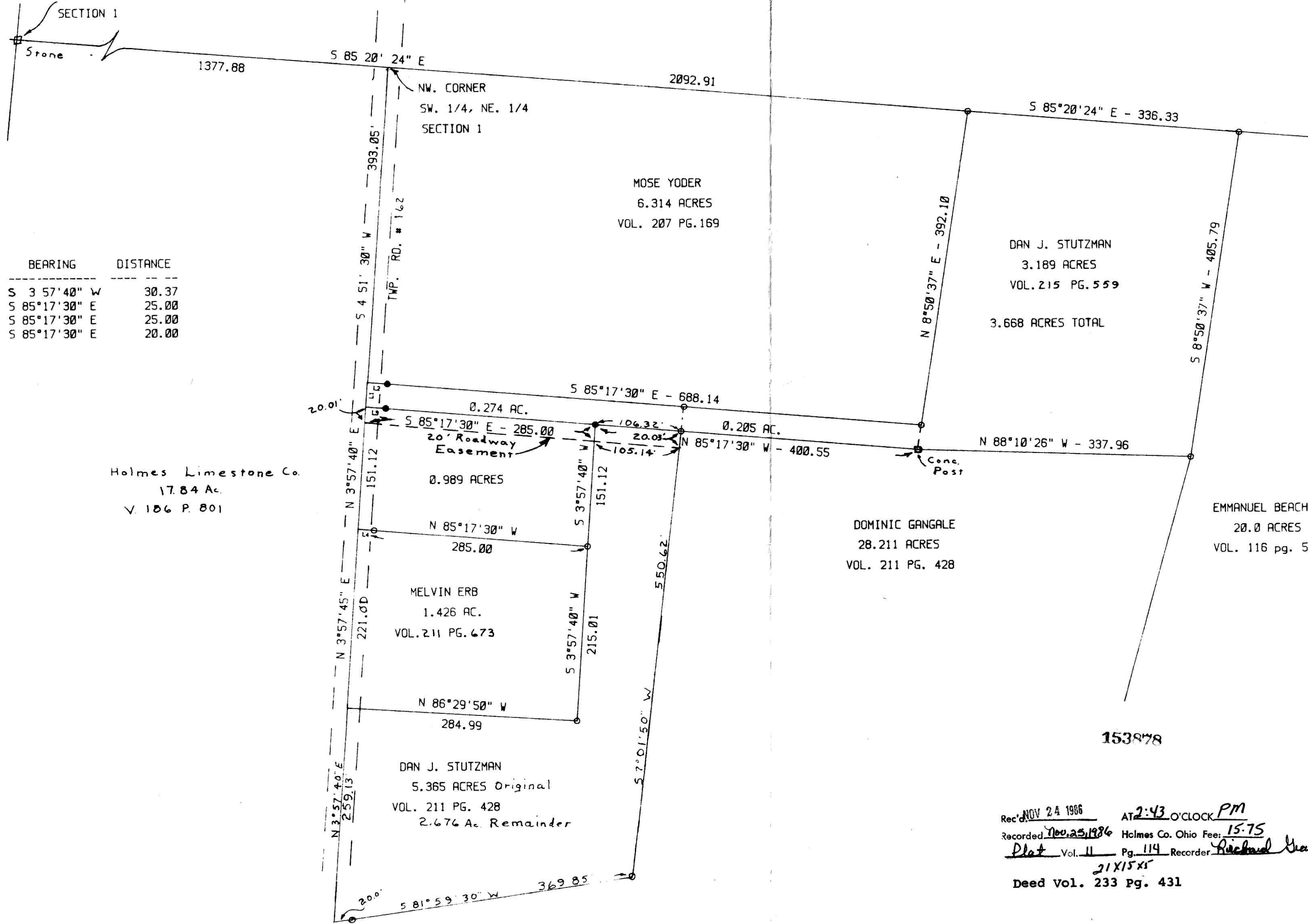


153878



LESTER HOSTETLER
59.75 ACRES

NW. CORNER
SE. 1/4, NW. 1/4
SECTION 1



LINE	BEARING	DISTANCE
L1	S 3°57'40" W	30.37
L2	S 85°17'30" E	25.00
L3	S 85°17'30" E	25.00
L4	S 85°17'30" E	20.00

Holmes Limestone Co.
17.84 Ac.
V. 106 P. 801

DAN J. STUTZMAN
5.365 ACRES Original
2.676 Ac. Remainder

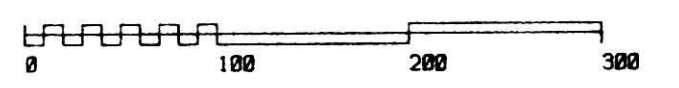
DOMINIC GANGALE
28.211 ACRES
VOL. 211 PG. 428

EMMANUEL BEACHY
20.0 ACRES
VOL. 116 pg. 569

Rec'd NOV 24 1986 AT 2:43 O'CLOCK PM
Recorded NOV 25 1986 Holmes Co. Ohio Fee: 15.75
Plot Vol. 11 Pg. 114 Recorder: Richard Weaver
21X15X5
Deed Vol. 233 Pg. 431

PLYE SURVEYING
116 SOUTH BROADWAY
NEW PHILADELPHIA, OHIO
44663

- DENOTES IP SET 5/8" W. Cap.
 - DENOTES IP FOUND
- BEARINGS ORIENTED TO: 5.365 Ac Tr.
DOCUMENTS USED WERE DEEDS, VOL. & PGS. AS SHOWN



I HEREBY CERTIFY THIS PLAT IS TRUE AND
CORRECT TO THE BEST OF MY KNOWLEDGE AND BELIEF

John P. Pyle
John P. Pyle
SURVEYOR

15.75

SURVEY FOR DAN J. STUTZMAN
NE 1/4 SEC. 1 T-8, R-5

SCALE: 100 FEET/INCH	APPROVED BY: J P P	DRAWN BY:
DATE: 6-11-86	REVISOR BY: J. P.	11/86

WALNUTCREEK TWP.
HOLMES CO. OHIO