

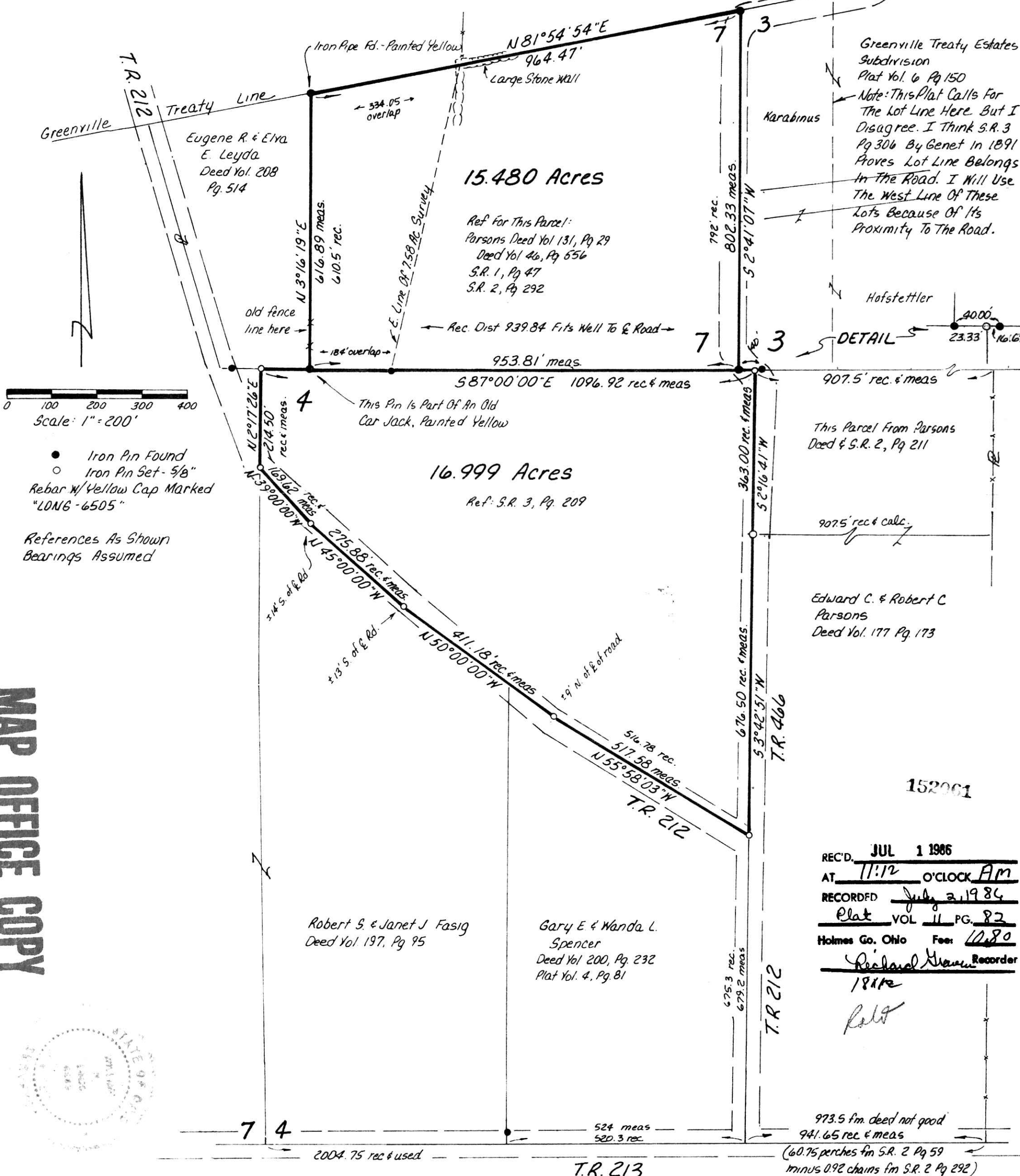
KNOX TOWNSHIP  
HOLMES COUNTY, OHIO  
LOTS 4 & 7, 2ND QTR., T-9N, R-9W

A Survey Of The Lands Owned By The Estate Of  
Mary G. Parsons - Deed Vol. 131, Pg. 29 - Surveyed For  
John W. Deibel, Attorney

Deed Vol. 231 Pg. 652

Note: Leyda's Deed Is Based On A 758 Acre  
Survey By Clyde Purdy Which Overlaps Onto  
The Parsons Lands By 3.3 Acres. See Plat  
Vol. 7, Pg 770.

S.R. 3 Pg 306 Calls for  
5.24 Chains Between Stones  
Found At The S.W. Cor Sec 26 &  
NW Cor Lot 3. This Fits The  
Jog In The Road Nicely.



Scale: 1" = 200'

● Iron Pin Found  
○ Iron Pin Set - 5/8"  
Rebar w/ Yellow Cap Marked  
"LONG-6505"

References As Shown  
Bearings Assumed

MAP OFFICE COPY



Greenville Treaty Estates  
Subdivision  
Plat Vol. 6 Pg 150  
Note: This Plat Calls For  
The Lot Line Here But I  
Disagree. I Think S.R. 3  
Pg 306 By Genet In 1891  
Proves Lot Line Belongs  
In The Road. I Will Use  
The West Line Of These  
Lots Because Of Its  
Proximity To The Road.

Hofstettler  
DETAIL  
40.00'  
23.33'  
16.67'

This Parcel From Parsons  
Deed & S.R. 2, Pg 211  
907.5' rec & meas

Edward C. & Robert C  
Parsons  
Deed Vol. 177 Pg 173

Robert S. & Janet J Fasig  
Deed Vol 197, Pg 95

Gary E & Wanda L.  
Spencer  
Deed Vol 200, Pg. 232  
Plat Vol. 4, Pg 81

REC'D. JUL 1 1986  
AT 11:12 O'CLOCK AM  
RECORDED July 2, 1986  
Plat VOL 11 PG. 82  
Holmes Co. Ohio Fee: 10.80  
Richard H. Haver Recorder  
18112  
Rolt

973.5 fm deed not good  
941.65 rec & meas  
(60.75 perches fm S.R. 2 Pg 59  
minus 0.92 chains fm S.R. 2 Pg 292)

I Certify This Survey To Be Correct To The Best Of My Knowledge  
William H. Long Feb. 26, 1986  
William H. Long R.S. 6505  
13301 T.R. 503  
Big Prairie, Ohio 44611