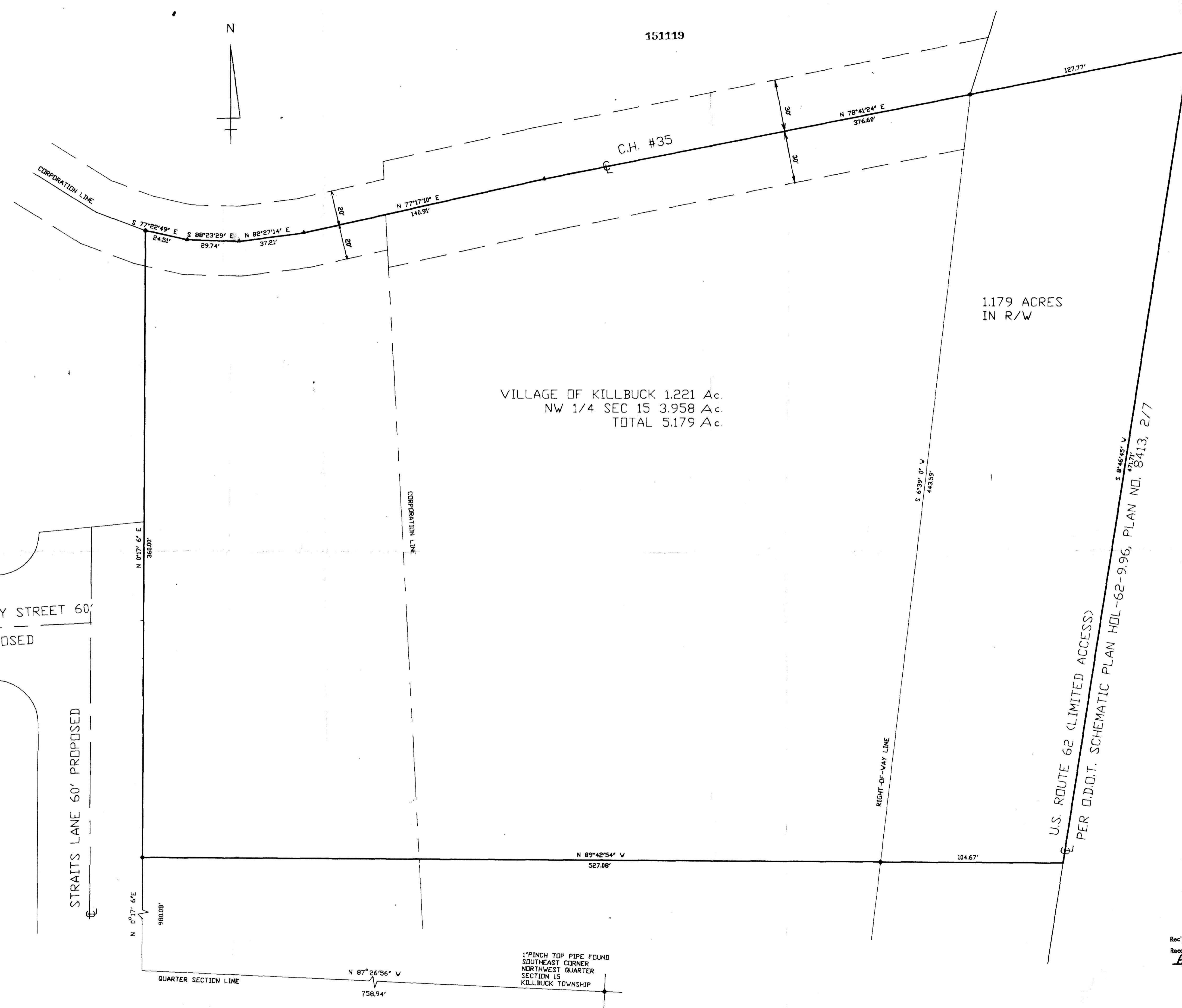




151119



VILLAGE OF KILLBUCK 1.221 Ac  
 NW 1/4 SEC 15 3.958 Ac  
 TOTAL 5.179 Ac

1.179 ACRES  
 IN R/W

U.S. ROUTE 62 (LIMITED ACCESS)  
 PER O.D.O.T. SCHEMATIC PLAN HOL-62-9.96, PLAN NO. 8413, 2/7

- LEGEND**
- ▲ PK NAIL FOUND, 1/2" REBAR WITH CAP SET
  - 1/2" REBAR WITH CAP SET (UNLESS OTHERWISE NOTED)

**DATA USED**

TAX MAPS- VILLAGE OF KILLBUCK K-18A SECTION 15 KILLBUCK TOWNSHIP

DEEDS- VOLUME 206 PAGE 60

O.D.O.T. MAPS- SCHEMATIC PLAN, HOL-62-9.96, PLAN NO.8413 2/7 R/W PLAN, HOL-62(10.00-14.10) 156/156, 4/5

MAPS OF SURVEY- PLAT VOLUME 9, PAGE 36 UNRECORDED ROAD DEDICATION PLAT, 2.238 ACRES FOR CHARLES STRAITS, BY HAMMONTREE & ASSOCIATES LIMITED, DATED DEC. 1984

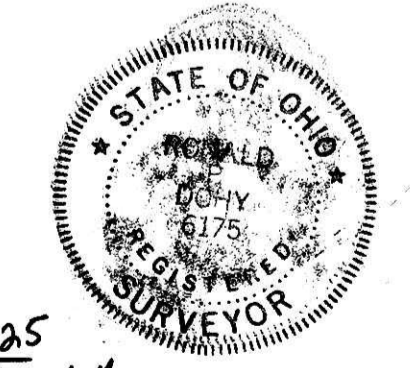
THE BASIS OF BEARINGS IS N05 57'09"W THE EAST RIGHT-OF-WAY LINE OF THE DRESDEN BRANCH OF THE C.A. AND C. RAILROAD, TAKEN FROM A DEED RECORDED IN VOLUME 206 PAGE 60 OF THE HOLMES COUNTY DEED RECORDS.

I HEREBY CERTIFY THAT THIS IS A CORRECT SURVEY MADE BY ME OF A 5.179 ACRE TRACT, SITUATED IN THE TOWNSHIP OF KILLBUCK, AND THE VILLAGE OF KILLBUCK, COUNTY OF HOLMES, AND STATE OF OHIO, AND BEING PART OF THE NORTHWEST QUARTER OF SECTION 15 (T-8, R-7)

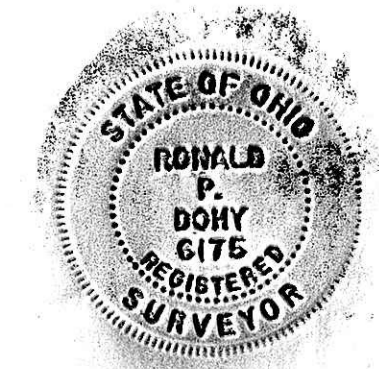
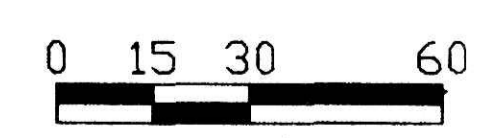
THIS CERTIFICATION MADE BY ME THIS 25TH DAY OF FEBRUARY 1986.

*Ronald P. Dohy P.S.*  
 RONALD P. DOHY PS #6175

151119



Rec'd. APR 23 1986 AT 2:44 O'CLOCK PM  
 Recorded April 24, 1986 Holmes Co. Ohio Fee: 40.25  
 Plat 1 Vol. 11 Pg. 72 Recorder Richard Chaffey  
 DEED Vol. 230 - Pg. 948



MAP OF SURVEY  
 5.179 ACRES  
 VILLAGE OF KILLBUCK  
 NW 1/4 SEC 15 KILLBUCK TWP. (T-8, R-7)  
 HOLMES COUNTY, OHIO

DATE: FEB 86  
 SCALE: 1" = 30'  
 DWG. NO.

HAMMONTREE & ASSOCIATES, LTD.  
 ENGINEERS - PLANNERS - SURVEYORS  
 CANTON - AKRON, OHIO  
 CANTON: 216/499-8817  
 AKRON: 216/633-7274



NO. 11 MAR 72