

PRAIRIE TOWNSHIP

PART OF

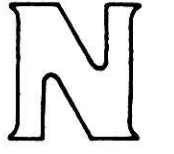
S.W. QTR. SEC. 6

N.W. QTR. SEC. 7

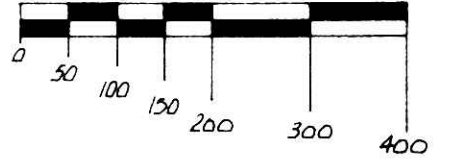
N.E. QTR. SEC. 7

TWP. 13N RANGE 13W

HOLMES COUNTY OHIO



SCALE 1"=200'



● IRON CORNER FOUND

○ 5/8" x 30" REBAR SET WITH I.D. CAP

□ STONE FOUND

* HOLMES COUNTY PHOTOS 1153 & 1156

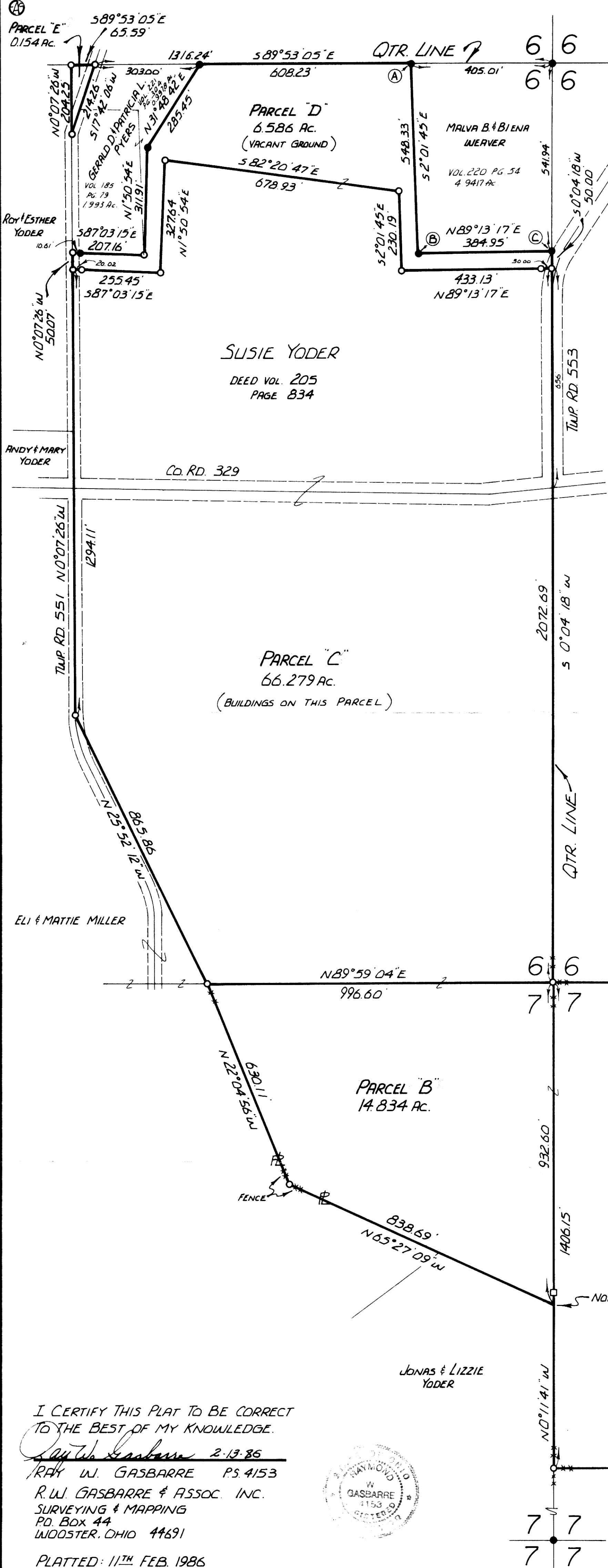
NOTE: MONUMENTS FOUND AT (A), (B) & (C) BEAR THE FOLLOWING COURSES FROM THE TRUE CORNERS OF THIS SURVEY.

(A) S 2°13'58"E 6.96'

(B) N 69°21'52"E 1.60'

(C) N 79°08'41"W 2.08'

PARCEL "A" 26.545 AC. NE 1/4 7
 PARCEL "B" 14.834 AC. NW 1/4 7
 PARCEL "C" 66.279 AC. SW 1/4 6
 PARCEL "D" 6.586 AC. SW 1/4 6
 PARCEL "E" 0.154 AC. SW 1/4 6
 TOTAL 114.398 AC.



I CERTIFY THIS PLAT TO BE CORRECT TO THE BEST OF MY KNOWLEDGE.
 RAY W. GASBARRE 2-13-86
 RAY W. GASBARRE P.S. 4153
 R.W. GASBARRE & ASSOC. INC.
 SURVEYING & MAPPING
 P.O. BOX 44
 WOODSTER, OHIO 44691
 PLATTED: 11TH FEB. 1986



MAP OFFICE COPY

151007

Rec'd. APR 15 1986 AT 1:10 O'CLOCK PM
 Recorded by [Signature] Holmes Co. Ohio Fees 19.55
 Plat Vol. 11 Pg. 71 Recorder [Signature]
 DEED Vol. 230 - Pg. 369