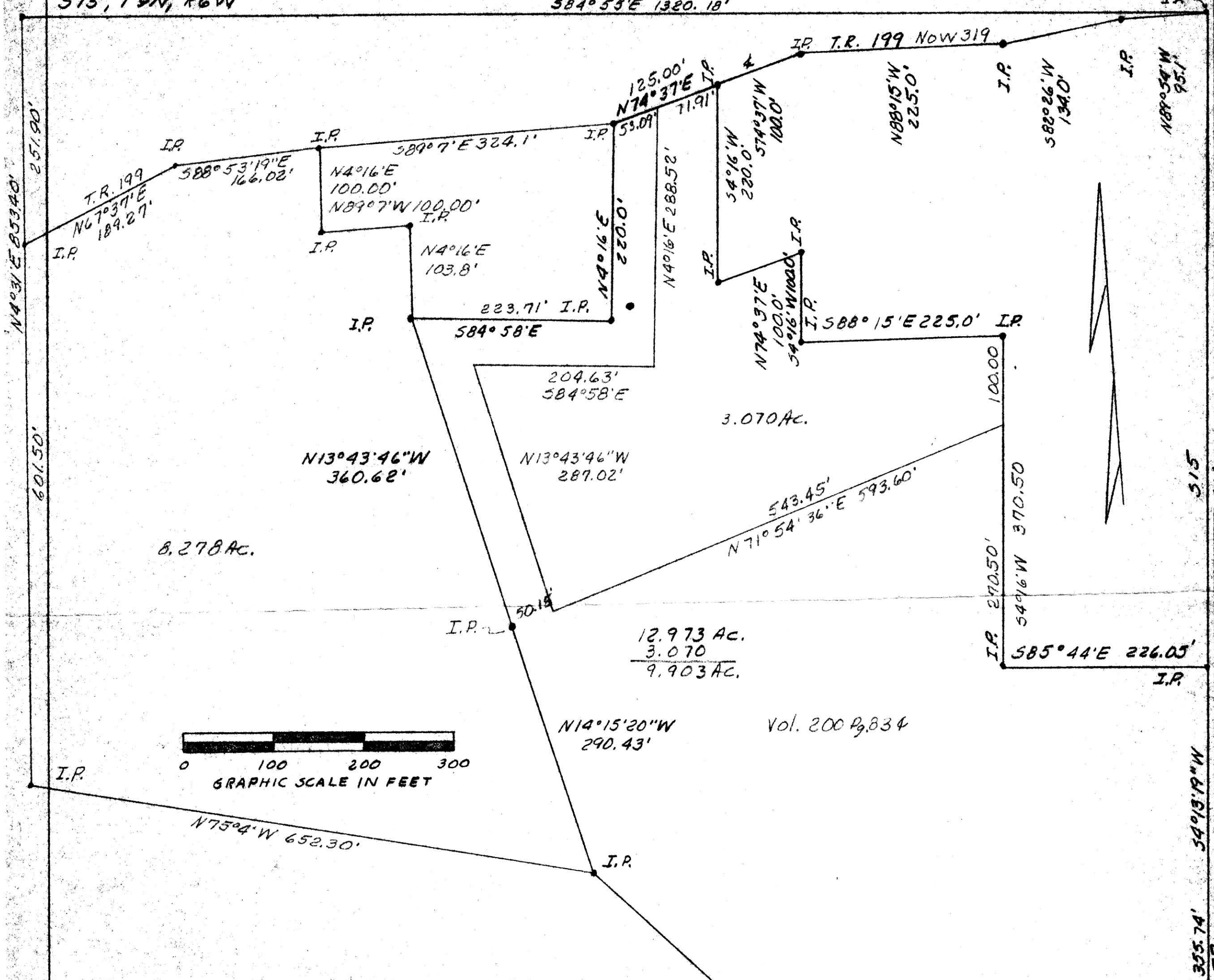


N.W. CORNER NE 1/4  
S15, T9N, R6W

NE. CORNER S15, T9N, R6W



**PLAT OF A SURVEY FOR  
ATLEE RABER**  
Grantee  
Known as part of N.E. 1/4 S15,  
T9N, R6W of Hardy Twp.,  
Hol. Co., Ohio.  
Robert L. Kasnar P.S. 5193

150605

Rec'd. MAR 4 1986 AT 1:28 O'CLOCK Pm  
Recorded March 5, 1986 Holmes Co. Ohio Fee: 11.20  
Plat Vol. 11 Pg. 66 Recorder Richard Strauss  
14X16X5 Deed Vol. 230-Pg. 445



Rjt