

LEGEND

- IRON PIN FOUND
- 1/2" X 30" RE-BAR SET W/CAP
- ▲ R/R SPIKE SET

A
 $\Delta = 0^\circ 15' 30''$
 $R = 5729.578$
 $D_c = 1'$
 $L_c = 25.83'$
 $Ch = 25.83'$
 $Ch Brg = S 64^\circ 00' 29'' W$

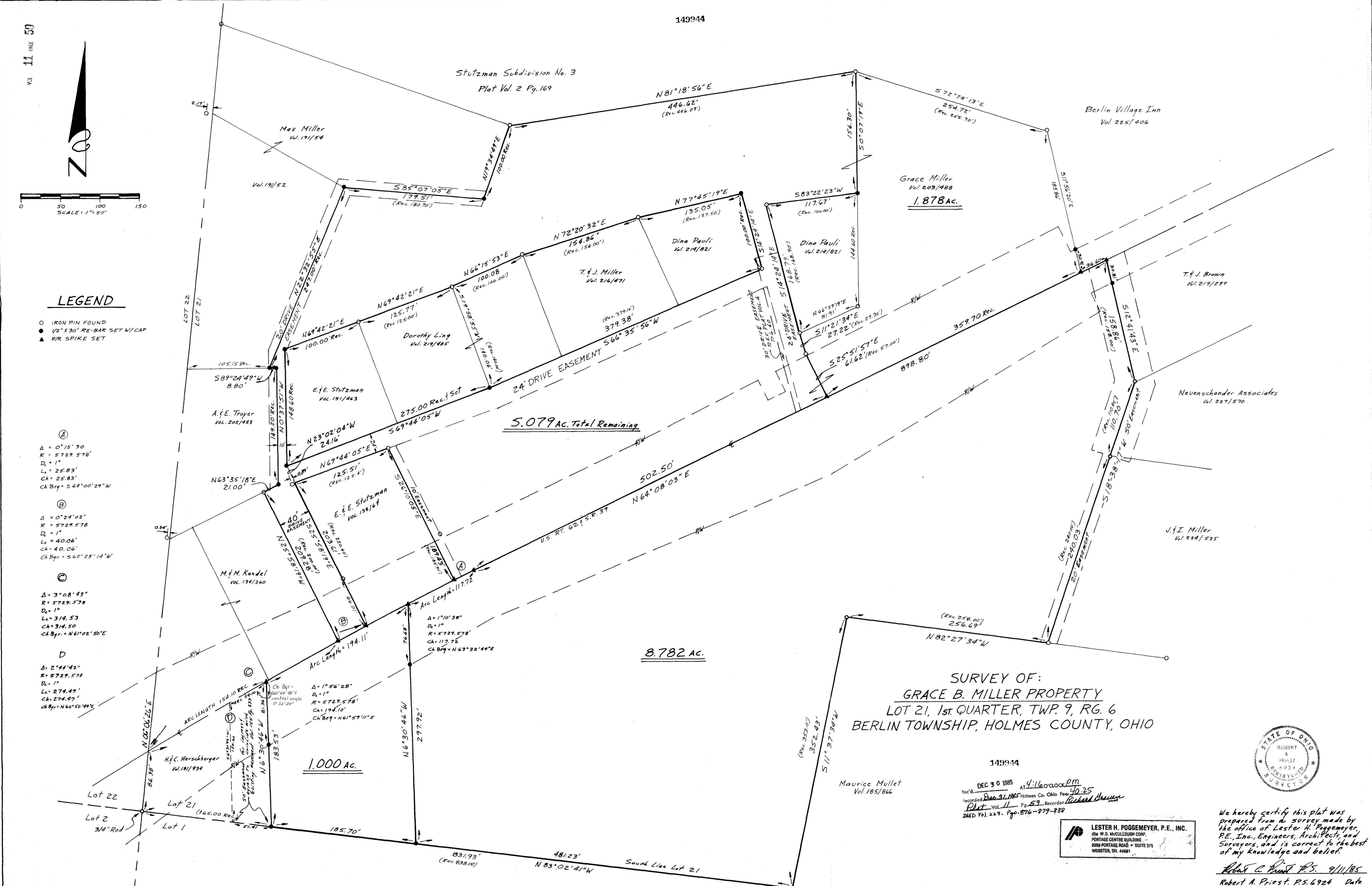
B
 $\Delta = 0^\circ 24' 02''$
 $R = 5729.578$
 $D_c = 1'$
 $L_c = 40.06'$
 $Ch = 40.06'$
 $Ch Brg = S 62^\circ 25' 14'' W$

C
 $\Delta = 3^\circ 08' 43''$
 $R = 5729.578$
 $D_c = 1'$
 $L_c = 314.53'$
 $Ch = 314.50'$
 $Ch Brg = N 61^\circ 02' 50'' E$

D
 $\Delta = 2^\circ 44' 42''$
 $R = 5729.578$
 $D_c = 1'$
 $L_c = 274.47'$
 $Ch = 274.47'$
 $Ch Brg = N 60^\circ 50' 44'' E$

E
 $\Delta = 1^\circ 56' 28''$
 $D_c = 1'$
 $R = 5729.578$
 $Ch = 194.10'$
 $Ch Brg = N 61^\circ 59' 11'' E$

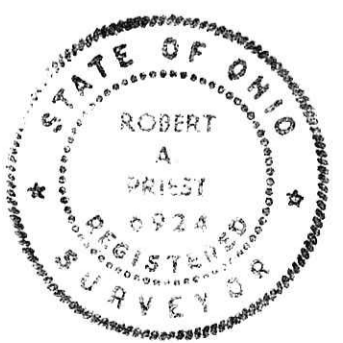
F
 $\Delta = 1^\circ 10' 38''$
 $D_c = 1'$
 $R = 5729.578$
 $Ch = 117.75'$
 $Ch Brg = N 63^\circ 32' 44'' E$



SURVEY OF:
GRACE B. MILLER PROPERTY
 LOT 21, 1st QUARTER, TWP. 9, RG. 6
 BERLIN TOWNSHIP, HOLMES COUNTY, OHIO

149944

DEC 30 1985 AT 4:16 o'clock PM
 Rec'd. [Signature] Holmes Co. Ohio Fees \$40.25
 Recorded [Signature] [Signature]
 Plat Vol. 11 Pg. 59 Recorder [Signature]
 DEED Vol. 229 - Pgs. 876-877-888



LESTER H. POGGEMEYER, P.E., INC.
 dba W.D. McCULLOUGH CORP.
 PORTAGE CENTRE BUILDING
 2008 PORTAGE ROAD - SUITE 375
 WOOSTER, OH. 44691

We hereby certify this plat was prepared from a survey made by the office of Lester H. Poggemeyer, P.E., Inc., Engineers, Architects, and Surveyors, and is correct to the best of my knowledge and belief.

Robert A. Priest P.S. 9/11/85
 Robert A. Priest, P.S. 6924 Date
 REVISED 12/10/85 50' EASEMENT ADDED