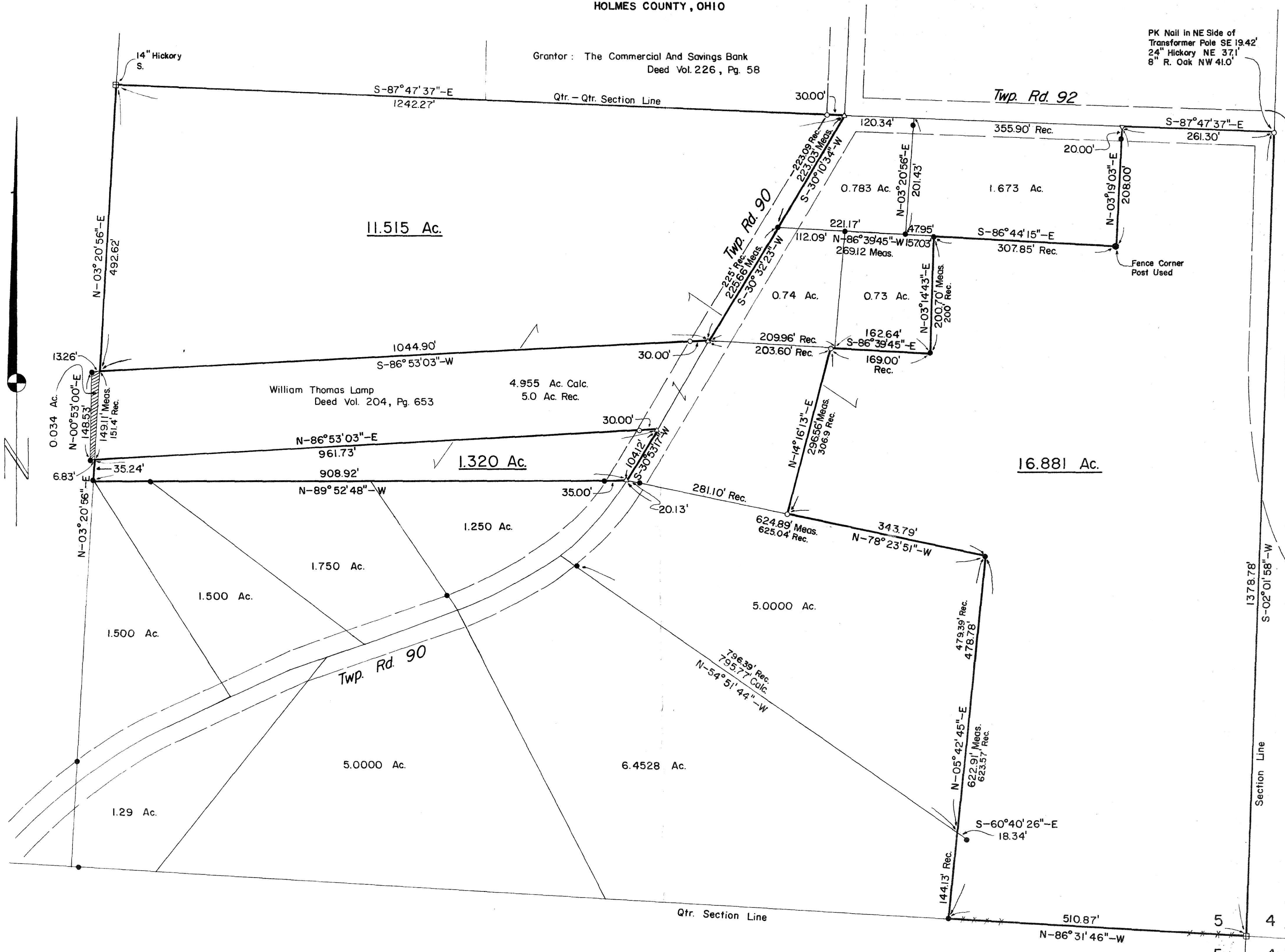


SURVEY PLAT
of an 11.515 ACRE PARCEL, a 1.320 ACRE PARCEL, and a 16.881 ACRE PARCEL

NE QUARTER of SECTION 5
T-8-N, R-7-W
Killbuck Township
HOLMES COUNTY, OHIO

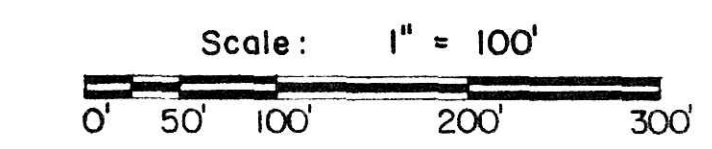
Grantor: The Commercial And Savings Bank
Deed Vol. 226, Pg. 58

PK Nail in NE Side of
Transformer Pole SE 19.42'
24" Hickory NE 37.1'
8" R. Oak NW 41.0'



Vol 11 PAGE 58

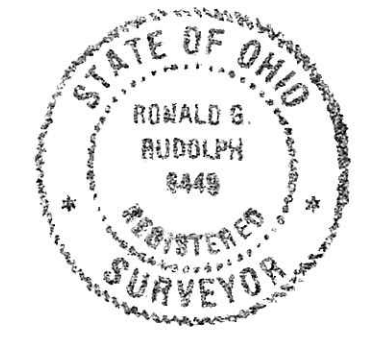
- ⊕ Stone Corner With "X" On Top Fd.
- Iron Pipe or Pin Fd.
- △ 5/8" x 15" Rebar Set In Roadway
- 5/8" x 30" Rebar With Yellow Plastic Cap Marked RUDOLPH Set 6449



Note: Bearing Of North Line Of 11.515 Ac.
& 16.881 Ac. Is From Plat Vol. 8, Pg. 110

Reference Surveys

- Deed Vol. 226, Pg. 58
- Deed Vol. 204, Pg. 653
- Plat Vol. 4, Pg. 41
- Plat Vol. 5, Pg. 79
- Plat Vol. 6, Pg. 90
- Plat Vol. 7, Pg. 251
- Plat Vol. 7, Pg. 252
- Plat Vol. 7, Pg. 253
- Plat Vol. 8, Pg. 17
- Plat Vol. 8, Pg. 110



I Certify This Survey And Plat To Be Correct To The Best Of My Knowledge.

Date: 10-28-85
Ronald G. Rudolph, P.S. No. 6449
R.G. RUDOLPH SURVEYING, Inc.
405 W. Liberty St.
Wooster, Ohio 44691

Job No. 1885

149913

REC'D. DEC 30 1985
AT 10:28 O'CLOCK A.M.
RECORDED DEC 30 1985
Plat VOL 11 PG. 58
Holmes Co. Ohio Fee: 25.20
Richard Green Recorder
24 x 21 x .05
Deed Vol. 229 - Pgs. 843 & 845