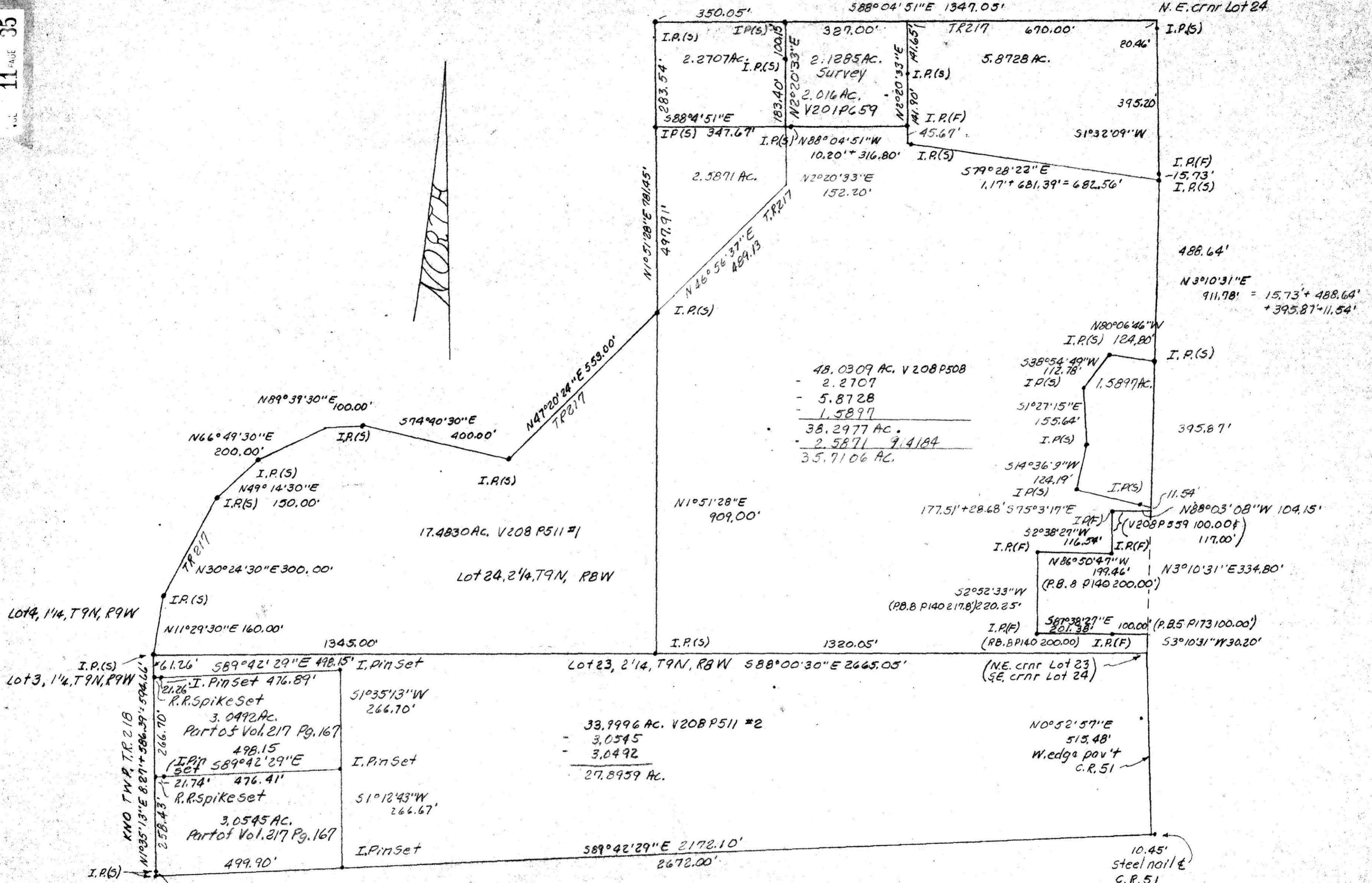
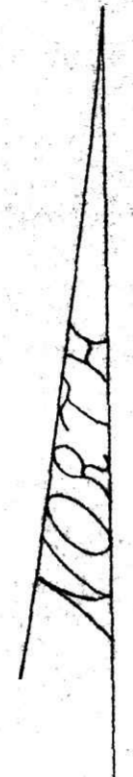
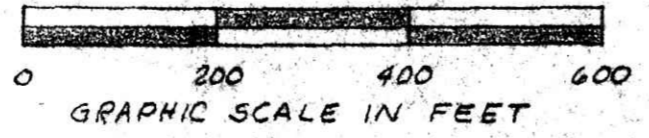


147478



48.0309 AC. V 208 P508  
 - 2.2707  
 - 5.8728  
 - 1.5897  
 -----  
 38.2977 AC.  
 - 2.5871 914184  
 35.7106 AC.

33.9996 AC. V 208 P511 #2  
 - 3.0545  
 - 3.0492  
 -----  
 27.8959 AC.



211181  
914184

PLAT OF A SURVEY OF  
 GLASGO FARM  
 KNOWN as part of Lots 23 & 24  
 2nd Qtr., T9N, R8W, of Monroe  
 Twp., Hol. Co., Ohio.  
 Robert L. Kasner P.S. 5193  
 P.E. 28820

147478

Rec'd JUN 18 1905 AT 2:40 O'CLOCK PM  
 Recorded JUN 19 1905 Holmes Co. Ohio Fee 14.25  
 P.S. Vol. 11 Pg. 35 Recorder Richard Brown  
 Mtg. Vol. 146-Pg. 435

