

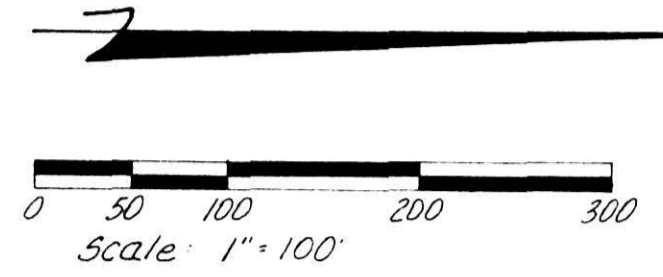
SW Cor Sec 6
Sta. 17+34.66, 43.72' Lt

Note: Location of Section Corner Was Determined
From R/W Plans For The Bridge Over Killbuck Creek
See State Issue 1 Project RS-1379 Plans in
Co. Engineer's Office

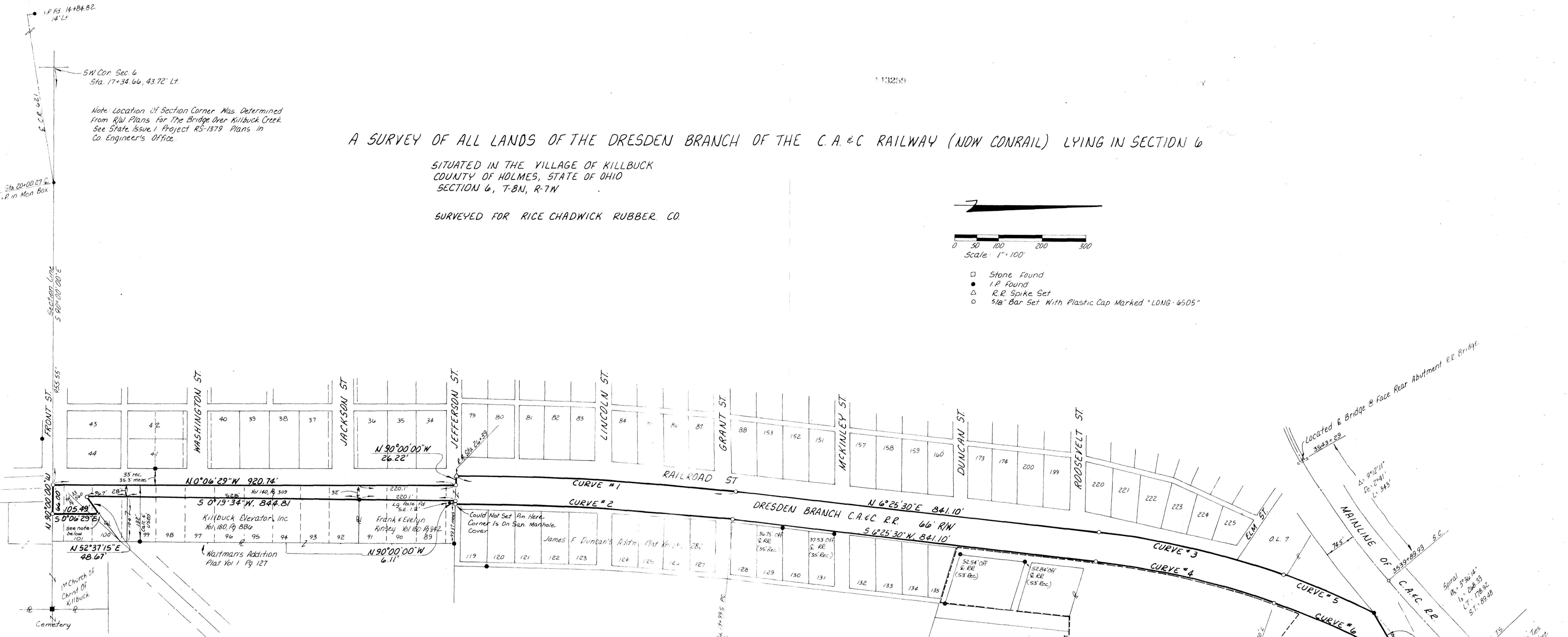
A SURVEY OF ALL LANDS OF THE DRESDEN BRANCH OF THE C.A.&C RAILWAY (NOW CONRAIL) LYING IN SECTION 6

SITUATED IN THE VILLAGE OF KILLBUCK
COUNTY OF HOLMES, STATE OF OHIO
SECTION 6, T-8N, R-7W

SURVEYED FOR RICE CHADWICK RUBBER CO.



- Stone Found
- I.P. Found
- △ R.R. Spike Set
- 5/8" Bar Set With Plastic Cap Marked "LONG-6505"



TOTAL ACREAGE OF PARCEL = 4.021 Acres

References:
R.R. R/W's Track Maps (VID OHIO)

- Tax Maps
Deed Vol 180, Pg 836
Vol 180, Pg 841
Vol 126, Pg 375
Vol 140, Pg 346
Vol 140, Pg 309
Vol 33, Pg 560, 561 & 562
Survey Record Vol 3, Pg 171 (Duncan's Add'n)
Vol 4, Pg 371 (Stone in Cem)
Vol 4, Pg 377
Vol 4, Pg 203
Plat Vol 1, Pg 282 (Duncan's Add'n)
Plat Vol 1, Pg 127 (Waltman's Addition)
Plat Vol 3, Pg 42
Deed Vol 2, Pg 604 (Orig. Town Plat)

I Certify This Survey To Be Correct To The Best Of My Knowledge
William H. Long August 23, 1983
William H. Long R.S. 6505
R.D. 1 Box 69A
Big Prairie, Ohio 44611

- CURVE #1**
Δ = 6°23'46"
R = 5762.65'
L = 643.32'
Ch = 642.99'
Chord Brg = N 3°13'37"E
- CURVE #2**
Δ = 6°23'45"
R = 5696.65'
L = 635.92'
Ch = 635.59'
Chord Brg = S 3°13'37"W
- CURVE #3**
Δ = 12°45'00"
R = 1943.08'
L = 432.39'
Ch = 431.50'
Chord Brg = N 12°48'00"E
- CURVE #4**
Δ = 12°45'00"
R = 1877.08'
L = 417.71'
Ch = 416.84'
Chord Brg = S 12°48'00"W
- CURVE #5**
Δ = 7°58'24"
R = 1617.48'
L = 225.09'
Ch = 224.91'
Chord Brg = N 23°09'38"E
- CURVE #6**
Δ = 11°59'09"
R = 1551.48'
L = 324.56'
Ch = 323.97'
Chord Brg = S 25°10'05"W

113259
Recorded JUN 15 1984 AT 2:31 PM
Holmes Co. Ohio Fees: 43.20
Plat Vol 11 Pg 7 Recorder: Richard Shaver

DEED VOL. 223 PAGE 965
36x24x5 = 43.20

MAP OFFICE COPY