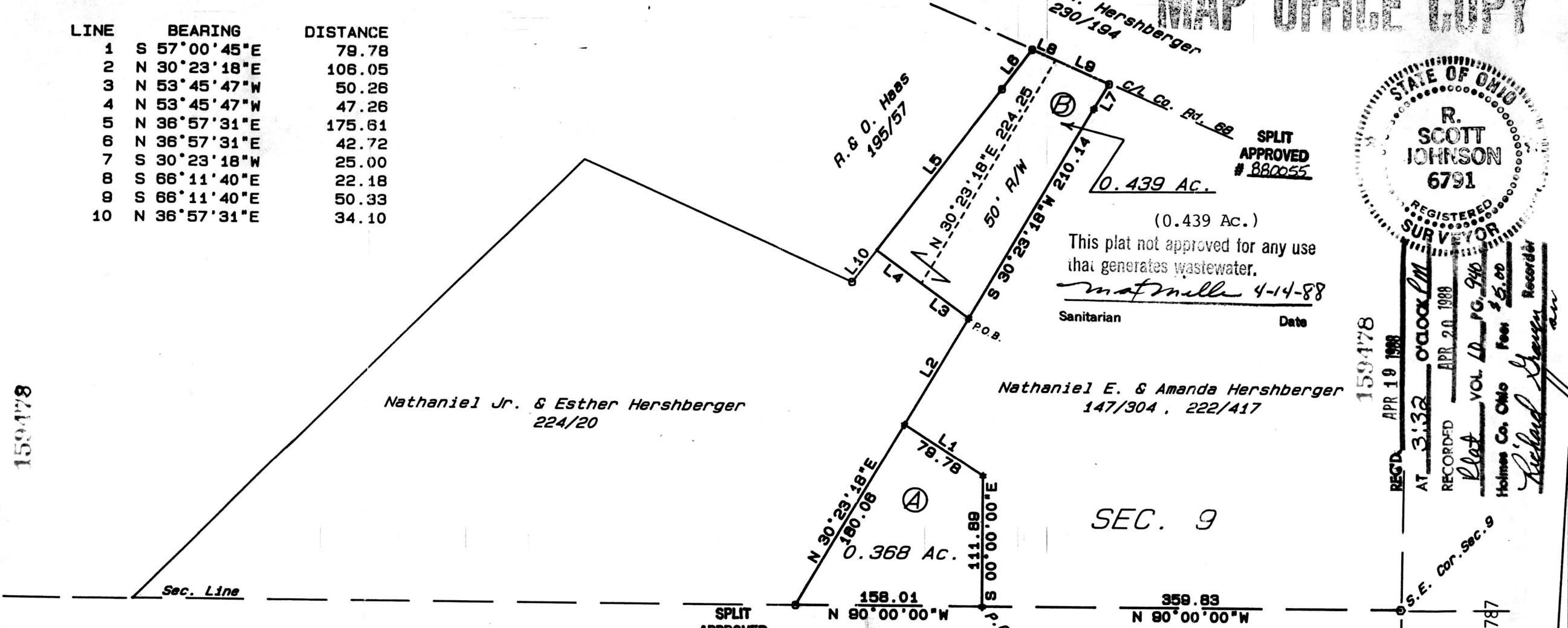


Research Basis:  
 Deeds- 222/417 224/20 195/57 230/194 147/304

MAP OFFICE COPY

LINE	BEARING	DISTANCE
1	S 57°00'45"E	79.78
2	N 30°23'18"E	106.05
3	N 53°45'47"W	50.26
4	N 53°45'47"W	47.26
5	N 36°57'31"E	175.61
6	N 36°57'31"E	42.72
7	S 30°23'18"W	25.00
8	S 66°11'40"E	22.18
9	S 66°11'40"E	50.33
10	N 36°57'31"E	34.10

159478



Nathaniel Jr. & Esther Hershberger  
224/20

Nathaniel E. & Amanda Hershberger  
147/304, 222/417

SPLIT APPROVED # 880055  
 (0.439 Ac.)  
 This plat not approved for any use that generates wastewater.  
*mat mill* 4-14-88  
 Sanitarian Date

SPLIT APPROVED # 880054  
 (0.368 Ac.)  
 This plat not approved for any use that generates wastewater.  
*mat mill* 4-14-88  
 Sanitarian Date



159478  
 REC'D APR 19 1988  
 AT 3:32 O'clock PM  
 RECORDED APR 20 1988  
 Plat VOL 10 PG. 940  
 Holmes Co. Ohio Fee \$5.00  
*Richard Brown* Recorder

BOUNDARY SURVEY

FOR  
 Nathaniel E. Hershberger

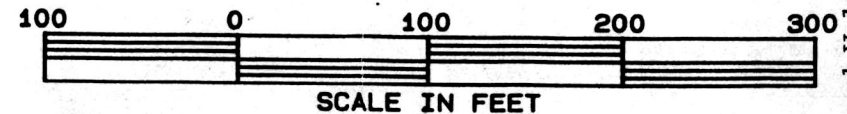
IN  
 Sec. 9 R-6W T8N, Mechanic Twp., Holmes Co.  
 Ohio

July 14, 1987

SEC. 9

SEC. 12

\* = Set 3/4"x30" ReBar @ Alum. Cap  
 o = Recovered Steel Pipe



*R. Scott Johnson*

R.P.S. 6791

Prepared By  
**G.A. STEWART INC.**  
 450 S. 4th Street (614) 622-2783  
 COSHOCTON, OHIO 43812

Deed Vol. 238 Pgs. 784 & 787

Bearings from Deed 224/20