

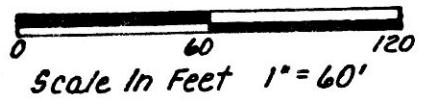
HARDY TOWNSHIP
HOLMES COUNTY, OHIO
LOT 8, 1ST QTR., T-9N, R-7W



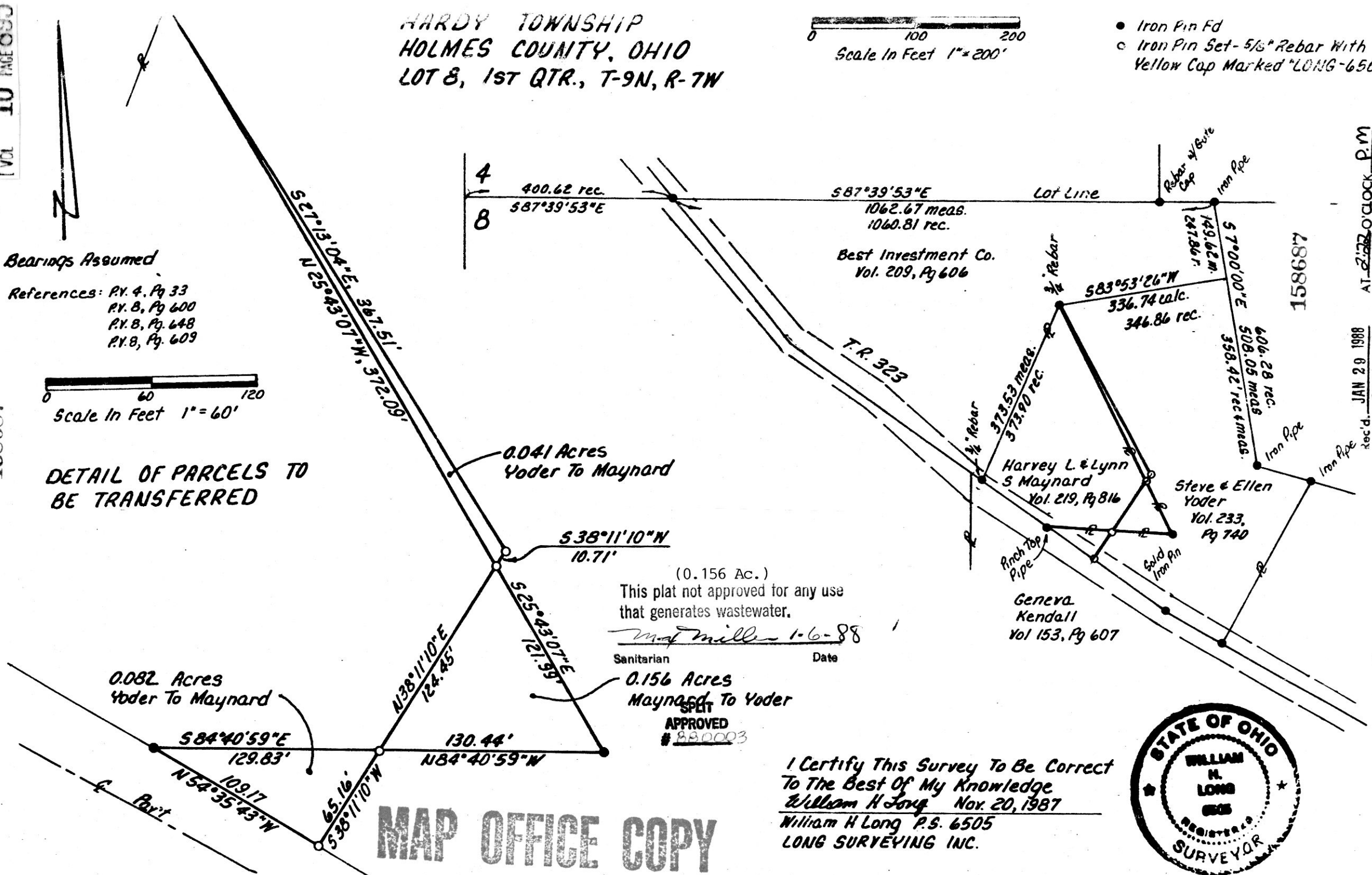
- Iron Pin Fd
- Iron Pin Set- 5/8" Rebar With Yellow Cap Marked "LONG-6505"

Bearings Assumed

- References: P.V. 4, Pg 33
P.V. 8, Pg 600
P.V. 8, Pg 648
P.V. 8, Pg 609



DETAIL OF PARCELS TO BE TRANSFERRED



158687

AT 2:20 O'CLOCK P.M.
JAN 20 1988
Recorded FEB 1 1988
Holmes Co. Ohio Fee: 5.00
Pg. 295
Revised Survey

Deed Vol. 237 Page 911

MAP OFFICE COPY

I Certify This Survey To Be Correct
To The Best Of My Knowledge
William H Long Nov. 20, 1987
William H Long P.S. 6505
LONG SURVEYING INC.

