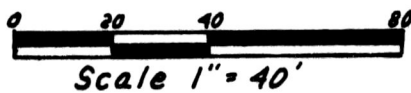


VILLAGE OF NASHVILLE
HOLMES COUNTY, OHIO
WASHINGTON TOWNSHIP
S.E. QTR., SEC. 13, T-19N, R-15W

Resurvey Of Lots 112, 113, 44, & A Split Of Lot 43

References: Orig Town Plat - D.V. 1, Pg 318
Castell's Add'n - P.V. 1, Pg 143
Deed Vol. 28, Pg. 284
Deed Vol. 29, Pg 87



- Stone Found
- Iron Pin Found
- Iron Pin Set - 5/8" Re-Bar With Yellow Cap Marked "LONG 6505"

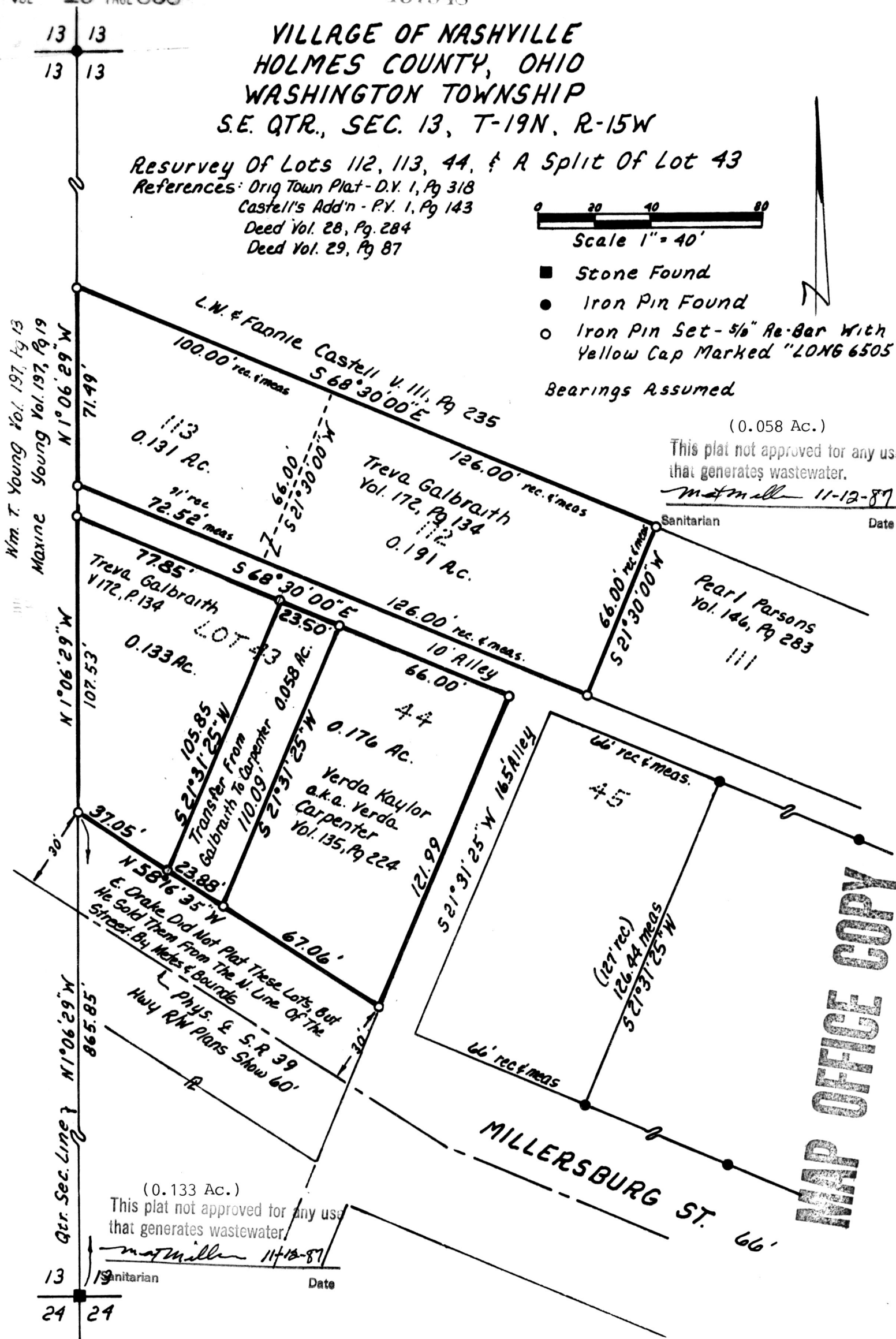
Bearings Assumed

(0.058 Ac.)

This plat not approved for any use that generates wastewater.

Mat Miller 11-12-87
Sanitarian Date

Wm. T. Young Vol. 197, Pg 13
Maxine Young Vol. 197, Pg 19



(0.133 Ac.)
This plat not approved for any use that generates wastewater.

Mat Miller 11-12-87
Sanitarian Date

MAP OFFICE COPY

I Certify This Survey To Be Correct
To The Best Of My Knowledge.

William H. Long Oct 21, 1987

William H. Long P.S. 6505
Long Surveying Inc.
13301 T.R. 503
Big Prairie, Ohio 44611

157948

Deed Vol. 237 Pages 179 & 181



Rec'd. NOV 19 1987

Recorded NOV 20 1987

Plat Vol. 10

AT 1:29 O'CLOCK Pm

Holmes Co. Ohio Fee 5.00

Pg. 858 Recorder *Richard*