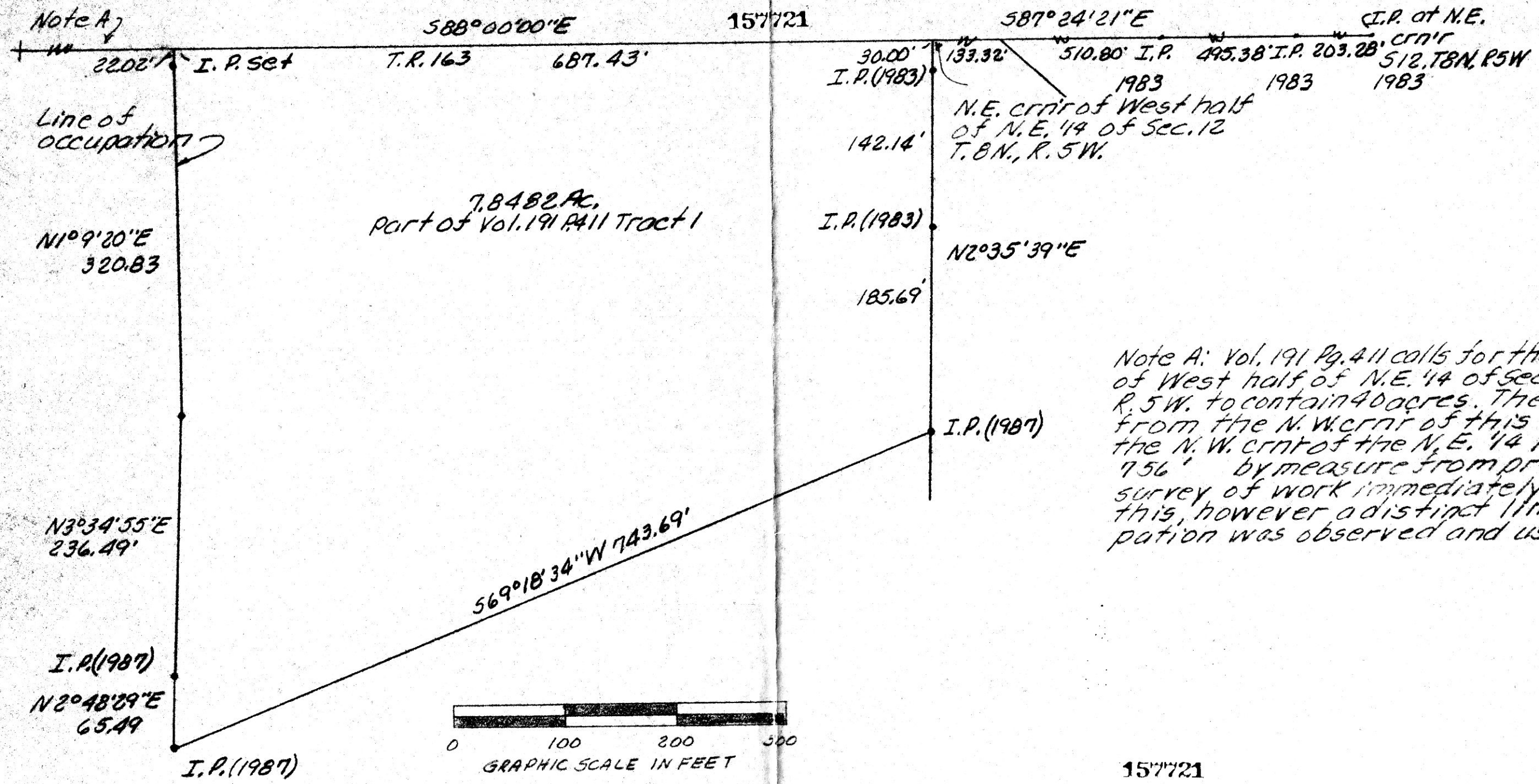


NORTH



Note A: Vol. 191 Pg. 411 calls for the East half of West half of N.E. 1/4 of Sec. 12, T.8N., R.5W. to contain 40 acres. The distance from the N.W. crnr of this tract to the N.W. crnr of the N.E. 1/4 is about 756' by measure from previous survey of work immediately East of this, however a distinct line of occupation was observed and used.

PLAT OF A SURVEY FOR
 ADAM N. YODER
 Grantor
 Known as part of the
 West 1/2 of N.E. 1/4 of
 Sec. 12, T.8N., R.5W., of
 Clark Twp., Hol. Co., Ohio
 Robert L. Kasner P.S. 5193
 P.E. 28320
 10/03/87

Rec'd. OCT 29 1987 AT 1:43 O'clock P.m.
 Recorded OCT 30 1987 Holmes Co. Ohio Fee: 8.50
 Plat Vol. 10 Pg. 846 Recorder Richard Graven
 11x17x5 p.mills



157721

Deed Vol. 236 Page 901

MAP OFFICE COPY