

(0.351 Ac.)

157623

This plat not approved for any use that generates wastewater.

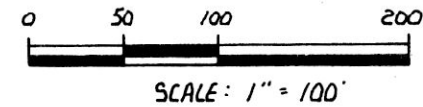
mat miller 6-25-87

Sanitarian Date

SPLIT APPROVED # 870145



HARDY TOWNSHIP
S.E. QTR. SEC. 11 T-9N: R-7W
S.W. QTR. FRAC. SEC. 15 T-9N: R-6W
HOLMES COUNTY, OHIO



- IRON PIN FD.
- 24" WALNUT TREE
- △ SPIKE SET
- 5/8" RE-BAR WITH I.D. CAP SET

REFERENCES:

PLAT VOL. 5 PAGE 106
PLAT VOL. 4 PAGE 111
PLAT VOL. 4 PAGE 154
PLAT VOL. 4 PAGE 118
VARIOUS DEEDS AS SHOWN

(A) EASTLAND DEVELOPMENT COMPANY, INC.
DEED VOL. 158 PAGE 482

NOTE: TRACT I OF DEED VOL 158 PAGE 482 CONTAINS 68.113 ACRES, FROM THIS TRACT EASTLAND DEVELOPMENT CO., INC. HAS SOLD SEVERAL SMALL TRACTS. THIS STRIP OF LAND WAS NEVER TRANSFERRED FROM THE ORIGINAL 68.113 ACRE TRACT.

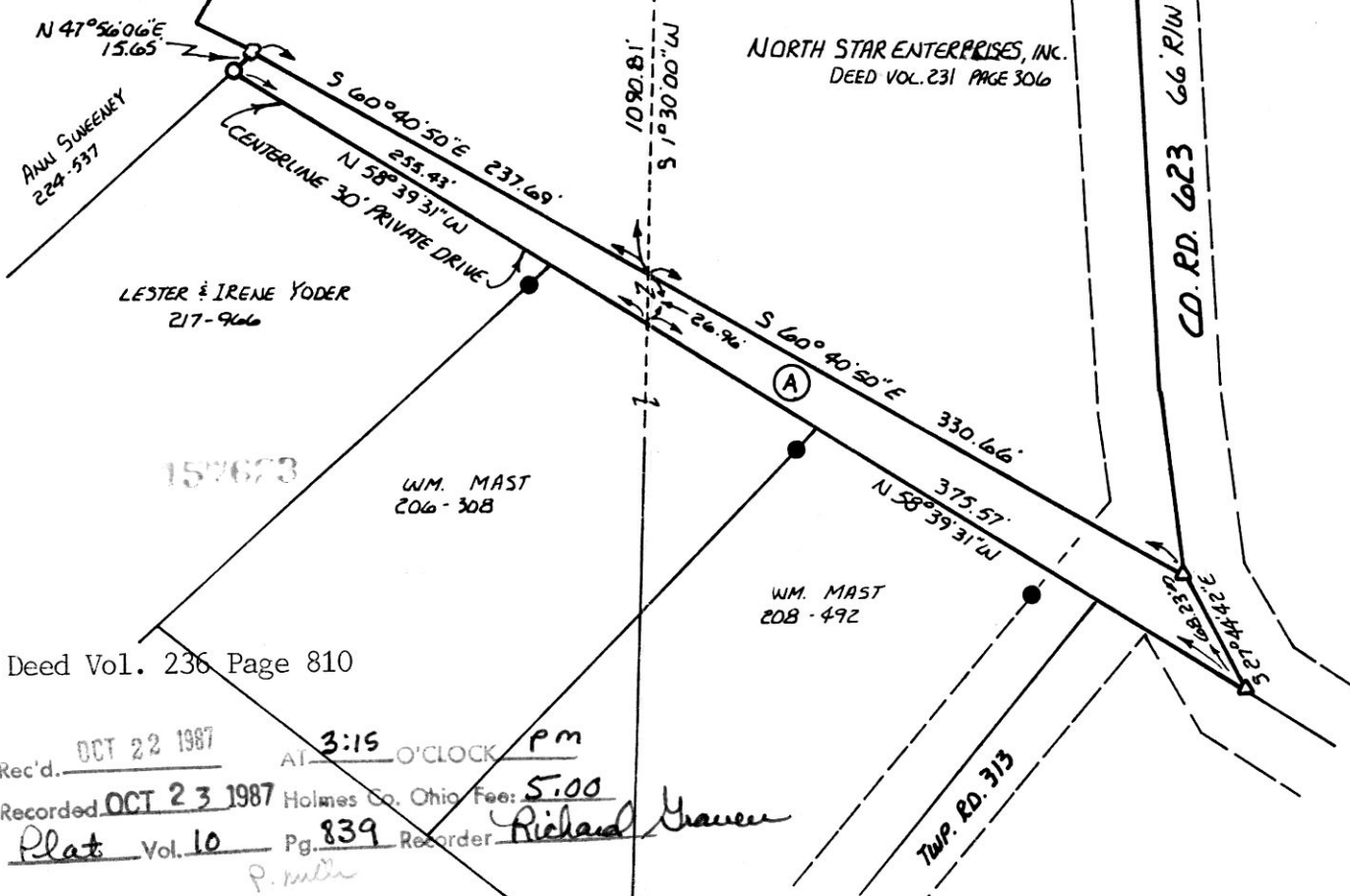
S.E. QTR. SECTION 11 - 0.109 ACRES
S.W. QTR. SECTION 15 - 0.242 ACRES
0.351 TOTAL ACRES

I CERTIFY THIS SURVEY TO BE CORRECT TO THE BEST OF MY KNOWLEDGE.

Donald C Baker
DONALD C. BAKER P.S. 6938
4321 T.R. 252
GLENMONT OH.

JUNE 3, 1987

VOL 10 PAGE 839



Deed Vol. 236 Page 810

Rec'd. OCT 22 1987 AT 3:15 O'CLOCK Pm
Recorded OCT 23 1987 Holmes Co. Ohio Fee: 5.00
Plat Vol. 10 Pg. 839 Recorder *Richard Yauer*

MAP OFFICE COPY