

PAINT TOWNSHIP  
HOLMES COUNTY, OHIO  
LOT 10, 4TH QTR., T-10N, R-5W

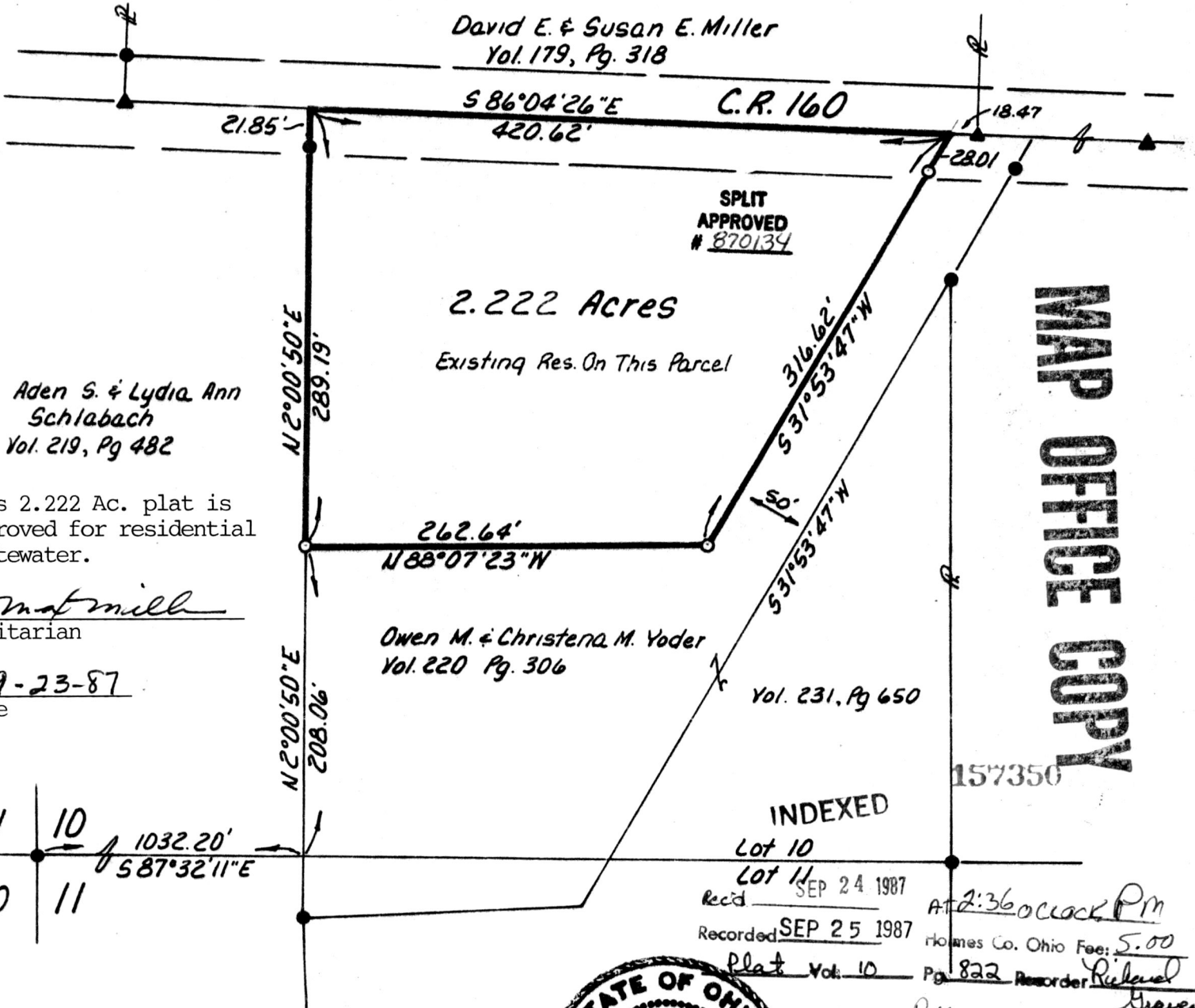
157350

Bearings From P.V. 10, Pg 575

- Iron Pin Found
- ▲ R.R. Spike Found
- Iron Pin Set - 5/8" Rebar With Yellow Caps Marked "LONG-6505"



Reference P.V. 10, Pg 575  
P.V. 5, Pg 102



Aden S. & Lydia Ann  
Schlabach  
Vol. 219, Pg 482

This 2.222 Ac. plat is approved for residential wastewater.

*Mat Mill*  
Sanitarian

9-23-87  
Date

Owen M. & Christena M. Yoder  
Vol. 220 Pg. 306

Vol. 231, Pg 650

INDEXED

Lot 10

Lot 11

rec'd SEP 24 1987

Recorded SEP 25 1987

Plat Vol. 10

At 2:36 o'clock PM

Holmes Co. Ohio Fee: 5.00

Pg 822 Recorder *Richard*

*Traven*

Deed Vol. 236 Pg 528

I Certify This Survey To Be Correct  
To The Best Of My Knowledge  
*William H. Long* Aug 26, 1987  
William H. Long P.V. 6505  
13301 T.R. 503  
Big Prairie, Ohio 44611



MAP OFFICE COPY