

PRAIRIE TOWNSHIP  
 HOLMES COUNTY, OHIO  
 NE QTR. SECTION 30, T-14N, R-13W

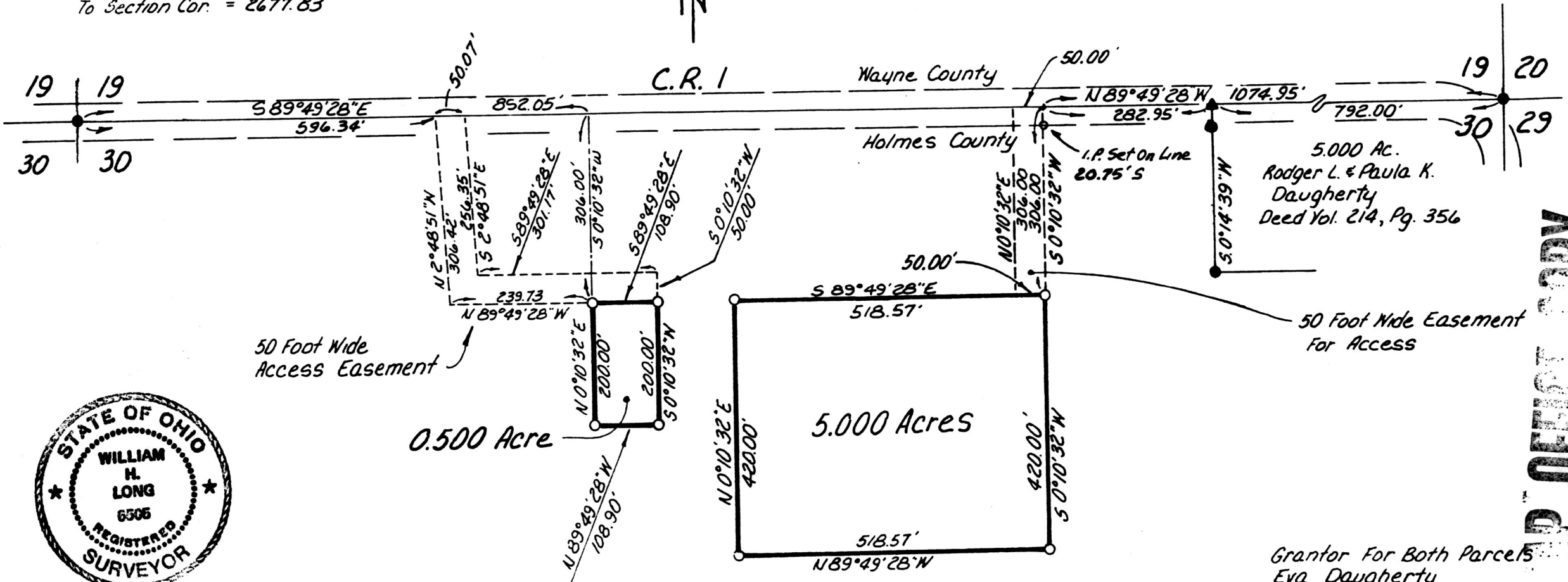
Note: Total Length From Qtr. Cor.  
 To Section Cor. = 2677.83'

157040



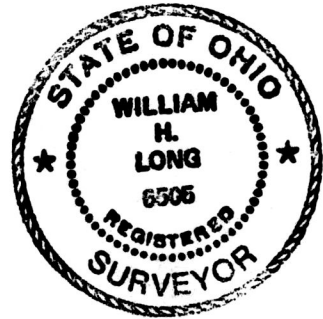
Reference Plat Vol. 8, Pg. 789  
 Bearings From Same

- ▲ R.R. Spike Found
- Iron Pin Found
- Iron Pin Set - 5/8" Bar With Yellow Cap Marked "LONG-6505"



5.000 Ac.  
 Rodger L. & Paula K.  
 Daugherty  
 Deed Vol. 214, Pg. 356

50 Foot Wide Easement  
 For Access



I Certify This Plat To Be Correct To The Best  
 Of My Knowledge

William H. Long Nov. 5, 1984  
 William H. Long R.S. 6505  
 13301 T.R. 503  
 Big Prairie, Ohio 44611

Revised Location Of Access Esmt.  
 To 5 Ac. 3-12-87 WHL

157040

Deed Vol. 236 Page 250.

Rec'd. AUG 20 1987 AT 4:02 O'CLOCK PM  
 Recorded AUG 21 1987 Holmes Co. Ohio Fee: \$5.00  
 Plat Vol. 10 Pg. 803 Recorder Richard Gruen  
 Eva Daugherty

OFFICE COPY

VOL 10 PAGE 803