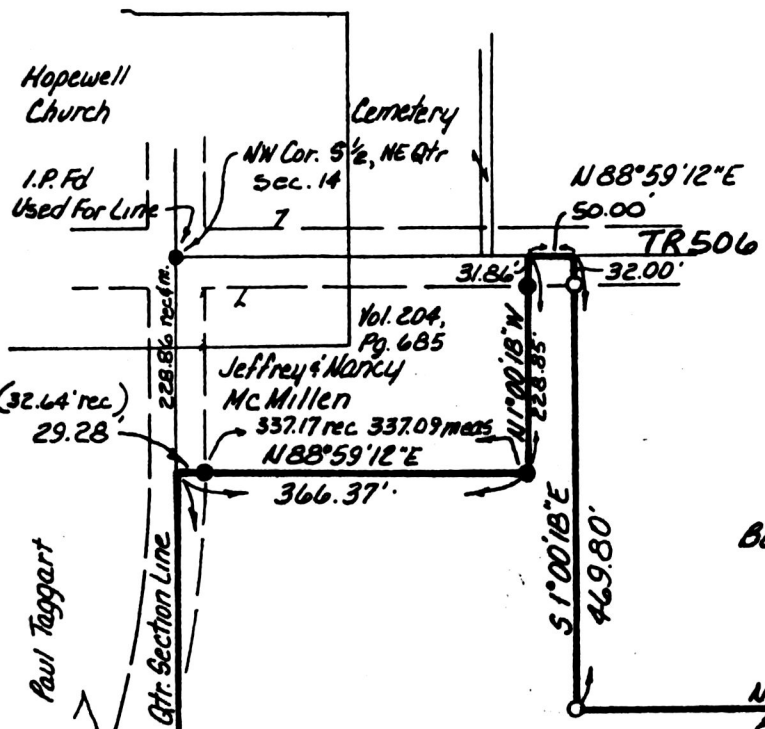


RIPLEY TOWNSHIP
HOLMES COUNTY, OHIO
NORTHEAST QUARTER, SECTION 14
T-17N, R-14W



- Iron Pin Found
- Iron Pin Set - 5/8" Rebar
w/ Yellow Cap Marked "LONG-6505"

References:
Plat Vol. 5, Pg. 40
Plat Vol. 8, Pg. 372
Deeds As Shown



156504

Deed Vol. 235 Pages 730 & 732.

Bearings Assumed

Rec'd. JUL 1 1987

AT 12:05 O'CLOCK P.M.

Recorded JUL 2 1987

Holmes Co. Ohio Fee: 5.00

Plat Vol. 10

Pg. 768 Recorder Richard Heaven

Jan Matthe

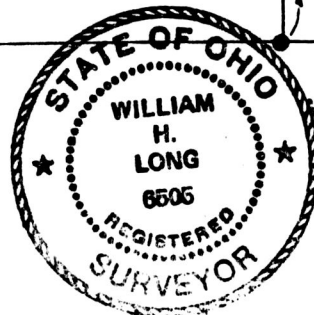
N89°22'17"E
848.07'

17.246 Acres

Grantor: Marie E. Acker
Part Of Vol. 172 Pg 149

Glenn M. & Oda V. Mutchler
Vol. 174, Pg 48

MAP OFFICE COPY



I Certify This Survey To Be Correct
To The Best Of My Knowledge.

William H. Long Oct. 23, 1986

William H. Long, R.S. 6505

13301 T.R. 503

Big Prairie, Ohio 44611