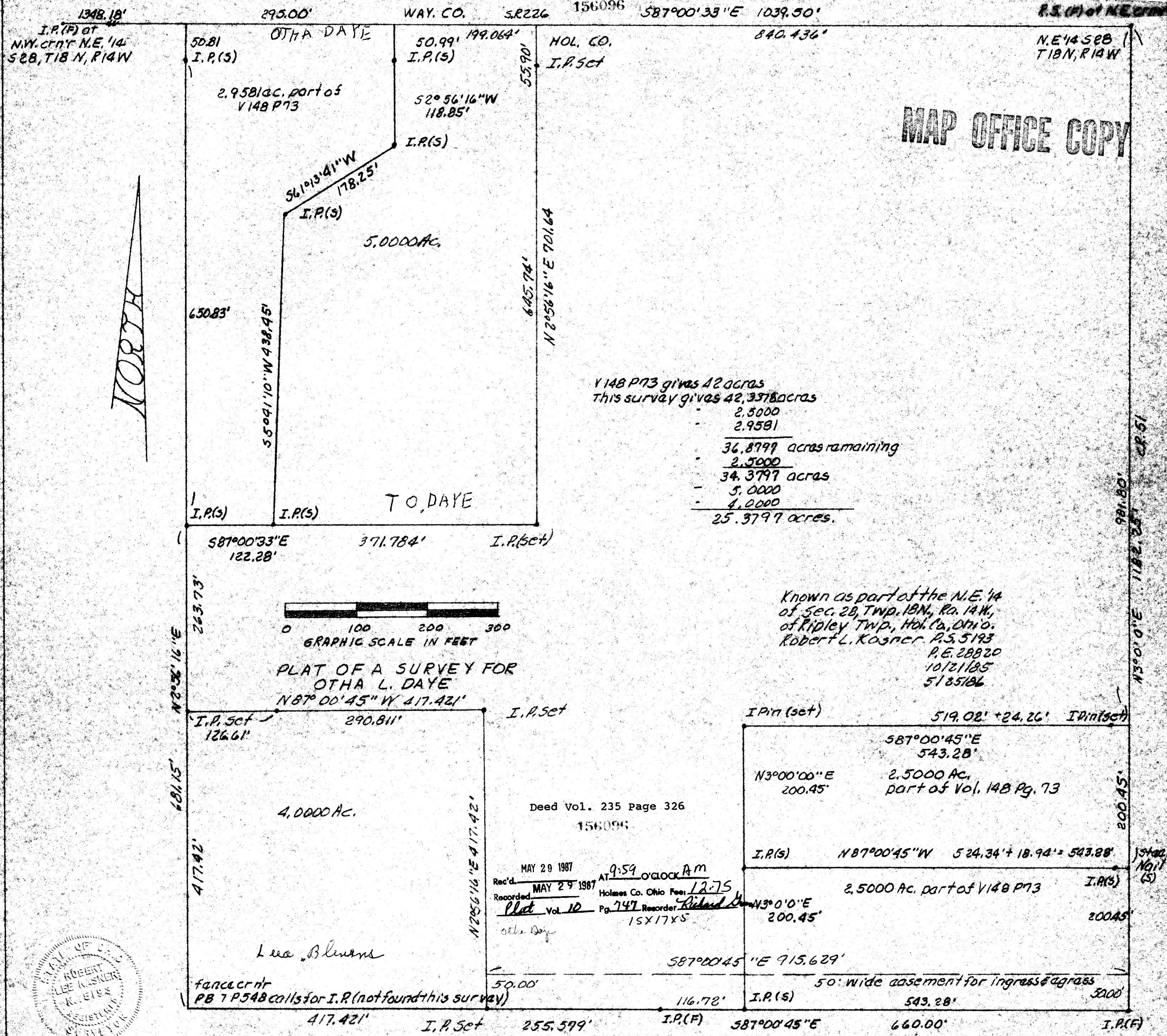


P.S. (P) of N.E. 1/4

N.E. 1/4 Sec 28 T18N, R14W

MAP OFFICE COPY

NORTH



V148 P73 gives 42 acres
 This survey gives 42,358 acres
 - 2,5000
 - 2,9581

 36,8799 acres remaining
 - 2,5000
 34,3797 acres
 - 5,0000
 - 4,0000

 25,3797 acres.

