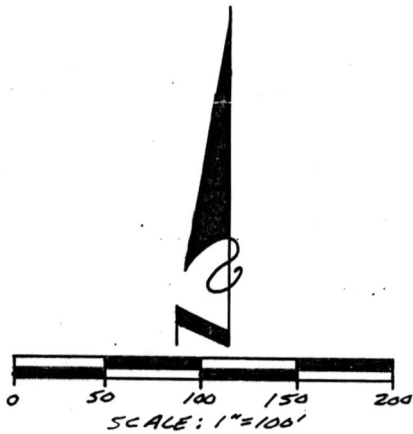
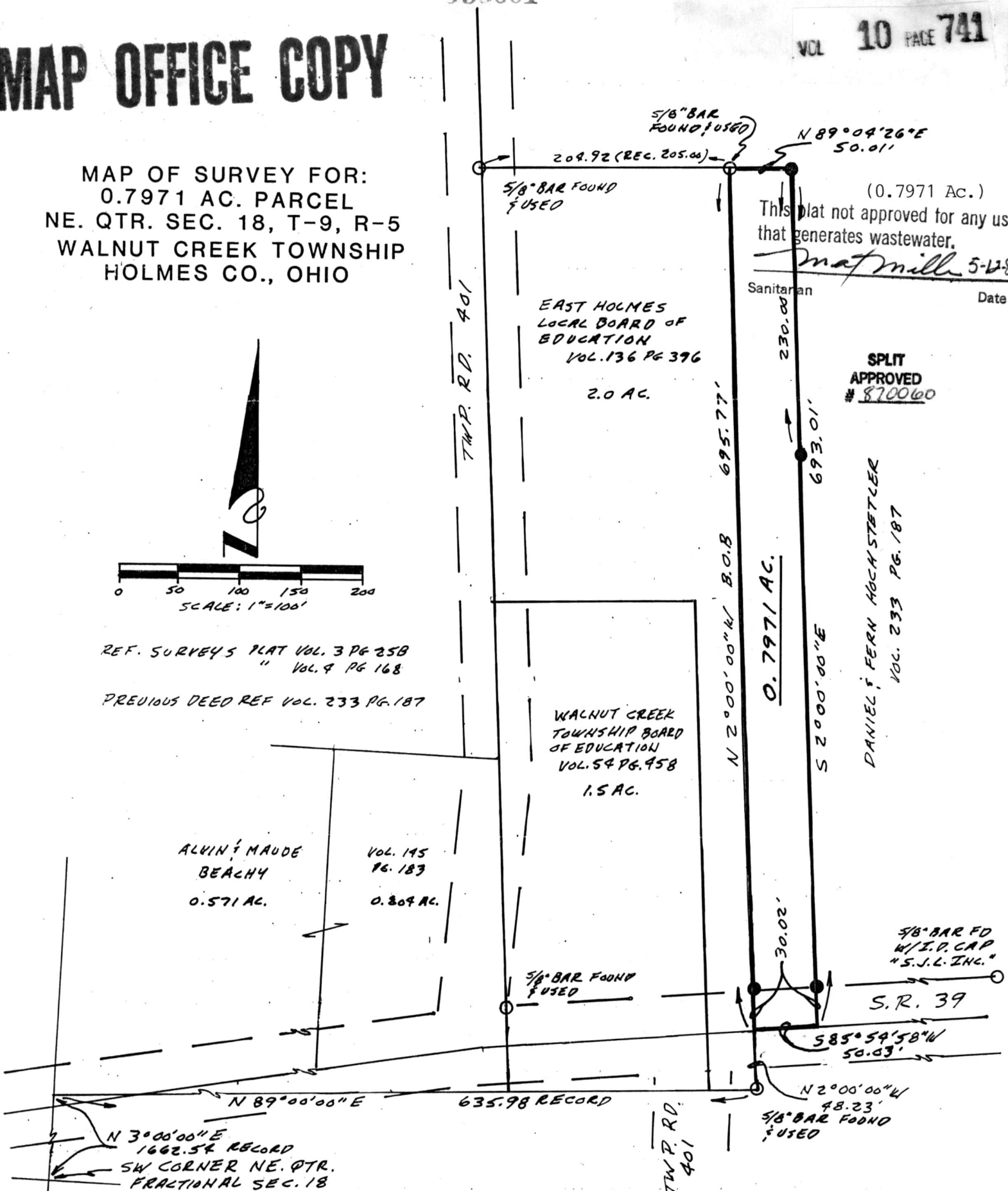


MAP OFFICE COPY

MAP OF SURVEY FOR:
0.7971 AC. PARCEL
NE. QTR. SEC. 18, T-9, R-5
WALNUT CREEK TOWNSHIP
HOLMES CO., OHIO



REF. SURVEY'S PLAT VOL. 3 PG 25B
" VOL. 4 PG 168
PREVIOUS DEED REF VOL. 233 PG. 187



(0.7971 Ac.)
This plat not approved for any use that generates wastewater.
Mat mill 5-1-89
Date

SPLIT APPROVED # 870060

DANIEL & FERN HOCHSTETLER
VOL. 233 PG. 187

SURVEYOR'S CERTIFICATION- We hereby certify this plat was prepared from a survey made by the office of Poggemeyer Design Group, Inc., Engineers-Architects-Surveyors, and is correct to the best of my knowledge and belief.

All distances are in feet and decimals thereof. Bearings are based on an assumed meridian and are used for angular measurement only.

Any information or data on this drawing is not intended to be suitable for reuse by any person, firm or corporation or any others on extensions of this project or for any use on any other project. Any reuse without written verification and adaptation by the Engineer, Architect or Surveyor for the specific purpose intended will be at the users sole risk and without liability or legal exposure to the Engineer, Architect or Surveyor.



Deed Vol. 235 Pg. 205

156001
Rec'd. MAY 20 1987 At 12:30 O'CLOCK P.M.
Recorded MAY 21 1987 Holmes Co. Ohio Fee: 5.00
Plat Vol. 10 Pg. 741 Recorder Richard Krause



Portage Centre Building
P.O. Box 904 2098 Portage Road
Wooster, Ohio 44691
(216) 264-6776

DRAWN	DATE
RAP	1/29/87
CHECKED	DATE
APPROVED	DATE
REVISIONS	DATES

Robert A. Priest P.S.
Robert A. Priest P.S. No. 6924