

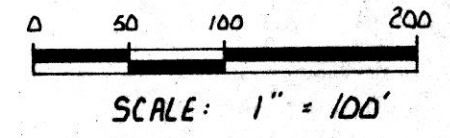
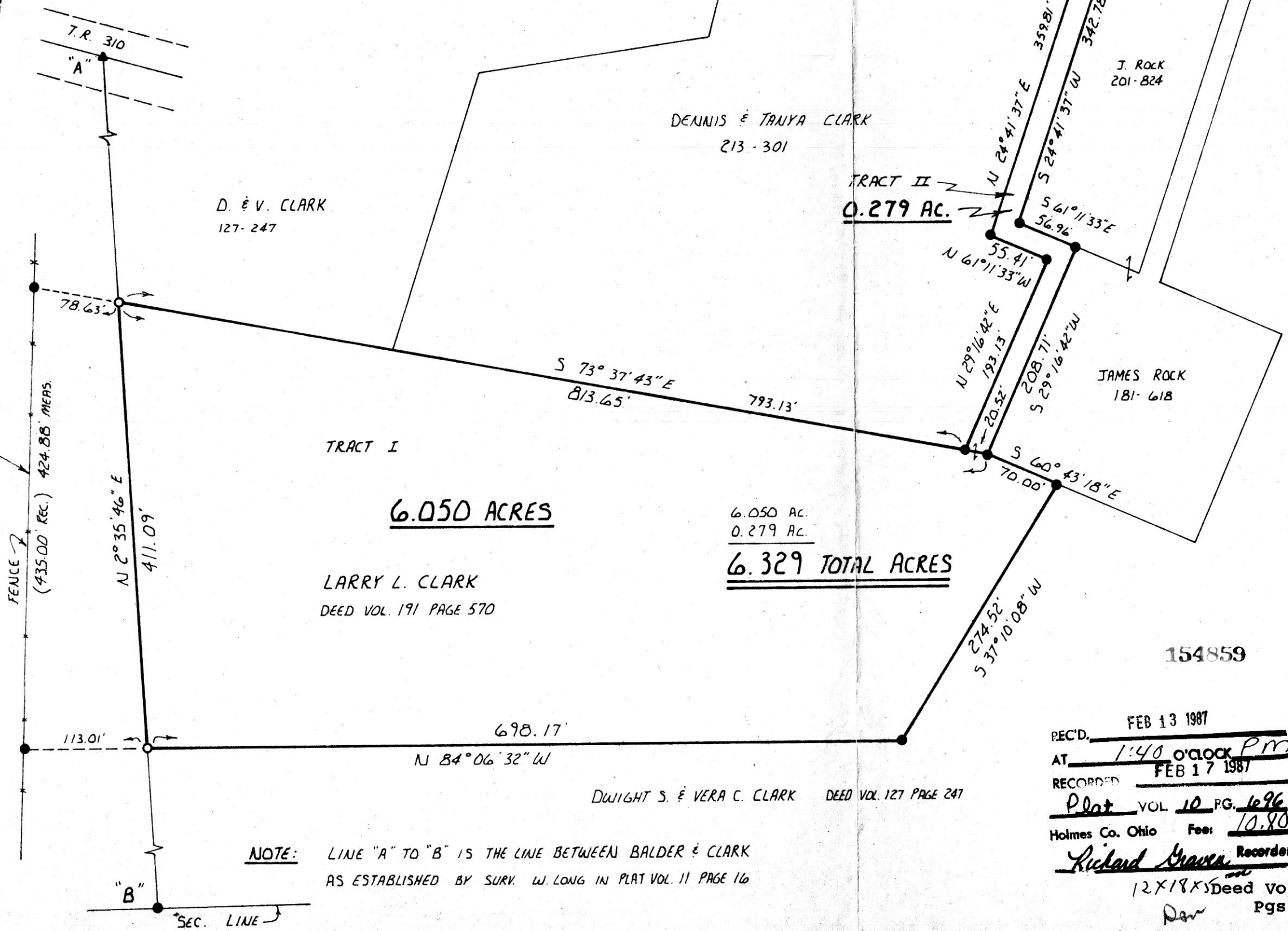
MAP OFFICE COPY

HARDY TOWNSHIP
S.W. QTR. SECTION 17
T-9N R-6W
HOLMES COUNTY, OHIO

154859

17 17
17 17

BALDER 224-576
FENCE USED FOR THE LINE BETWEEN BALDER & CLARK
BY C. PURDY IN PLAT VOL. 7 PAGE 501



- IRON PIN FOUND
- ▲ R.R. SPK. FOUND
- 5/8" RE-BAR WITH I.D. CAP SET

REFERENCES:

- DEED VOL. 191 PAGE 570
- DEED VOL. 127 PAGE 247
- PLAT VOL. 7 PAGE 501
- PLAT VOL. 7 PAGE 502
- PLAT VOL. 11 PAGE 16
- BEARINGS FROM P.V. 8 P. 760

NOTE: LINE "A" TO "B" IS THE LINE BETWEEN BALDER & CLARK AS ESTABLISHED BY SURV. W. LONG IN PLAT VOL. 11 PAGE 16

REC'D. FEB 13 1987
 AT 1:40 o'clock PM
 RECORDED FEB 17 1987
 Plat VOL. 10 PG. 696
 Holmes Co. Ohio Fee: 10.80
 Richard Graves Recorder

I CERTIFY THIS SURVEY TO BE CORRECT TO THE BEST OF MY KNOWLEDGE.
 Donald C. Baker
 DONALD C. BAKER P.S. 6938
 4321 T.R. 252
 GLENMONT OH.
 12X18X Deed Vol. 234
 Pgs. 237 & 240 FEB. 5, 1987