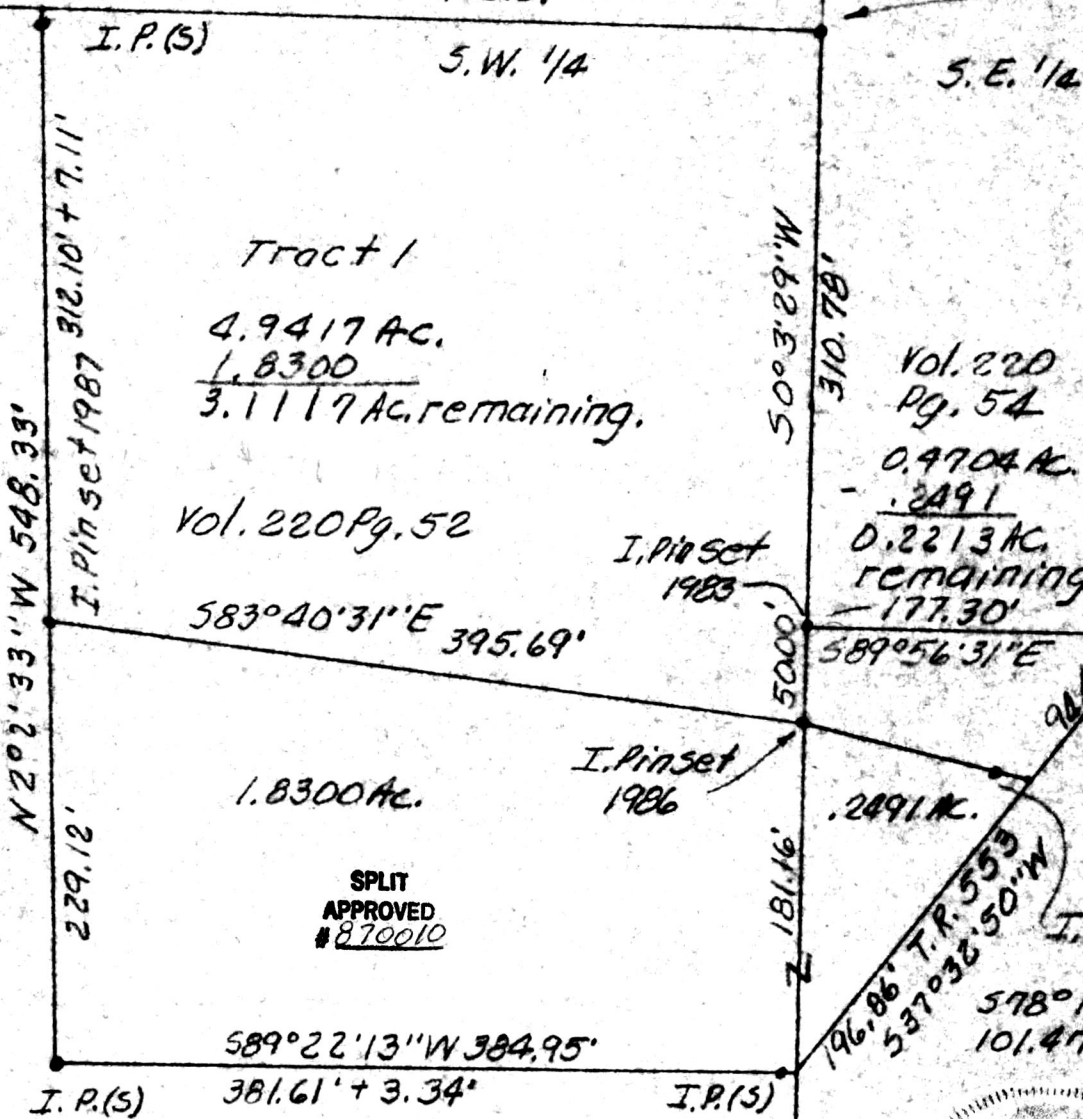


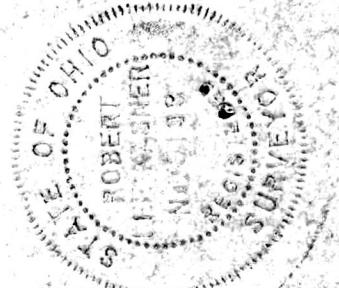
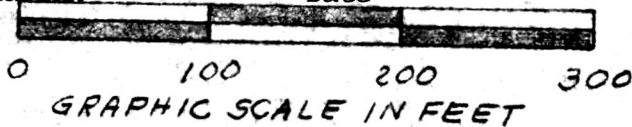
MAP OFFICE COPY

NW 1/4 of V205P834 (Calc.) N.W. 1/4 I.P.(S) at ctr S6, T13N, R13W
976.38' 589°44'34"E 405.01' Prairie TWP, Hol. Co., Ohio



This 1.8300 Ac. and .2491 Ac. plat is approved for residential wastewater.

Mat Miller 1-28-87
Sanitarian Date



P.K. Nail (S) on E. line
V205P834 at inter-
section T.R. 553 &
C.R. 329.

PLAT OF A SURVEY FOR
SLISIE YODER
Grantee

Known as part of the S.W. 1/4
S6, T13N, R13W of Prairie
TWP, Hol. Co., Ohio.
3/29/83 1/19/87

Robert L. Kasner P.S. 5193
P.E. 28820

REC'D FEB 5 1987 AT 11:17 O'CLOCK AM