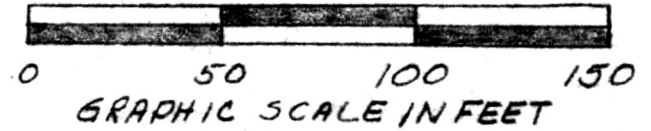


MAP OFFICE COPY

Rail road
Spike Fd. 1986 } N. Line Fract¹ Sec. 14, N.E. cor^r
T.R. 574 } 91.24' } Twp. 13 N., Ra. 13 W. of
 } } Prairie Twp. Hol. Co. Ohio

589°00'00" West
2,662.70' Vol. 211 Pg. 238

I. Pin set
1986 }
0.3812
Acres
part of
Vol. 216
Pg. 186

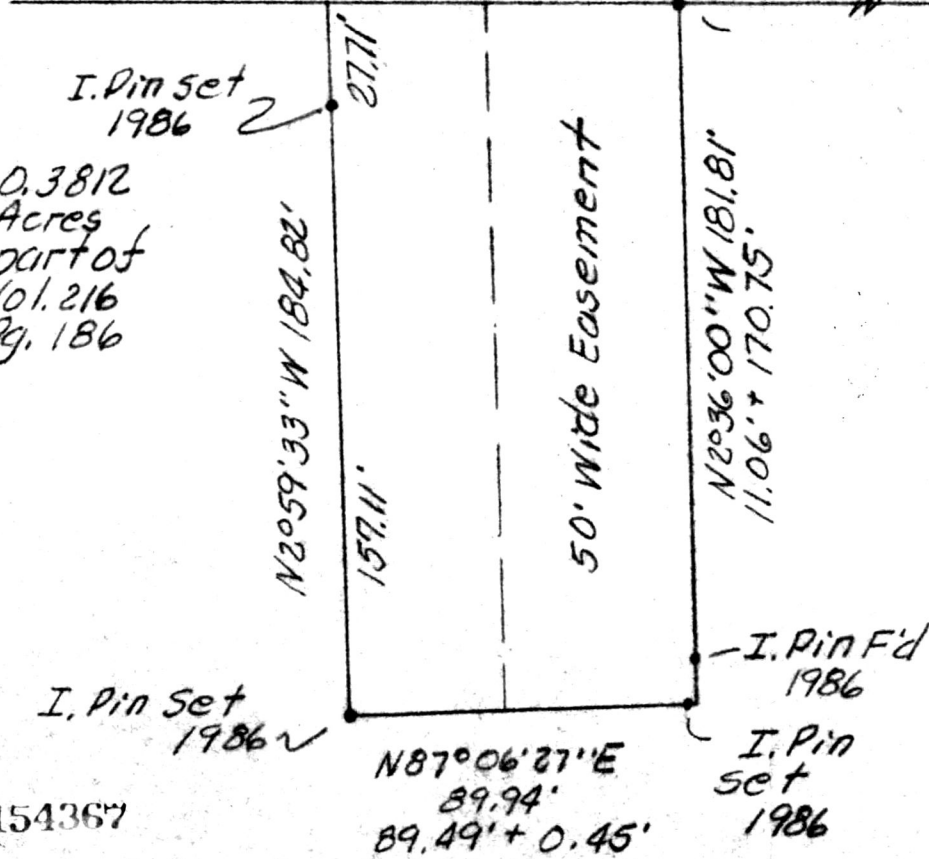


PLAT OF A SURVEY FOR
WAYNE KLINE

Known as part of Fract¹
Sec. 14, Twp. 13 N., Ra. 13 W.,
of Prairie Twp., Hol. Co.,
Ohio.

Robert L. Kasner P.S. 5193
P.E. 28820
12/15/86

NORTH



N87°06'27\"E
89.94'
89.49' + 0.45'

I. Pin F'd
1986
I. Pin
set
1986

SPLIT
APPROVED
800106

(0.3812 acre)

Deed Vol. 233 Pg. 836

154367



Rec'd. Dec. 29, 1986 AT 4:10 O'CLOCK PM

Recorded Dec. 30, 1986 Holmes Co. Ohio Fee: 5.00 This plat not approved for any use

Plat Vol. 10 Pg. 647 Recorder Richard Paul that generates wastewater.

Paul Tracy Miller 12-18-86

Sanitari in

Date