

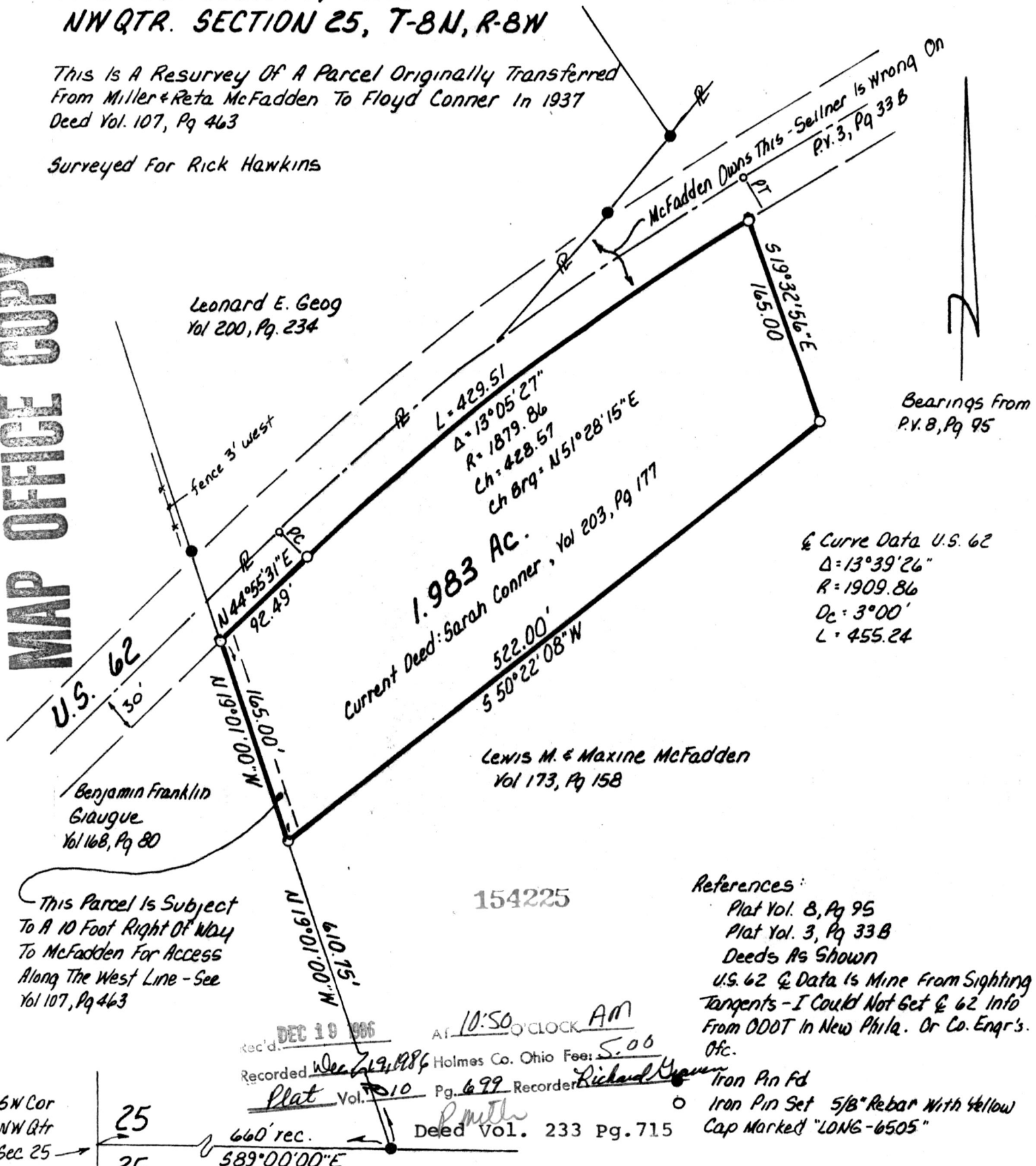
**RICHLAND TOWNSHIP
HOLMES COUNTY, OHIO
NW QTR. SECTION 25, T-8N, R-8W**

154225

This is A Resurvey Of A Parcel Originally Transferred From Miller & Reta McFadden To Floyd Conner In 1937 Deed Vol. 107, Pg 463

Surveyed For Rick Hawkins

MAP OFFICE COPY



Leonard E. Geog
Vol 200, Pg. 234

Bearings from
P.V. 8, Pg 95

Curve Data U.S. 62
Δ=13°39'26\"
R=1909.86
Dc=3°00'
L=455.24

1.983 Ac.
Current Deed: Sarah Conner, Vol 203, Pg 177

Lewis M. & Maxine McFadden
Vol 173, Pg 158

154225

- References:
- Plat Vol. 8, Pg 95
 - Plat Vol. 3, Pg 33B
 - Deeds As Shown
 - U.S. 62 Curve Data Is Mine From Sighting Tangents - I Could Not Get Curve Data From ODOT In New Phila. Or Co. Engr's Ofc.
 - Iron Pin Fd
 - Iron Pin Set 5/8" Rebar With Yellow Cap Marked "LONG-6505"

REC'D. DEC 19 1986 AT 10:50 O'CLOCK AM
Recorded Dec 29, 1986 Holmes Co. Ohio Fee: 5.00
Plat Vol. 10 Pg. 699 Recorder: Richard Hyman
Deed Vol. 233 Pg. 715

This Parcel Is Subject To A 10 Foot Right Of Way To McFadden For Access Along The West Line - See Vol 107, Pg 463

SW Cor
NW Qtr
Sec 25

I Certify This Survey To Be Correct To The Best Of My Knowledge
William H. Long Sept 11, 1986
William H. Long R.S. 6505
13301 T.R. 503
Big Prairie, Ohio 44611