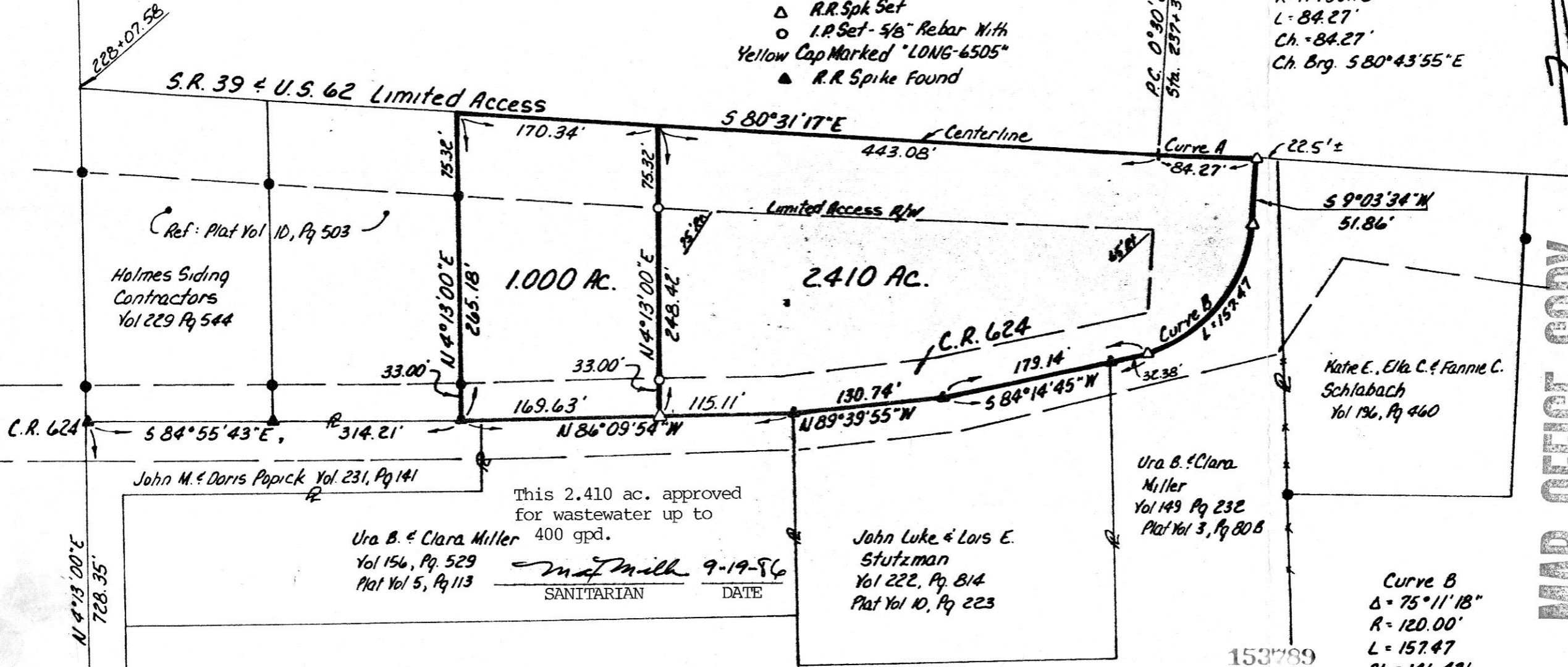


HARDY TOWNSHIP
HOLMES COUNTY, OHIO
SE QTR., SEC. 14, T-9N, R-6W

0 100 200 153789
Scale: 1" = 100'
Bearings From P.V. 4, Pg 3
● I.P. Found
■ Stone Fd.
△ R.R. Spk Set
○ I.P. Set - 5/8" Rebar With Yellow Cap Marked "LONG-6505"
▲ R.R. Spike Found

Curve A
Δ = 0°25'16"
R = 11459.16'
L = 84.27'
Ch. = 84.27'
Ch. Brg. = 580°43'55"E



MAP OFFICE COPY

This 2.410 ac. approved for wastewater up to 400 gpd.
Ura B. & Clara Miller
Vol 156, Pg. 529
Plat Vol 5, Pg 113
Mat Milk 9-19-86
SANITARIAN DATE

John Luke & Lois E. Stutzman
Vol 222, Pg. 814
Plat Vol 10, Pg 223

Ura B. & Clara Miller
Vol 149 Pg 232
Plat Vol 3, Pg 808

Kate E., Elka C. & Fannie C. Schlabach
Vol 196, Pg 460

Curve B
Δ = 75°11'18"
R = 120.00'
L = 157.47
Ch. = 146.42'
Ch. Brg. = 546°39'05"W

I Certify This Survey To Be Correct To The Best Of My Knowledge
William H. Long Aug. 28, 1986
William H. Long R.S. 6505
13301 T.R. 503
Big Prairie, Ohio 44611

References: Plat Vol. 10, Pg 503
S.R. 39 R/W Plans
Other Plats & Deeds As Shown

Rec'd. NOV 17 1986 AT 9:51 O'CLOCK AM
Recorded Nov 17, 1986 Holmes Co. Ohio Fee: \$5.00
Plat Vol. 10 Pg. 650 Recorder Richard Gruen
Don Hadden