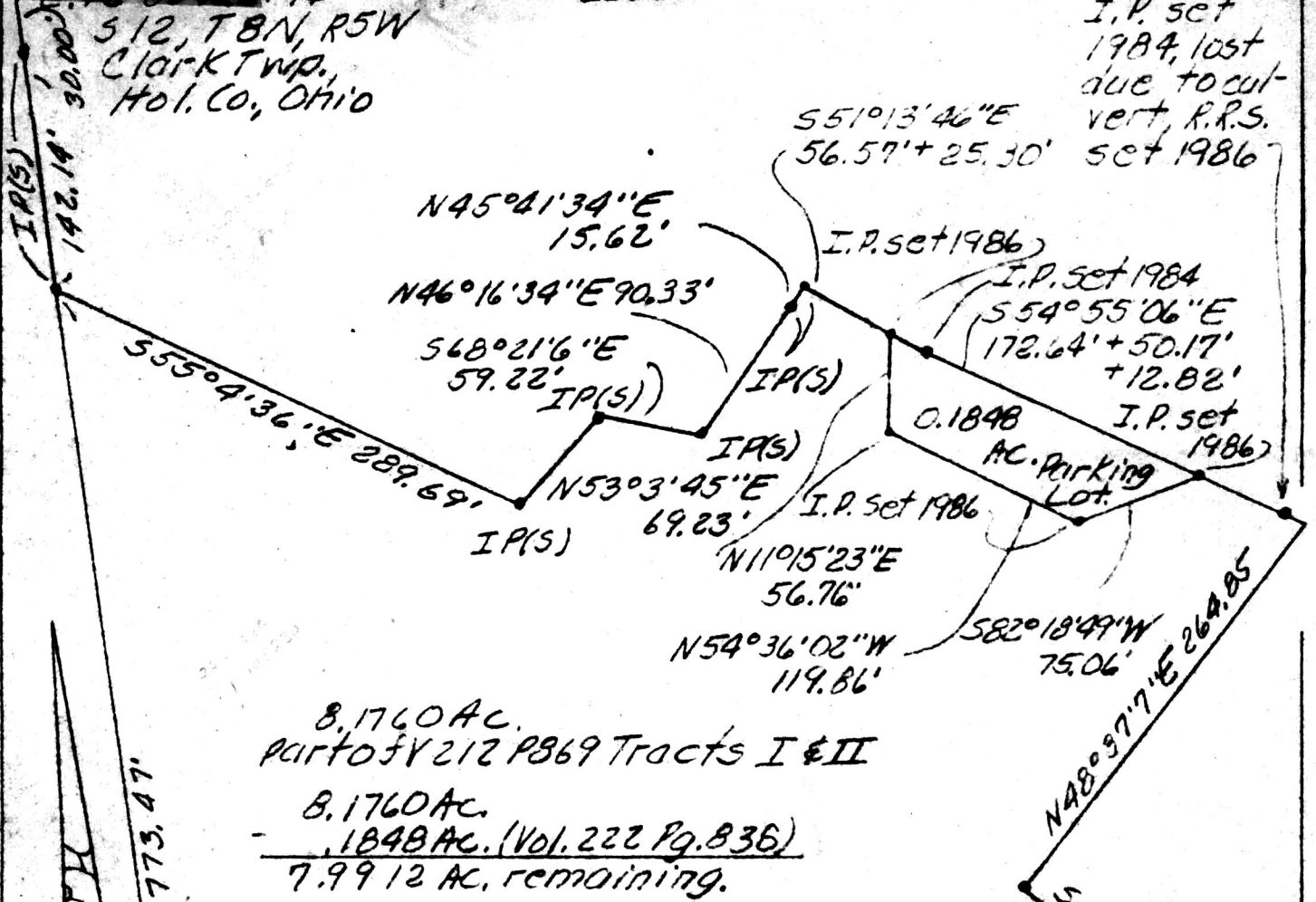


153539

NE 1/4
S 12, T 8 N, R 5 W
Clark Twp.,
Hol. Co., Ohio

I.P. set
1984, lost
due to cut-
vert R.R.S.
56.57' + 25.30' set 1986

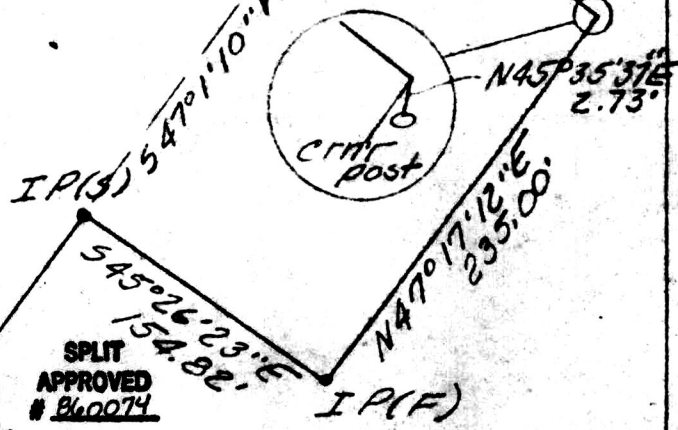


8.1760 AC.
part of V 212 P 869 Tracts I & II
8.1760 AC.
- 1.1848 AC. (Vol. 222 Pg. 836)
7.9912 AC. remaining.

NORTH
N 20°35'39\"/>

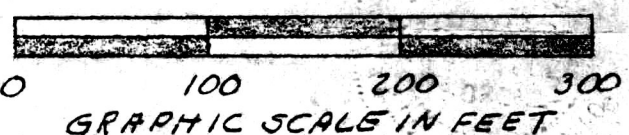
153539

REC'D. OCT 27 1986
AT 2:40 O'CLOCK PM
RECORDED OCT 28 1986
Plat VOL 10 PG. 634
Holmes Co. Ohio Fee: Fee \$5.00
Richard Graven Recorder
p mill Deed Vol 233
Page 69.



(0.1848 Acre)

This plat not approved for any use
tha. generates wastewater.
Mat mill 10-22-86
Sanitarian Date



PLAT OF A SURVEY FOR EMANUEL J. RABER

Known as part of NE 1/4
S 12, T 8 N, R 5 W of Clark
Twp., Hol. Co., Ohio.

Robert L. Kasner, P.S. 5193
P.E. 28820

11/31/84
1011186

MAP OFFICE COPY