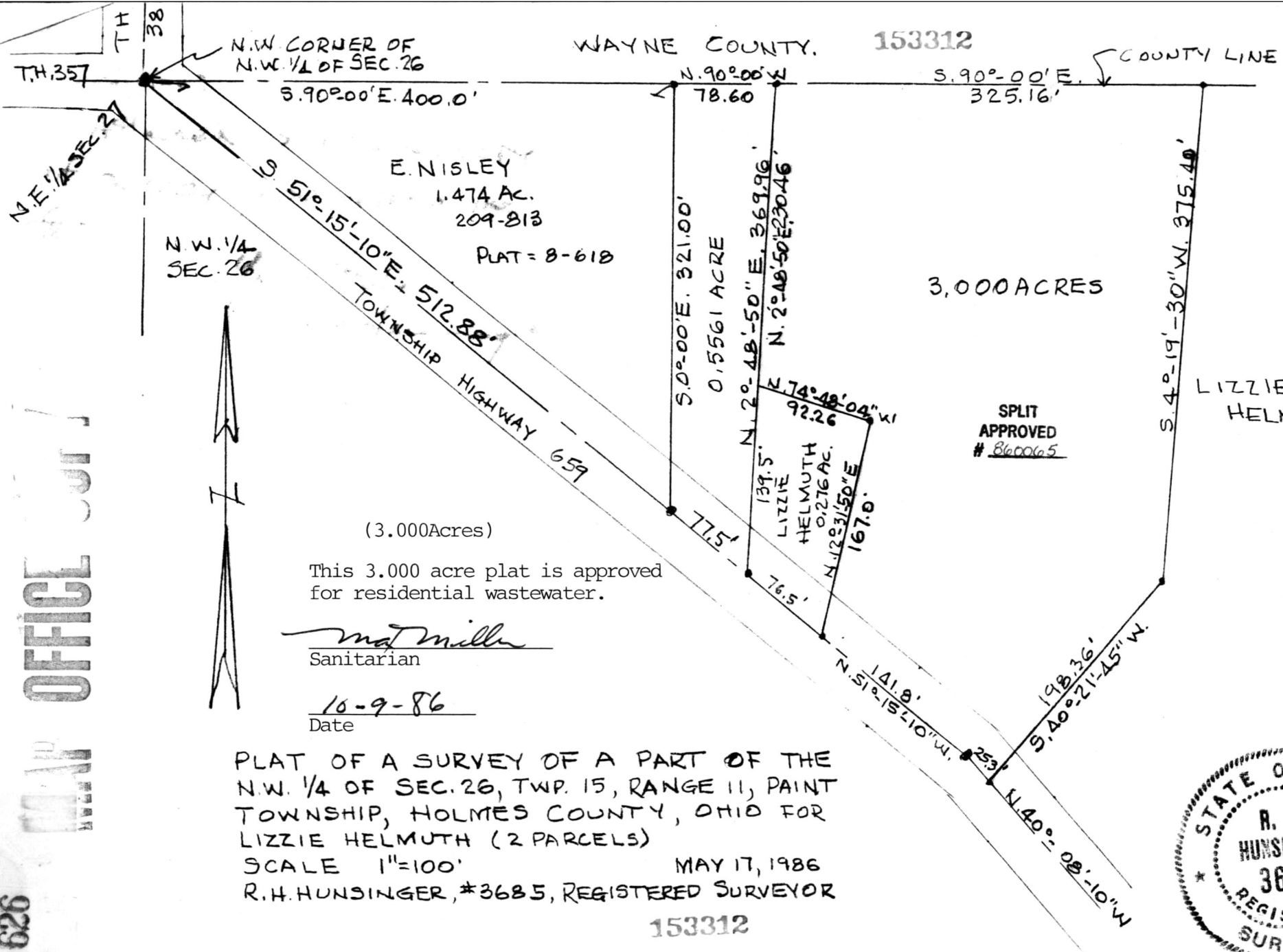


OFFICE



(3.000Acres)

This 3.000 acre plat is approved for residential wastewater.

*Mat Miller*  
Sanitarian

10-9-86  
Date

PLAT OF A SURVEY OF A PART OF THE N.W. 1/4 OF SEC. 26, TWP. 15, RANGE 11, PAINT TOWNSHIP, HOLMES COUNTY, OHIO FOR LIZZIE HELMUTH (2 PARCELS)

SCALE 1"=100' MAY 17, 1986 R.H. HUNSINGER, #3685, REGISTERED SURVEYOR

153312



Rec'd. OCT 14 1986 AT 12:24 O'CLOCK P.M.  
 Recorded Oct. 15, 1986 Holmes Co. Ohio Fee: 5.00  
 Plat Vol. 10 Pg. 626 Recorder Richard Grawen

Deed Vol. 232 Pg. 729

Tom Lee  
Drawn