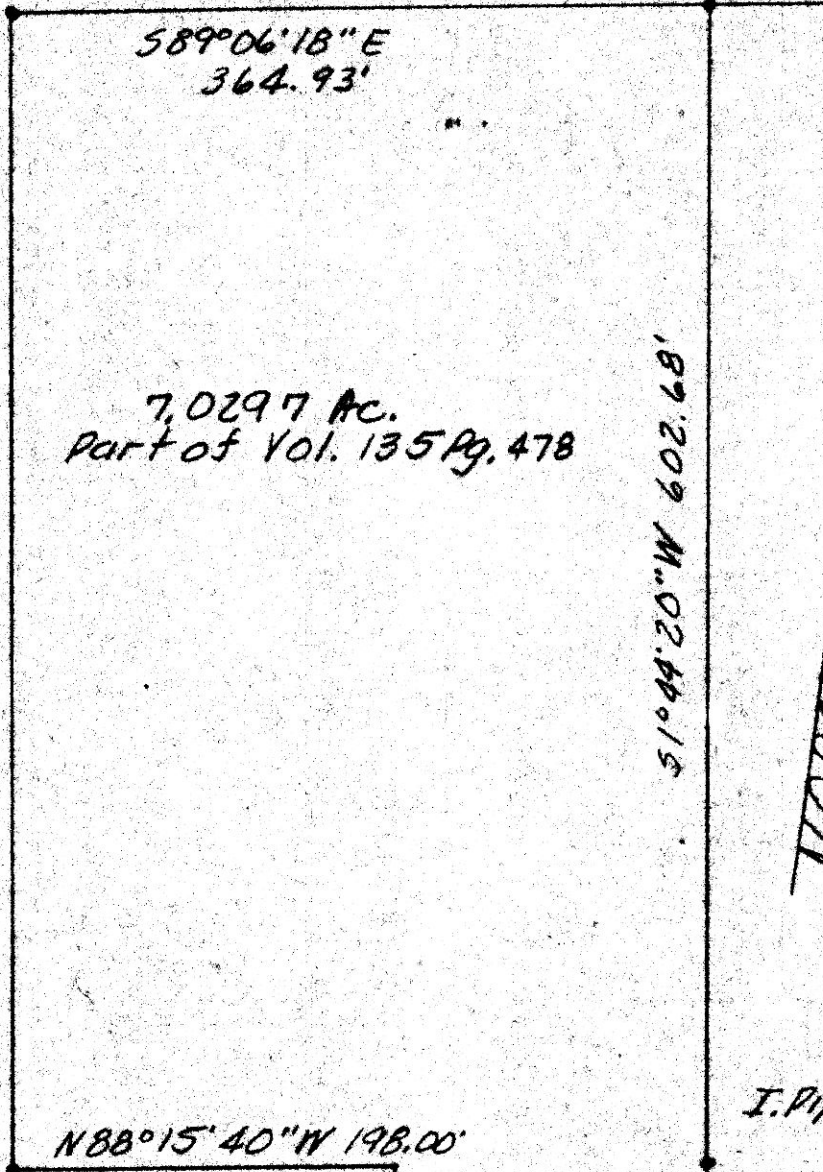


Ronnie R. and Sandra K. Schlegel
Vol. 224 Pg. 49

Page 1-65

I. Pin Found 1985

I. Pin Set 1985



7.0297 Ac.
Part of Vol. 135 Pg. 478

Joe L. & Nancy L. Mosfeld K151 P. 371
N1°30'46\"/>



I. Pipe Found 1985

I. Pipe Found 1985

152720
 REC'D. AUG 27 1986
 AT 12:59 O'CLOCK P.M.
 RECORDED Aug. 28, 1986
 Plat VOL 10 PG. 595
 Holmes Co. Ohio Fee: 7.65
 Richard Shaven Recorder

9x17x5
Deed Vol. 232 Pg. 126

Holmesville Missionary
Baptist Church
V. 186 P. 146

Vernon R. & Susie Yoder
V228 P. 130

2.00 AC.	108.00'
1.00 "	198.
2.40 "	198.
16.8050	288.
2.00	165.
	<u>957.00'</u>

Approximate E.C.R. 329 N88°15'40"W 957.00'

N88°15'40"W 165.00'

S.E. CORNER of N.E. 1/4 of S.E. 1/4 of SEC. 5, TWP. 13 N., RA. 13 W., of PRAIRIE TWP., HOL. CO., OHIO.

Known as part of the N.E. 1/4 of the S.E. 1/4 of SEC. 5, TWP. 13 N., RA. 13 W., of PRAIRIE TWP., HOL. CO., OHIO

Robert L. Kasner P.S. 5193, P.E. 28820, 8/16/86



GRAPHIC SCALE IN FEET



MAP OFFICE COPY