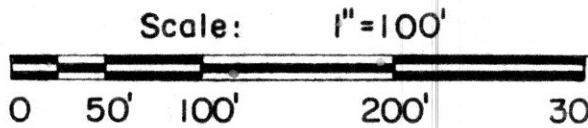


SURVEY PLAT
of a
4.523 ACRE PARCEL

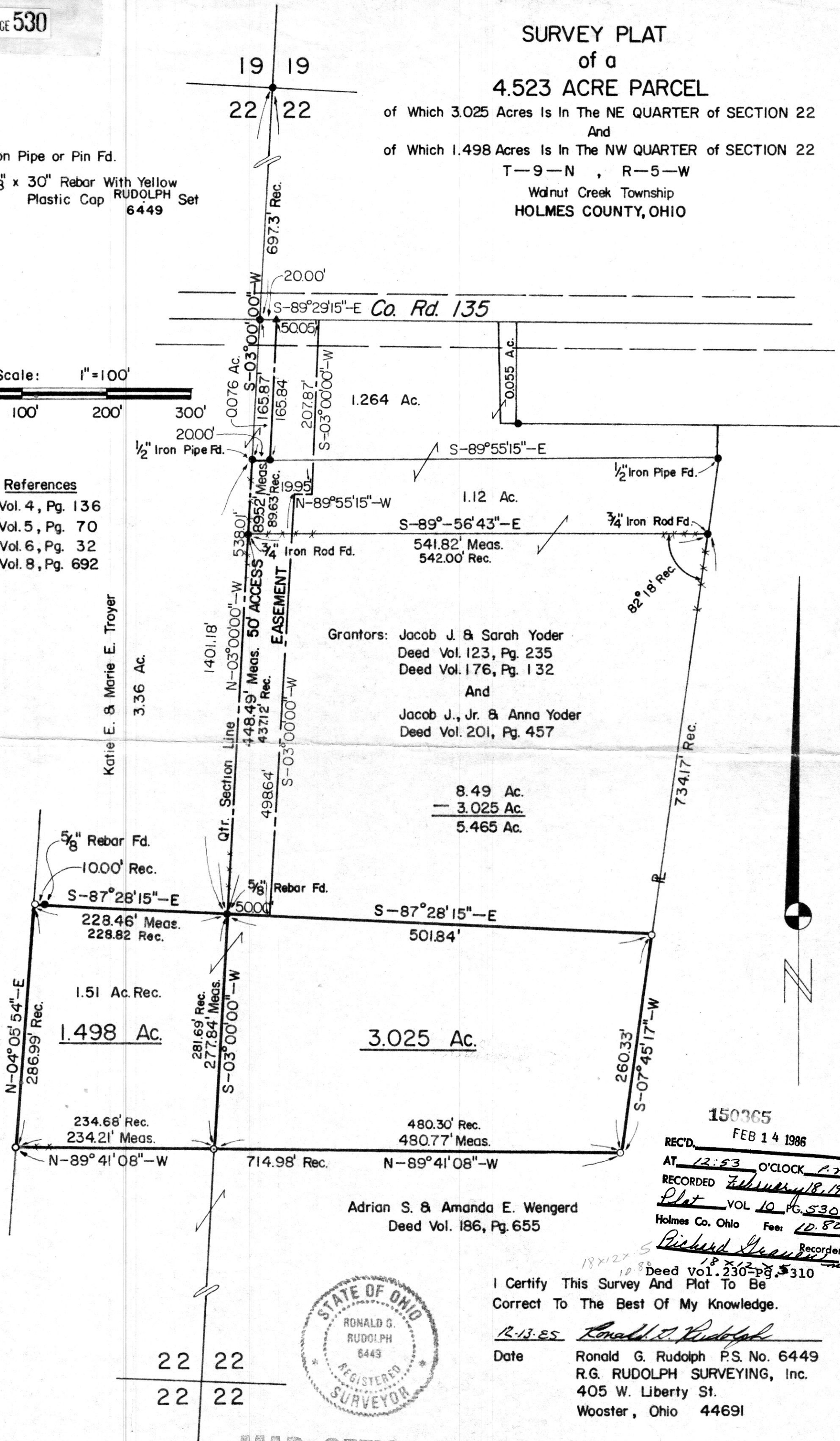
of Which 3.025 Acres Is In The NE QUARTER of SECTION 22
And
of Which 1.498 Acres Is In The NW QUARTER of SECTION 22
T-9-N, R-5-W
Walnut Creek Township
HOLMES COUNTY, OHIO

- Iron Pipe or Pin Fd.
- 5/8" x 30" Rebar With Yellow Plastic Cap RUDOLPH Set 6449



References

- Plat Vol. 4, Pg. 136
- Plat Vol. 5, Pg. 70
- Plat Vol. 6, Pg. 32
- Plat Vol. 8, Pg. 692



Grantors: Jacob J. & Sarah Yoder
Deed Vol. 123, Pg. 235
Deed Vol. 176, Pg. 132
And
Jacob J., Jr. & Anna Yoder
Deed Vol. 201, Pg. 457

Adrian S. & Amanda E. Wengerd
Deed Vol. 186, Pg. 655



150365
REC'D. FEB 14 1986
AT 12:53 O'CLOCK P.M.
RECORDED February 18, 1986
Plat VOL 10 PG. 530
Holmes Co. Ohio Fees 10.80
Richard Stearns Recorder

I Certify This Survey And Plat To Be
Correct To The Best Of My Knowledge.

12-13-85 Ronald G. Rudolph
Date Ronald G. Rudolph P.S. No. 6449
R.G. RUDOLPH SURVEYING, Inc.
405 W. Liberty St.
Wooster, Ohio 44691

Job No. 2007

MAP OFFICE COPY