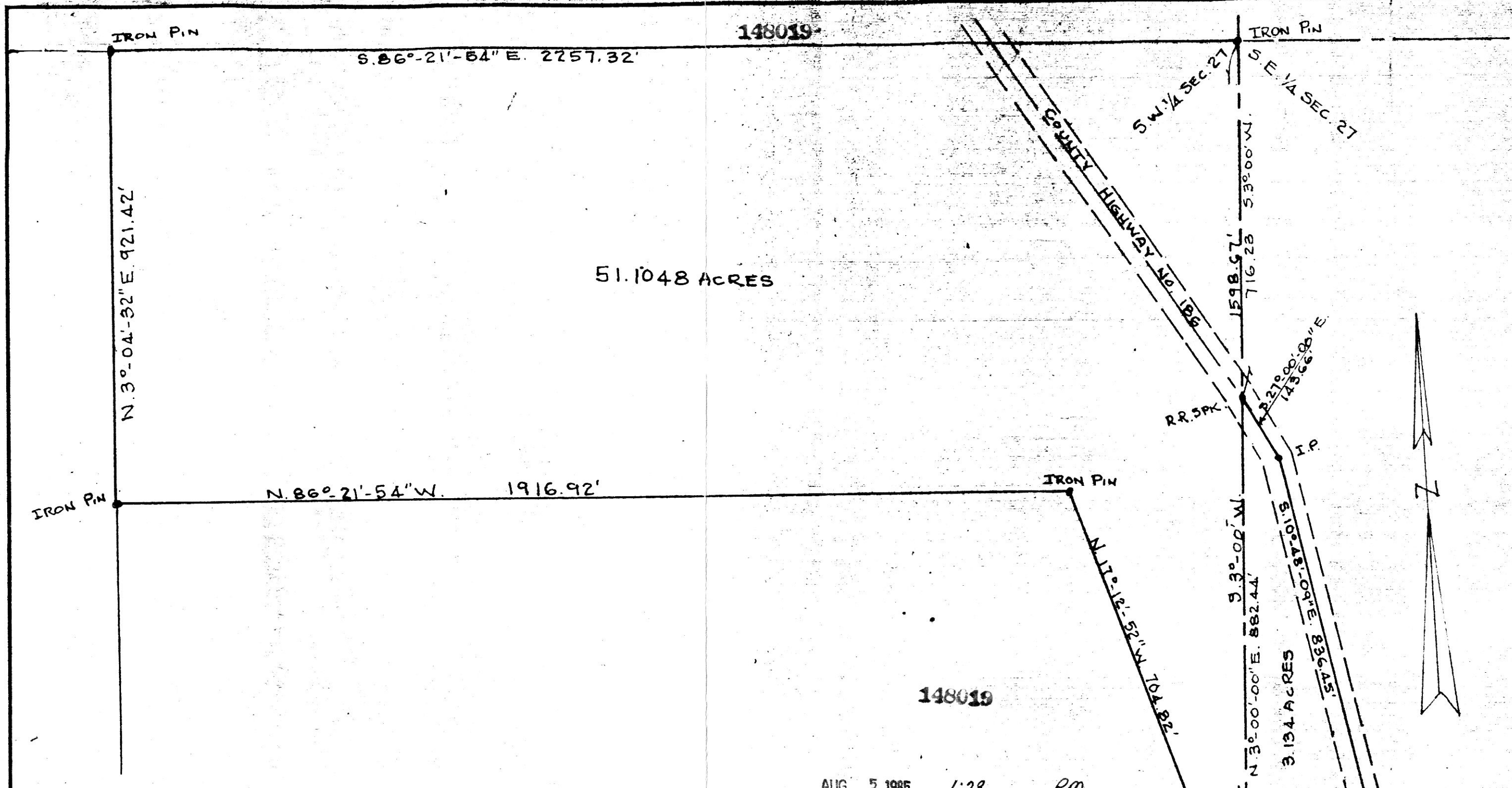


MAP OFFICE COPY



VOL 10 PAGE 458

R. H. HUNSINGER	REGISTERED SURVEYOR.	REG. NO. 3685
PLAT OF A SURVEY OF A PART OF THE SW 1/4 AND THE SE 1/4 OF SEC. 27, TWP. 15, RANGE 11, PAINT TOWNSHIP, HOLMES COUNTY, OHIO 54.2388 ACRES TOTAL. 51.1048 AC. SW 1/4 3.134 AC. SE 1/4		
SCALE 1"=200'		JULY 10, 1985



148019

Rec'd. AUG 5 1985 AT 1:28 O'CLOCK PM
 Recorded Aug 6 1985 Holmes Co. Ohio Fee: 8.00
 Plat Vol. 10 Pg. 458 Recorder: Richard Draughn
 16x10x5 Deed Vol. 228-Pg. 282
 Mtg. Vol. 147-Pg. 162
 Discharge 15-Pg. 520

