

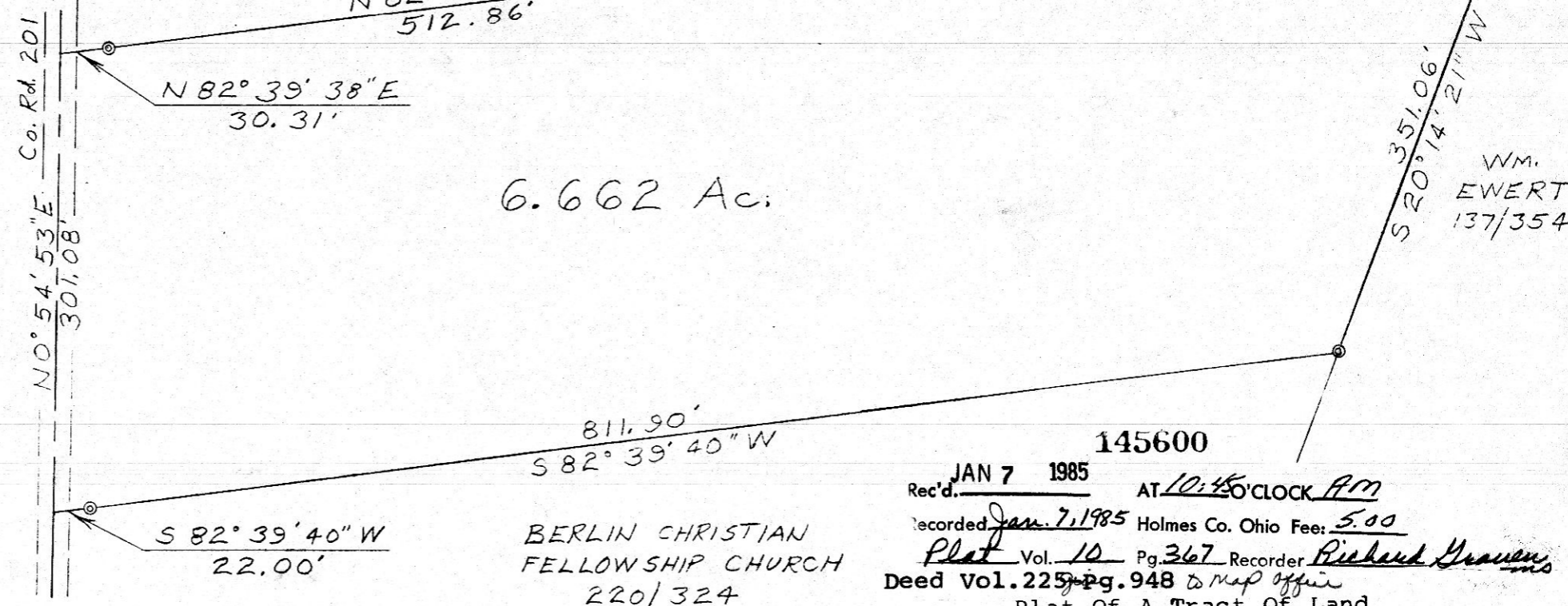
145600

Note: The following documents were used as a source of data for this survey:

- Deeds: 185/158
- 137/354
- 122/65
- P.B.9/Pg. 170

LOT 10 THIRD NELSON MILLER SUBDIVISION

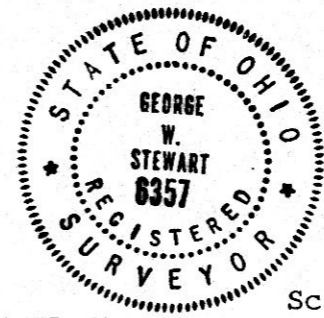
6.662 Ac.



CHAS. E. & DONNA J. BOYLAN 197/475
 S 83° 37' 09" E 356.79'
 M. M. STUTZMAN 213/169

WM. EWERT 137/354
 S 20° 14' 21" W 351.06'

145600
 Rec'd. JAN 7 1985 AT 10:45 O'CLOCK AM
 Recorded Jan. 7, 1985 Holmes Co. Ohio Fee: 5.00
 Plat Vol. 10 Pg. 367 Recorder Richard Weaver, Inc.
 Deed Vol. 225 Pg. 948 to Map Office
 Plat Of A Tract Of Land For Nelson Miller In Lot 22, First Quarter Range 6W, Township 9N Berlin Township Holmes County Ohio



George W. Stewart
 George W. Stewart, Reg. Surveyor #6357

Scale: 1" = 100' July 7, 1983

Recovered Concrete Monument
 Recovered Steel Pin

MAP OFFICE COPY

Produced By
G. A. STEWART INC.
 450 South Fourth St. (614) 622-2783
 COSHOCTON, OHIO 43812

POLARIS OBSERVATION, ± 05"