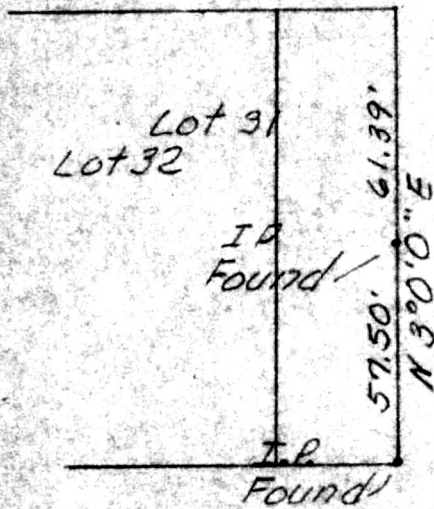
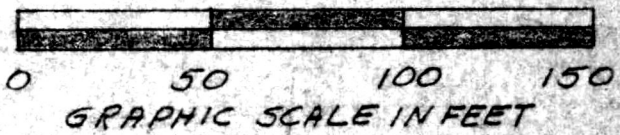
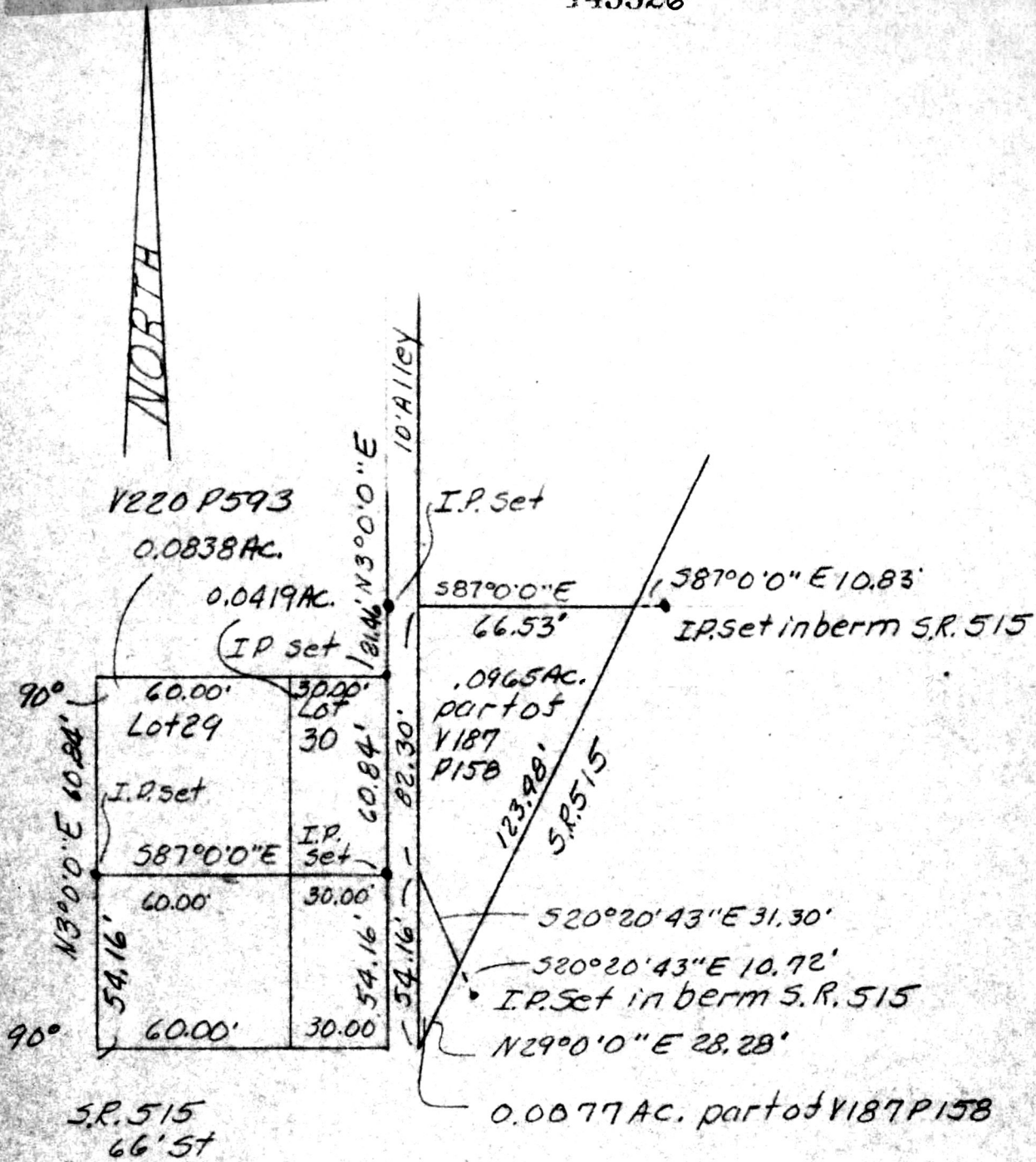


145526

MAP OFFICE COPY



Known as part of Lots 29 & 30 in the Village of Walnut Creek located in Sec. 20, TWP. 9N, Ra. 5 W., of Holmes Co. Ohio, and as a part of the N.W. 1/4 of Sec. 20, TWP. 9N., Ra. 5 W.



Robert L. Kasner P.S. 5193
P.E. 28820
145526 1115182

Rec'd. DEC 28 1984 At 11:36 O'CLOCK AM
Recorded Dec. 31, 1984 Holmes Co. Ohio Fee: 5.00
Plat Vol. 10 Pg. 362 Recorder Richard Strayer