

- 145515 • = set 3/4" x 30" rebar with aluminum cap
- = recovered 1" x 30" rebar with aluminum cap

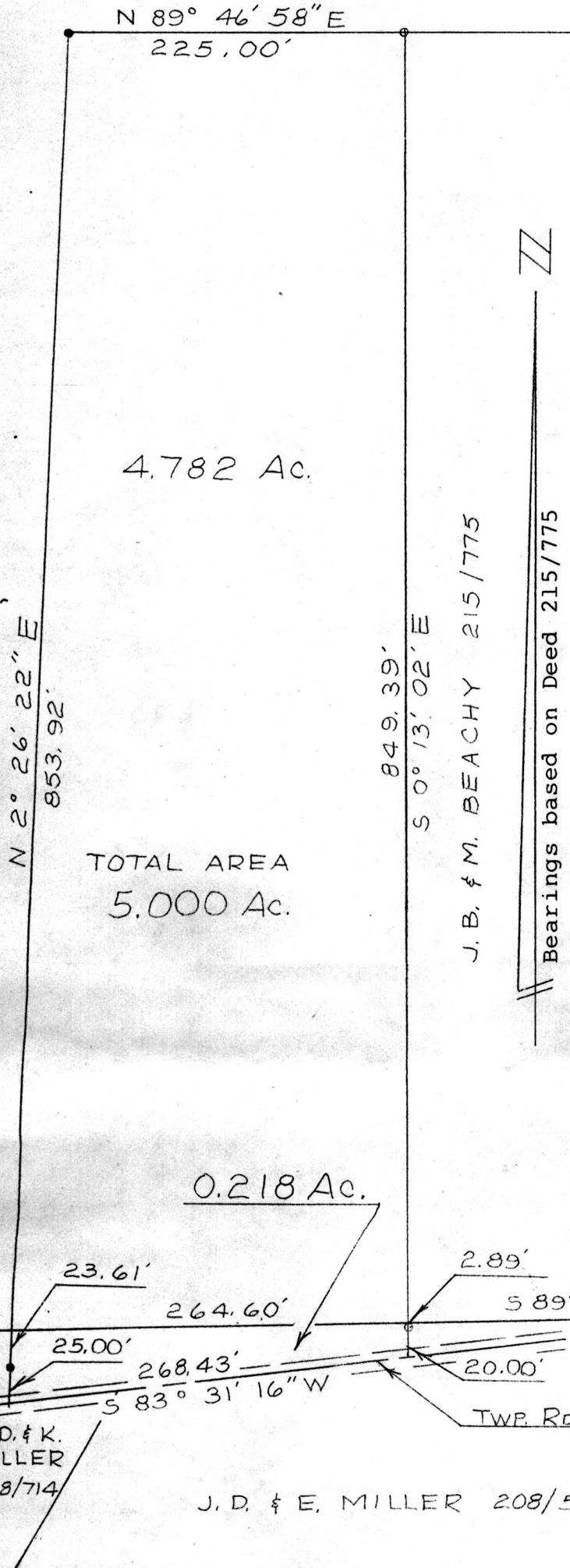
MAP OFFICE COPY



Research Data

Deeds: 169/737 216/775
 208/562 208/714

H. O. & M. YODER 196/737 220/89



145515

DEC 27 1984

REC'D. AT 3:41 O'CLOCK PM

RECORDED December 28, 1984

Plot VOL 10 PG. 360
Holmes Co. Ohio Fee: 5.00

Richard G. Johnson Recorder

Deed Vol. 225-Pg 4880

BOUNDARY SURVEY

FOR

HENRY O. YODER

IN

LOTS 24 & 25, THIRD QUARTER

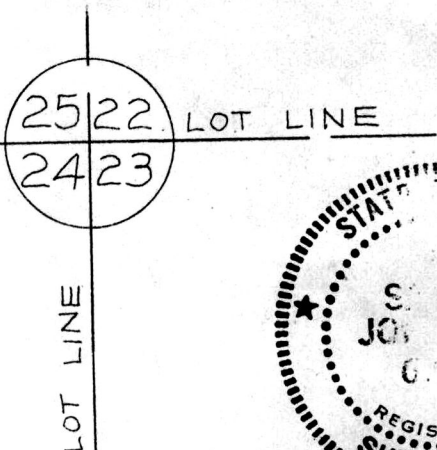
RANGE 5W, TOWNSHIP 10N

SALT CREEK TOWNSHIP

HOLMES COUNTY

OHIO

Scale: 1" = 100' December 13, 1984



R. Scott Johnson
Registered Surveyor #6791