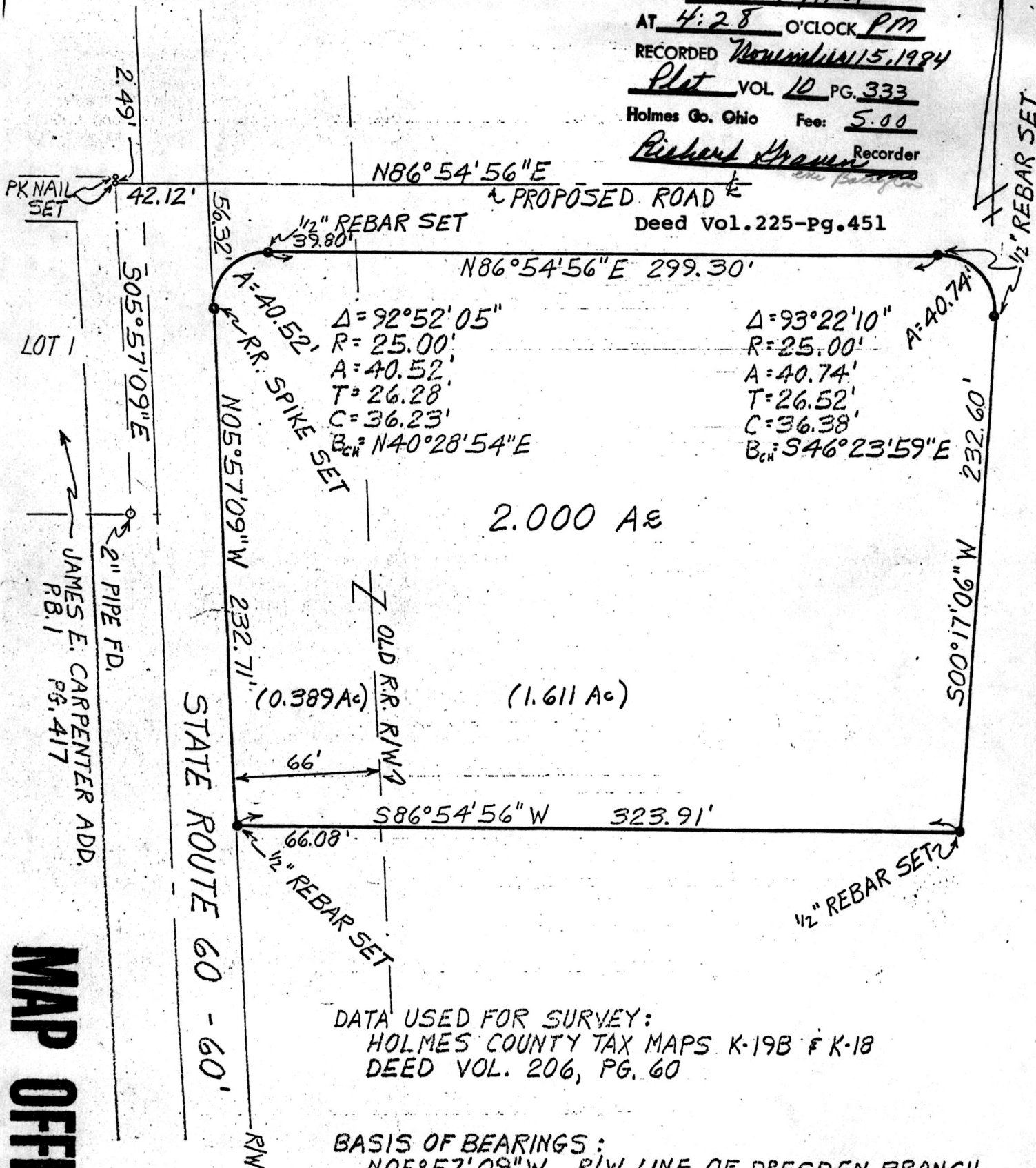


REC'D. Nov. 14, 1984
 AT 4:28 O'CLOCK PM
 RECORDED November 15, 1984
Plot VOL 10 PG. 333
 Holmes Co. Ohio Fee: 5.00
Richard Brown Recorder
 Deed Vol. 225-Pg. 451



LOT 1
 JAMES E. CARPENTER ADD.
 RB. 1 PG. 417

DATA USED FOR SURVEY:
 HOLMES COUNTY TAX MAPS K-19B & K-18
 DEED VOL. 206, PG. 60

BASIS OF BEARINGS:
 $N05^\circ 57' 09'' W$, R/W LINE OF DRESDEN BRANCH
 OF C.A. & C. RAILROAD FROM DEED VOL. 206, PG. 60

MAP OF SURVEY

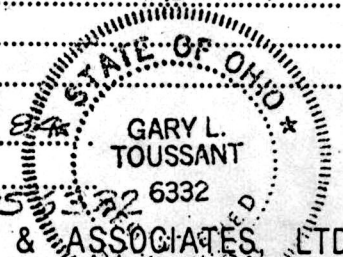
I hereby certify that this is a correct survey made by me of A 2.000 ACRE TRACT SITUATED IN THE VILLAGE OF KILLBUCK, TOWNSHIP OF KILLBUCK, COUNTY OF HOLMES & STATE OF OHIO & BEING PART OF THE NORTHWEST QUARTER OF SECTION 15 (T-8, R-7) FOR CHARLES STRAITS

This certification made by me this 20TH day of SEPTEMBER 19 84

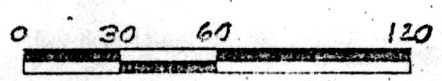
REV: OCT. 15, 1984

GARY L. TOUSSANT P.S.M. 6332

SCALE: 1 INCH = 60 FEET



HAMMONTREE & ASSOCIATES, LTD.
 ENGINEERS, PLANNERS, SURVEYORS
 CANTON - ORLANDO - PITTSBURGH - AKRON



MAP OFFICE COPY