

SURVEY of a 4.133 ACRE PARCEL

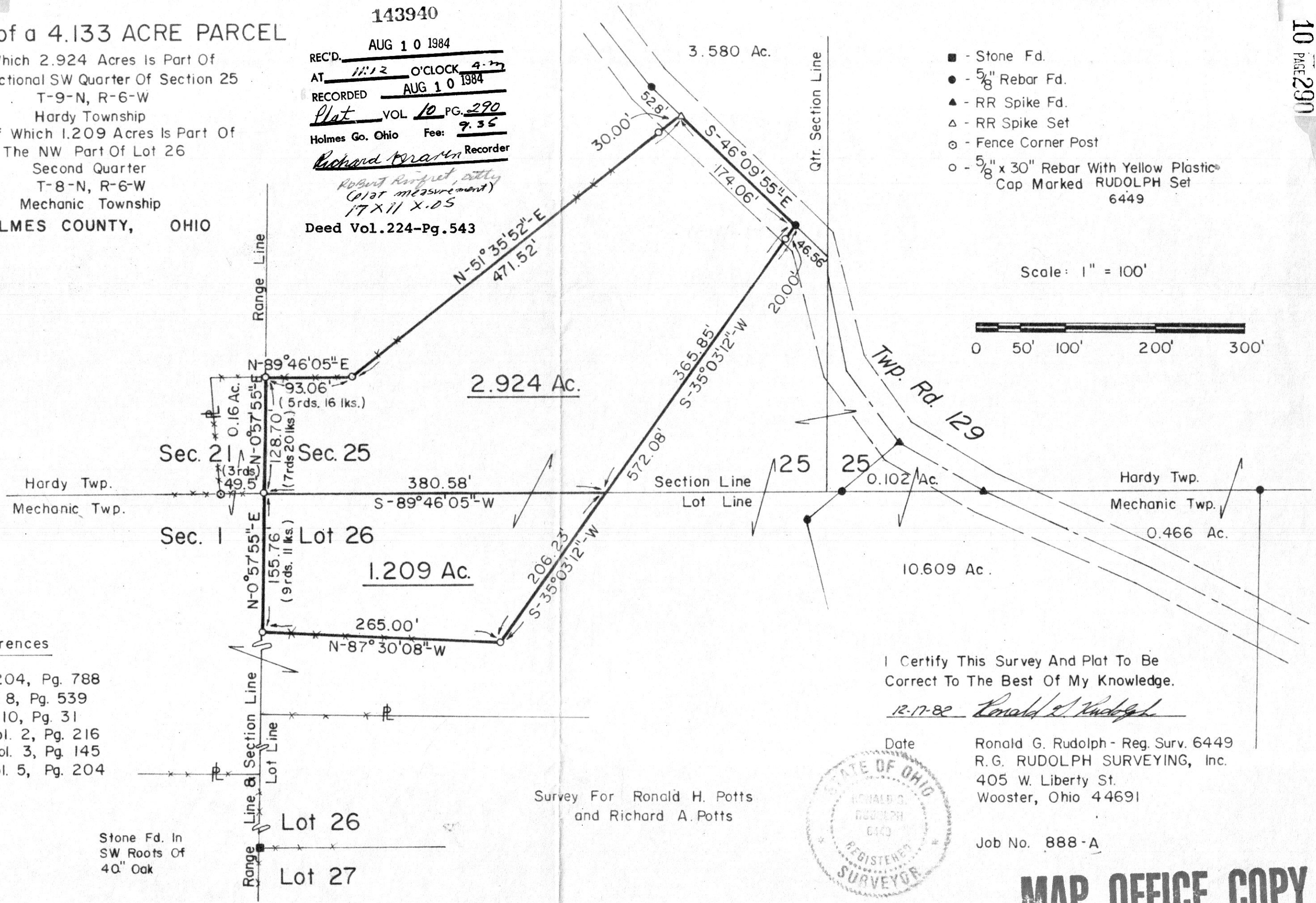
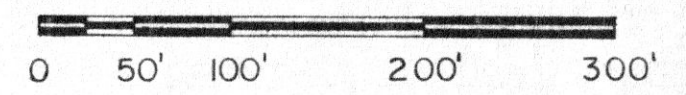
Of Which 2.924 Acres Is Part Of
 The Fractional SW Quarter Of Section 25
 T-9-N, R-6-W
 Hardy Township
 And Of Which 1.209 Acres Is Part Of
 The NW Part Of Lot 26
 Second Quarter
 T-8-N, R-6-W
 Mechanic Township
HOLMES COUNTY, OHIO

143940

REC'D. AUG 10 1984
 AT 11:12 O'CLOCK 4-22
 RECORDED AUG 10 1984
 Plat VOL 10 PG. 290
 Holmes Co. Ohio Fee: 9.35
Richard Bramm Recorder
Robert Ruffert, City
(Plat measurement)
17x11 X.D.S
 Deed Vol. 224-Pg. 543

- - Stone Fd.
- - 5/8" Rebar Fd.
- ▲ - RR Spike Fd.
- △ - RR Spike Set
- - Fence Corner Post
- - 5/8" x 30" Rebar With Yellow Plastic Cap Marked RUDOLPH Set 6449

Scale: 1" = 100'



References

- Deed Vol. 204, Pg. 788
- Plat Vol. 8, Pg. 539
- Plat Vol. 10, Pg. 31
- Surv. Rec. Vol. 2, Pg. 216
- Surv. Rec. Vol. 3, Pg. 145
- Surv. Rec. Vol. 5, Pg. 204

Stone Fd. In
 SW Roots Of
 40" Oak

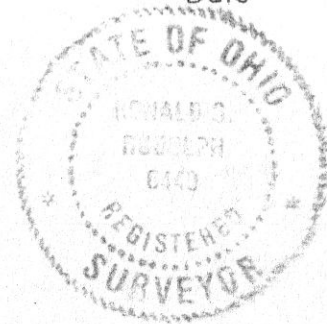
I Certify This Survey And Plat To Be
 Correct To The Best Of My Knowledge.

12-17-82 *Ronald G. Rudolph*

Date
 Ronald G. Rudolph - Reg. Surv. 6449
 R.G. RUDOLPH SURVEYING, Inc.
 405 W. Liberty St.
 Wooster, Ohio 44691

Job No. 888-A

Survey For Ronald H. Potts
 and Richard A. Potts



MAP OFFICE COPY