

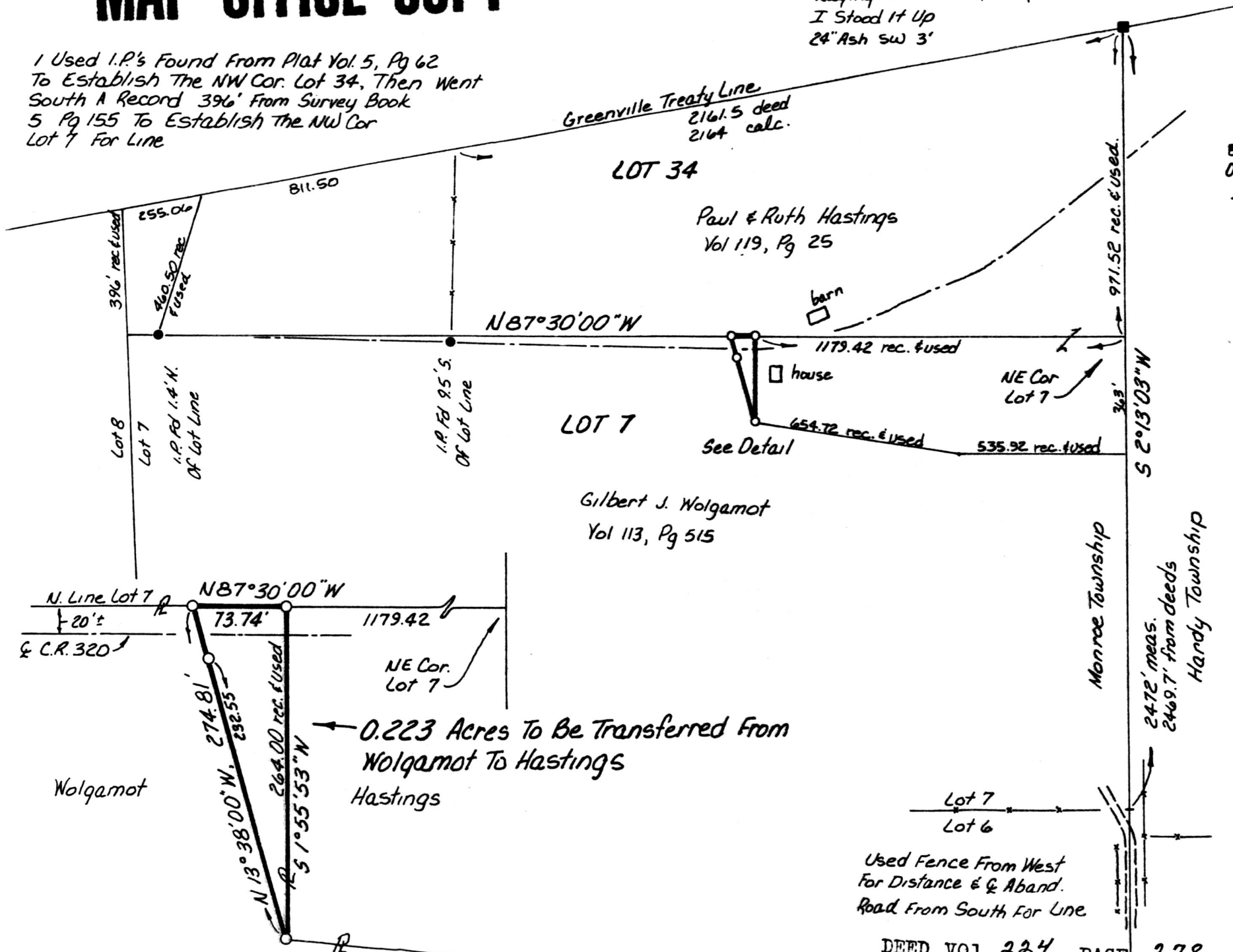
MAP OFFICE COPY

143600

Painted Stone 2' Tall Found
Laying Over A Very Large Stone
I Stood It Up
24" Ash SW 3'

MONROE TOWNSHIP
HOLMES COUNTY, OHIO
LOT 7, 1ST QTR. T-9N, R-8W

I Used I.P.'s Found From Plat Vol. 5, Pg 62
To Establish The NW Cor. Lot 34, Then Went
South A Record 396' From Survey Book
5 Pg 155 To Establish The NW Cor
Lot 7 For Line



0 200 400 600 800
Scale In Feet 1" = 400'

- Stone Found
- Iron Pin Found
- Iron Pin Set - 5/8" Bar With Yellow Cap Marked "LONG-6505"

Bearing On N. Line Lot 7 From Deeds

References: Survey Book 2, Pg 350
" " 5, Pg 155
Plat Book 5, Pg 62
Deeds As Shown

July 6, 1984

I Certify This Survey To Be Correct To
The Best Of My Knowledge

William H. Long
William H. Long R.S. 6505
13301 T.R. 503
Big Prairie, Ohio 44611

143600

Used Fence From West
For Distance & Aband.
Road From South For Line

DEED VOL. 224 PAGE 278

JUL 12 1984

Rec'd. AT 3:37 O'CLOCK PM

Recorded July 13, 1984

Holmes Co. Ohio Fee: 5.00

Plat Vol. 10

Pg. 275 Recorder Richard Brown