

10 PAGE 269

143449

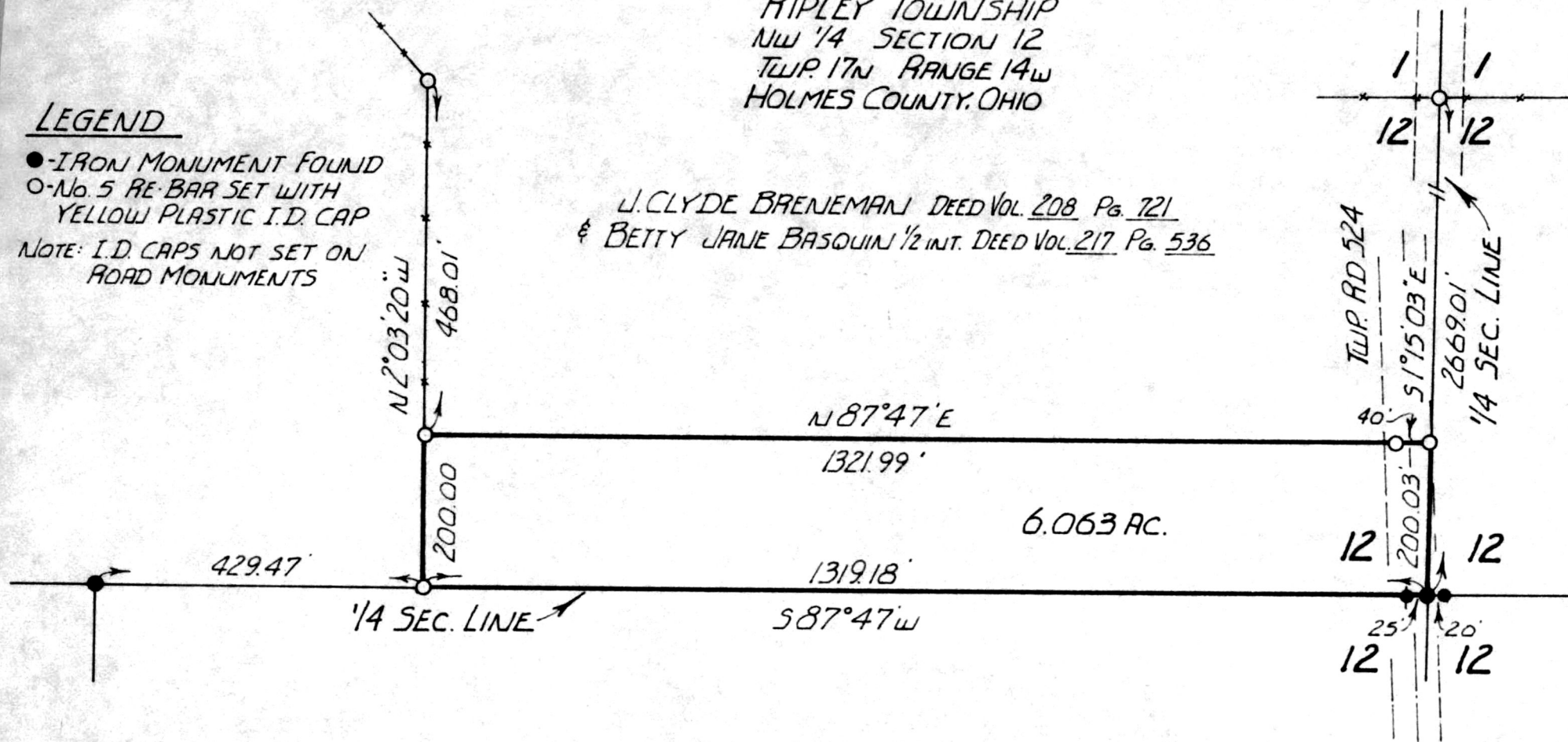
RIPLEY TOWNSHIP
NW 1/4 SECTION 12
TWP. 17N RANGE 14W
HOLMES COUNTY, OHIO

S-99-83

LEGEND

- - IRON MONUMENT FOUND
 - - No. 5 RE-BAR SET WITH YELLOW PLASTIC I.D. CAP
- NOTE: I.D. CAPS NOT SET ON ROAD MONUMENTS

J. CLYDE BRENEMAN DEED VOL. 208 Pg. 721
& BETTY JANE BASQUIN 1/2 INT. DEED VOL. 217 Pg. 536



SCALE:
1" = 200'

SURVEY MADE FOR AND AT
THE REQUEST OF:
J. CLYDE BRENEMAN

143449

JUN 28 1984

Rec'd. JUN 29 1984

Recorded

Plat Vol. 10

AT 2:59 O'CLOCK PM

Holmes Co. Ohio Fee: 5.00

Pg. 269 Recorder: Richard Haven

sw. Milton wear

Deed Vol. 224; Pg. 110.

I CERTIFY THIS PLAT CORRECT
TO THE BEST OF MY KNOWLEDGE.



Ray W. Gasbarre
RAY W. GASBARRE PS. 4153
R.W. GASBARRE & ASSOC. INC.
P.O. BOX 44
WOOSTER, OHIO 44691

COMPLETED: 10-26-83

MAP OFFICE COPY