

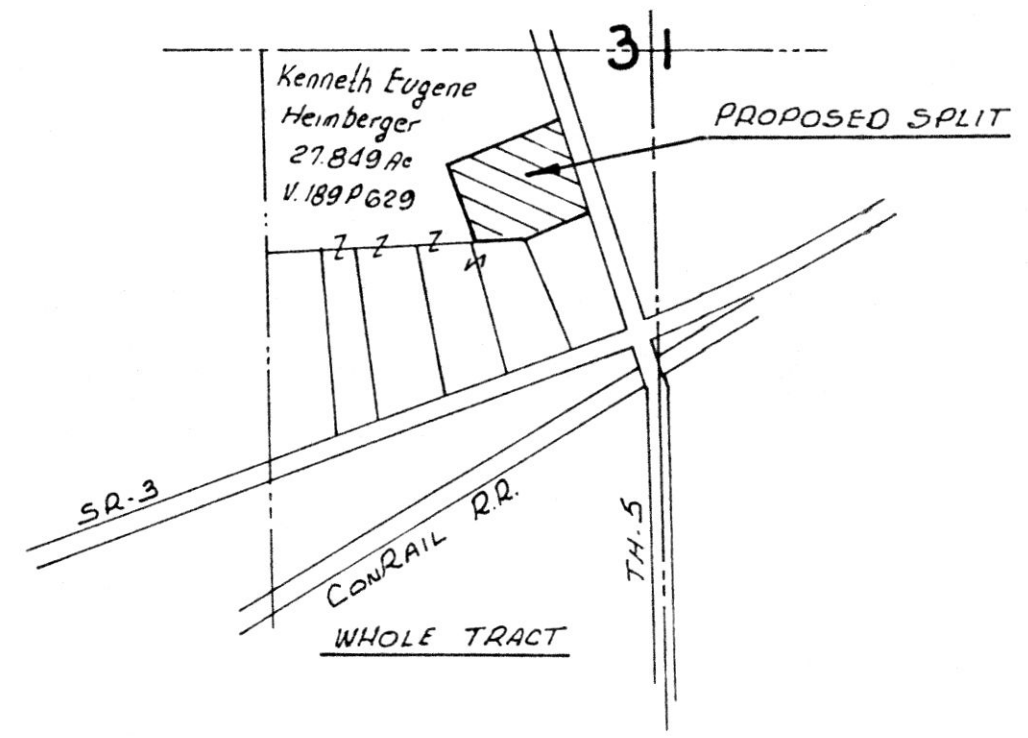
DATE	SYM	REVISION RECORD	AUTH	DR	CK



Reference Surveys
Plat Vol 6 Pg 51
Plat Vol 6 Pg 116

LEGEND

- Iron Pipe Found
- Iron Pin Set: 1/2" galv. pipe w/cap marked SANFORD 5424



I hereby certify that the survey of 3.00 acres of land appended hereto was surveyed by me, is based on actual measurement, and was carried out in a reasonable and prudent manner.

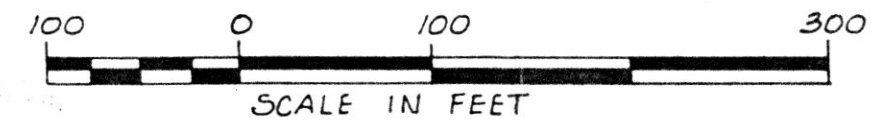
Date 2/13/84 Robert A. Sanford, P.S. R.L.S. 5424
Professional Surveyor



142324

Received APR 23 1984
At 1:18 O'clock PM
Recorded April 24, 1984
Holmes Co. Plat Vol 10 Pg 244
Fee 8.00

Richard Brown Recorder
10 X 16 X 1"



TOLERANCES (EXCEPT AS NOTED)	WASHINGTON TWP. E 1/2 SW 1/4 SEC-31 T-20 R-15 HOLMES COUNTY, OHIO		
DECIMAL	SCALE 1" = 100'	DRAWN BY R.A. SANFORD, P.S. APPROVED BY	
FRACTIONAL	TITLE SURVEY PLAT MAP OF 3.00 AC. FOR KENNETH EUGENE HEIMBERGER		
ANGULAR	DATE 2-13-84	DRAWING NUMBER 555-1984	

SANFORD SURVEYING
402 SLOAN AVE. ASHLAND, OH.

MAP OFFICE COPY

DEED VOL. 223 PAGE 323

VOL 10 PAGE 244