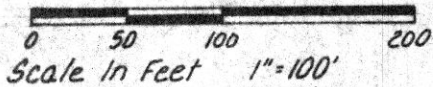


142175

HARDY TOWNSHIP
HOLMES COUNTY, OHIO
SW QTR. SECTION 12, T9N, R-7W
SE QTR. SECTION 13, T-9N, R-7W

Sec. Line Reconstructed From
Gasbarre's Plat 4, Pg 118 Passes
Between 2 Stumps. - All That Remains
Of A Fence Row

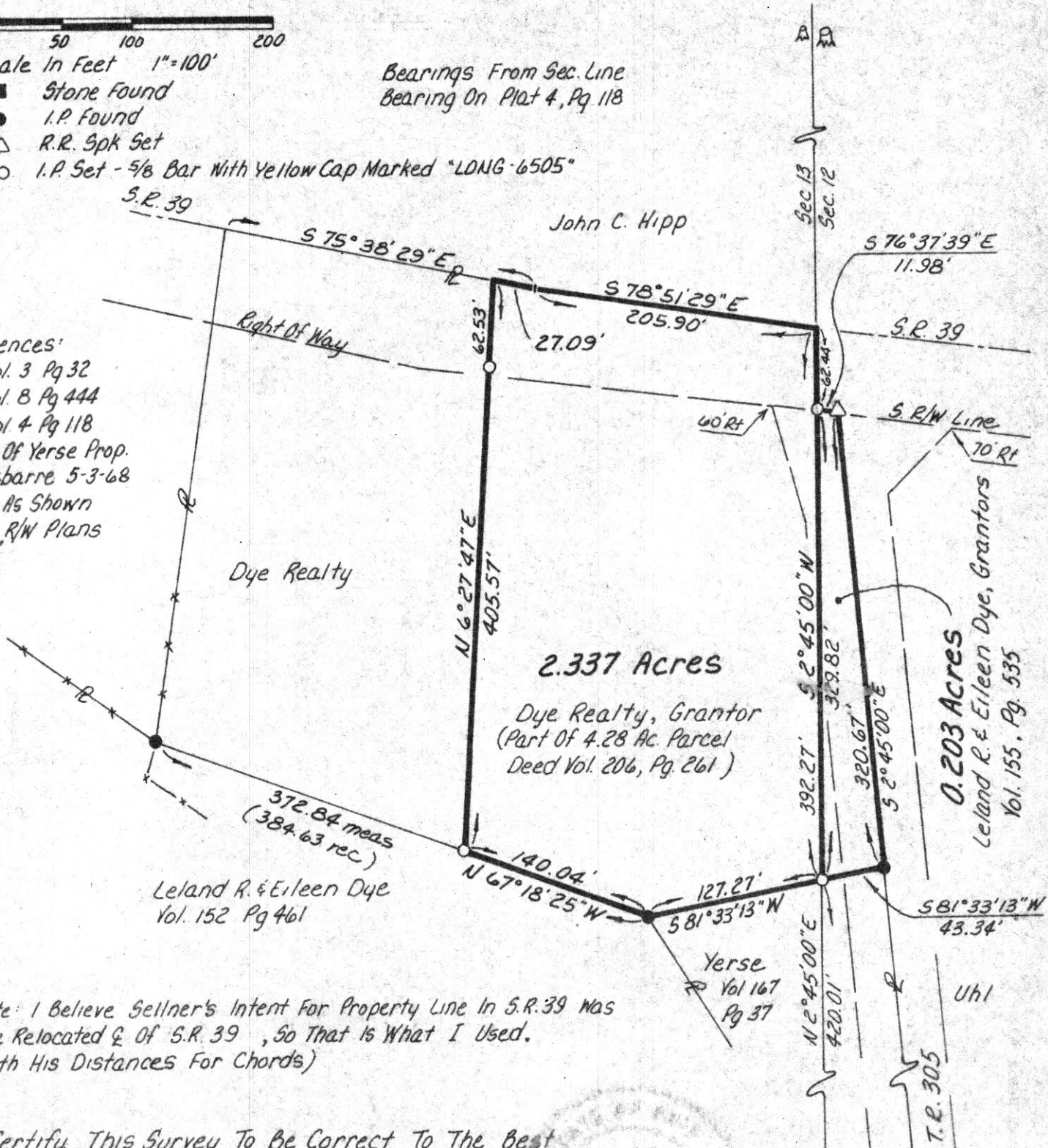


- Stone Found
- I.P. Found
- △ R.R. Spk Set
- I.P. Set - 5/8 Bar With Yellow Cap Marked "LONG-6505"

Bearings From Sec. Line
Bearing On Plat 4, Pg 118

References:
Plat Vol. 3 Pg 32
Plat Vol. 8 Pg 444
Plat Vol. 4 Pg 118
Survey Of Yerse Prop.
By Gasbarre 5-3-68
Deeds As Shown
S.R. 39 R/W Plans

MAP OFFICE COPY



Note: I Believe Sellner's Intent For Property Line In S.R. 39 Was
The Relocated Q Of S.R. 39, So That Is What I Used.
(With His Distances For Chords)

I Certify This Survey To Be Correct To The Best
Of My Knowledge.

William H. Long Feb. 29, 1984

William H. Long R.S. 6505
13301 T.R. 503
Big Prairie, Ohio 44611

142175

Rec'd April 18, 1984 AT 3:41 O'CLOCK PM 13 12

Recorded April 19, 1984 Holmes Co. Ohio Fee: \$ 00 18 19

Plat Vol. 10 Pg. 242 Recorder Richard Brown