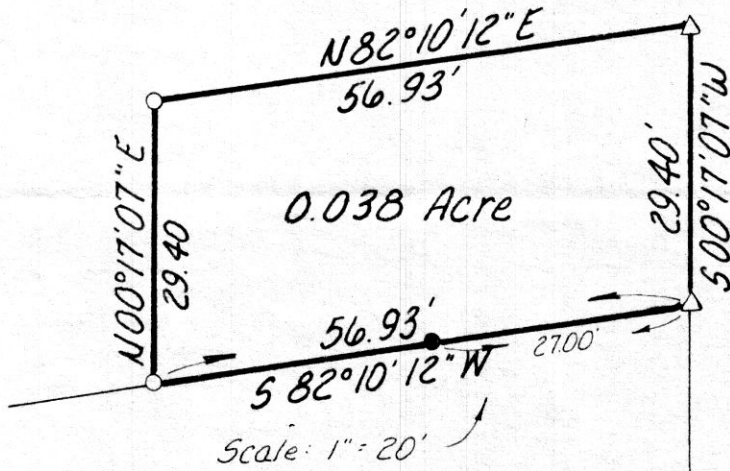


140320

MONROE TOWNSHIP  
HOLMES COUNTY, OHIO  
LOT 16, 4TH QTR. T-9N, R-8W

Survey Of A 0.038 Ac. Parcel To Be Transferred To Raymond Cullen



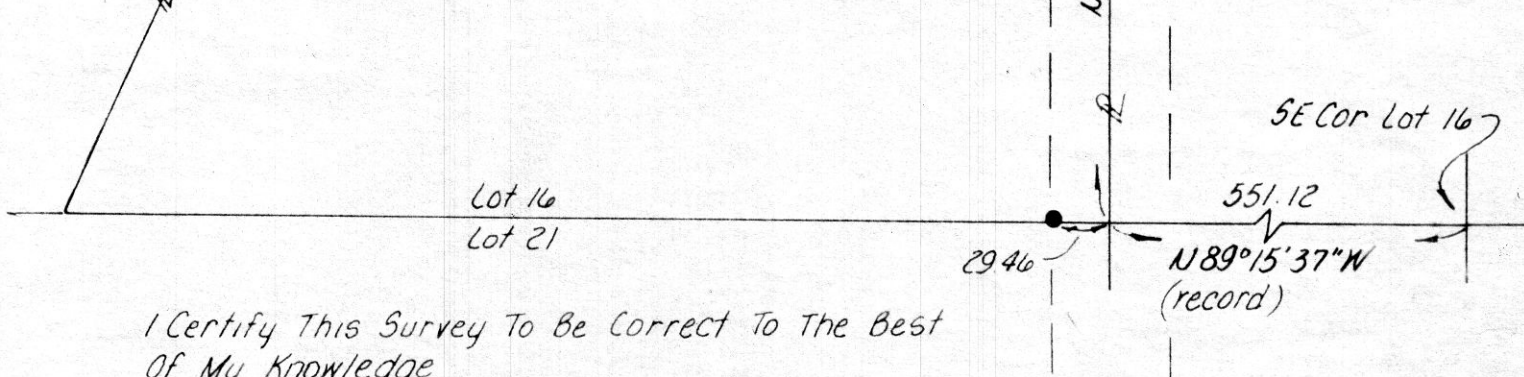
Scale: 1" = 100'

I.P. Found  
R.R. Spk Set  
I.P. Set  
(5/8" Rebar w/ Yellow Cap)

Reference:  
Plat Vol 7, Pg 516  
Bearings From Plat  
Vol 7, Pg 516

Estate Of George Cullen

Raymond & Rose Cullen  
3479 Ac



I Certify This Survey To Be Correct To The Best  
Of My Knowledge  
William H Long Aug 19, 1983  
William H. Long, R.S. 6505  
RD 1 Box 69A  
Big Prairie, Ohio 44611

MAP OFFICE COPY

140320

Rec'd. Jan 23, 1984 AT 1:17 O'CLOCK PM  
Recorded Jan 24, 1984 Holmes Co. Ohio Fee: 5.00  
Plat Vol. 10 Pg. 226 Recorder Richard Straven  
8 1/2 x 14

Deed Vol. 222; Pg. 652.

ew. R. Cullen