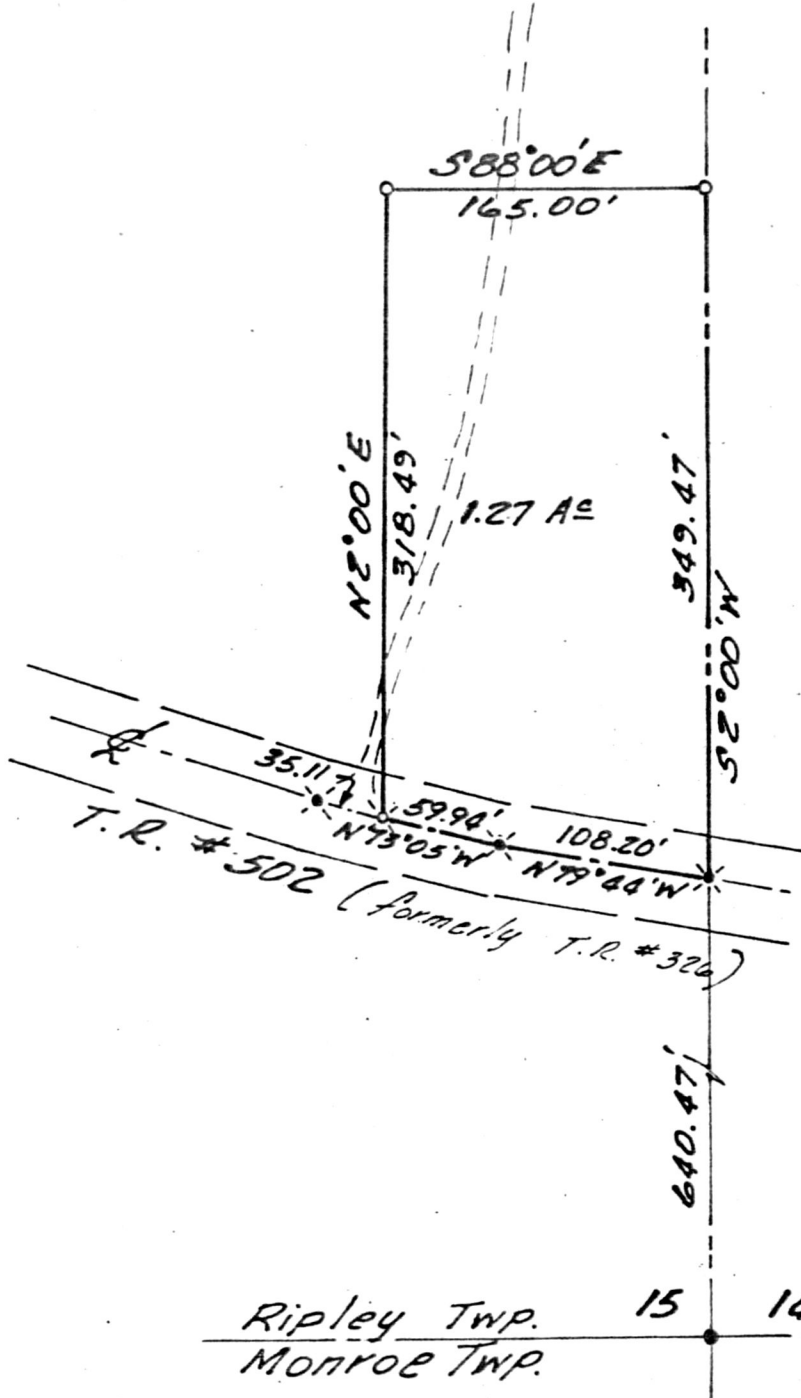


139587  
MAP OF SURVEY  
1.27 A± Pct.  
S.E. QTR. SEC. 15  
RIPLEY TWP.  
T-17N; R-14W  
HOLMES CO. OHIO  
FOR LEE HART



- \* R.R. SPIKE FOUND
- I.P. FOUND
- \* R.R. SPIKE SET
- I.P. SET

Ripley Twp. 15 14  
MONROE TWP.

I hereby certify this survey and plat to be correct to the best of my knowledge this 13<sup>TH</sup> day of JUNE 1983

*Virgil D. Landis*

Virgil D. Landis, P.S. # 6551

SHAFER, JOHNSTON, LICHTENWALTER & ASSOCIATES, INC.

CONSULTING ENGINEERS - SURVEYORS  
MANSFIELD OHIO WOOSTER



MAP OFFICE COPY

139587

REC'D. Nov 21, 1983  
AT 10:32 O'CLOCK AM  
RECORD'D Nov. 21, 1983  
Plat VOL. 10 PG. 212  
Holmes Co. Ohio Fee: 5.00

*Richard [Signature]* Recorder  
This copy goes back to map office

Deed Vol.222;Pg.182.