

L.P.C.  
T.M.: B-II  
PHOTO: 615

137071

5-41-83

# BERLIN TOWNSHIP

## PT. LOT 21

### 4<sup>TH</sup> QTR.

### T-9N; R-6W

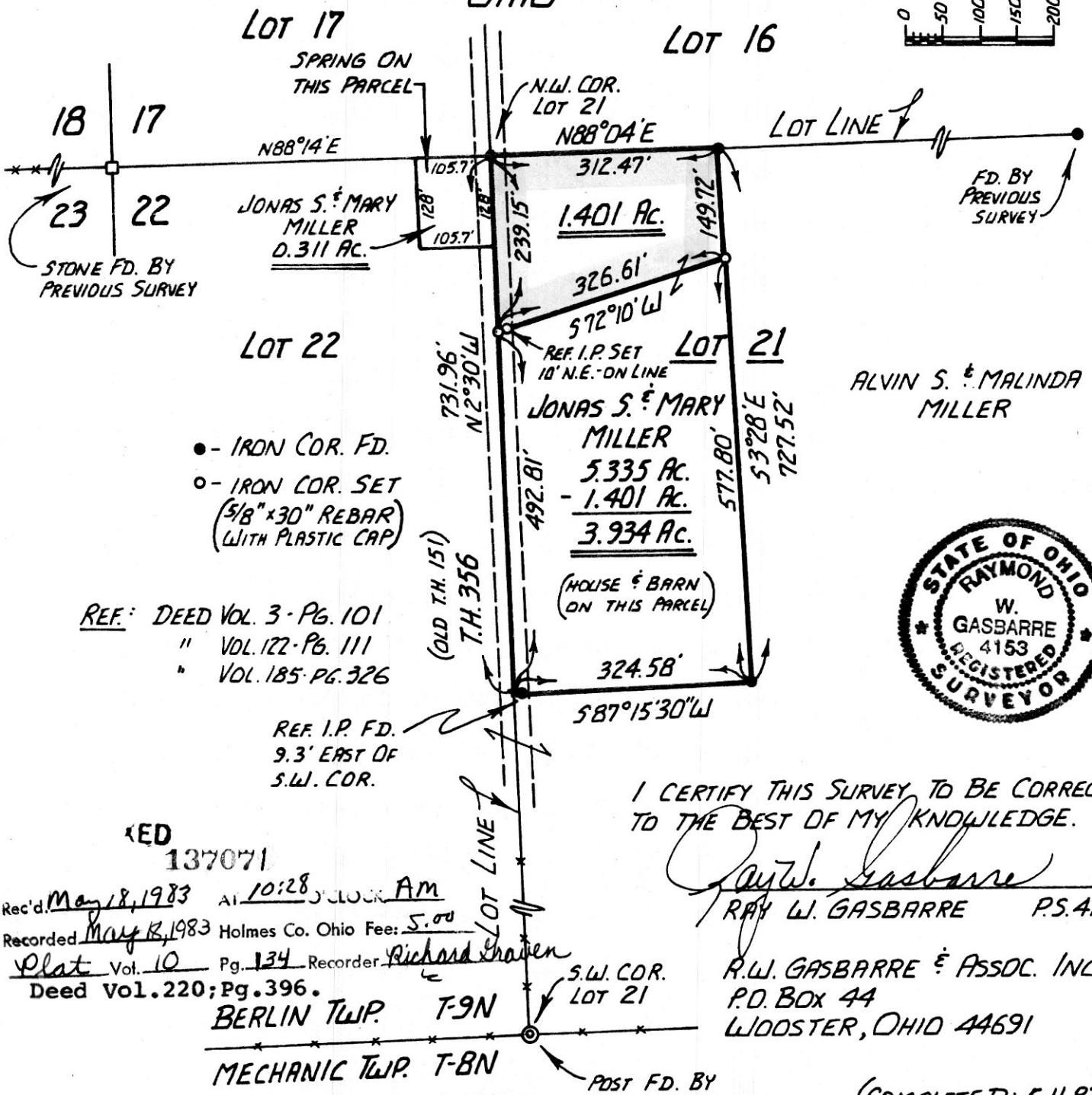
# HOLMES COUNTY

## OHIO

# N



SCALE: 1"=200'



- - IRON COR. FD.
- - IRON COR. SET (5/8" x 30" REBAR WITH PLASTIC CAP)

REF: DEED VOL. 3 - PG. 101  
" VOL. 122 - PG. 111  
" VOL. 185 - PG. 326



I CERTIFY THIS SURVEY TO BE CORRECT TO THE BEST OF MY KNOWLEDGE.

*Ray W. Gasbarre*  
RAY W. GASBARRE P.S. 4153

REC'D 137071  
 Rec'd May 18, 1983 At 10:28 O'CLOCK AM  
 Recorded May 18, 1983 Holmes Co. Ohio Fee: 5.00  
 Plat Vol. 10 Pg. 134 Recorder Richard Chaven  
 Deed Vol. 220; Pg. 396.  
 BERLIN TWP. T-9N  
 MECHANIC TWP. T-8N

R.W. GASBARRE & ASSOC. INC.  
P.O. BOX 44  
WLOOSTER, OHIO 44691

# MAP OFFICE COPY

(COMPLETED: 5-11-83)