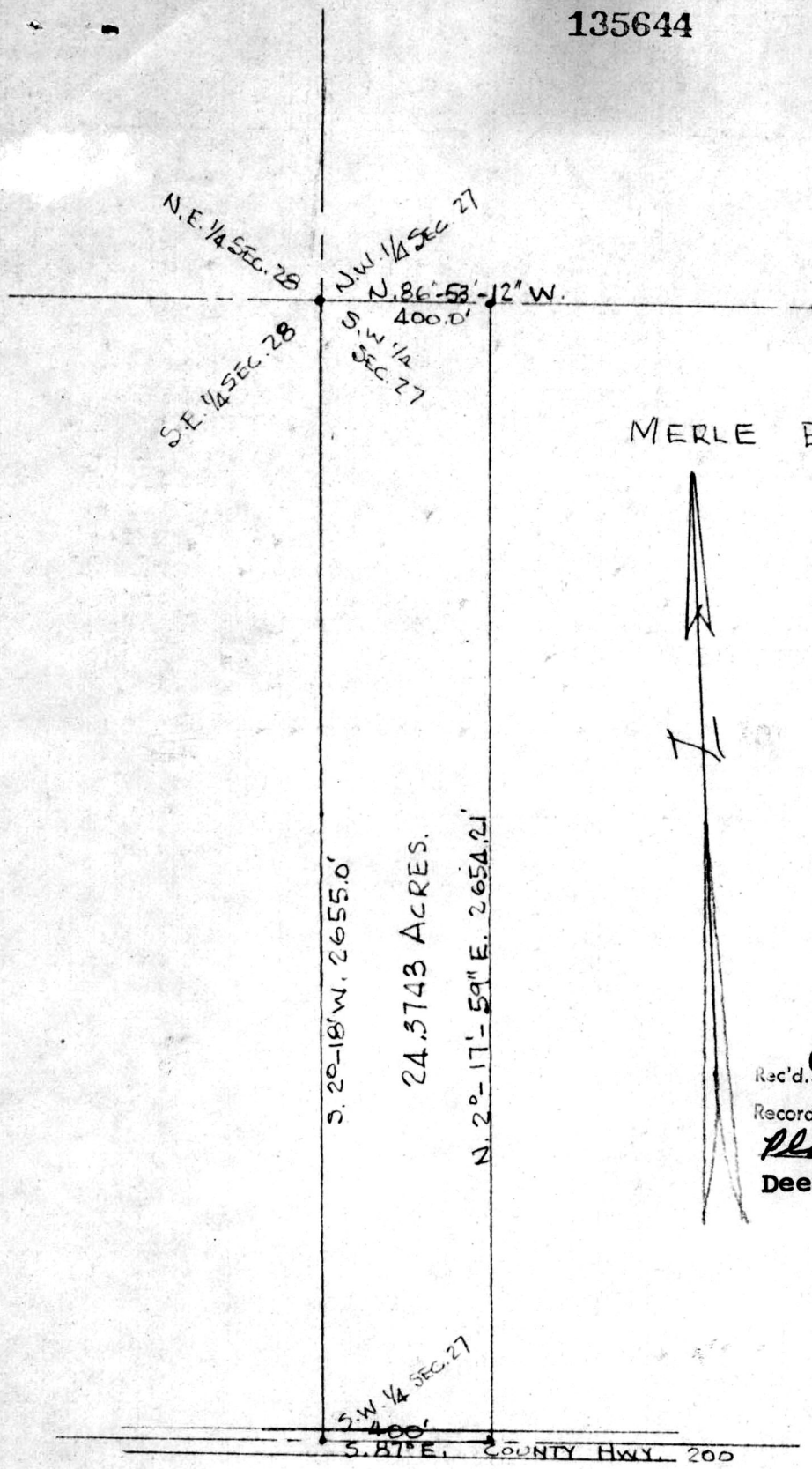


135644



MERLE EVANS.

135644

Rec'd. Jan. 25, 1983 AT 10:33 O'CLOCK AM
 Recorded Jan. 25, 1983 Holmes Co. Ohio Fees 2.00
Plat Vol. 10 Pg. 92 Recorder Richard
 Deed Vol. 219; Pg. 400. Shaver
g. Schuler



PLAT OF A SURVEY OF A PART OF THE
 S.W. 1/4 OF SEC. 27, TWP. 15, RANGE 11, PAINT
 TOWNSHIP, HOLMES COUNTY, OHIO FOR
 MERLE O. EVANS (24.3743 ACRE PARCEL)
 SCALE - 1" = 400' AUGUST 27, 1982
 R.H. HUNSINGER, #3685, REGISTERED SURVEYOR

MAP OFFICE COPY