

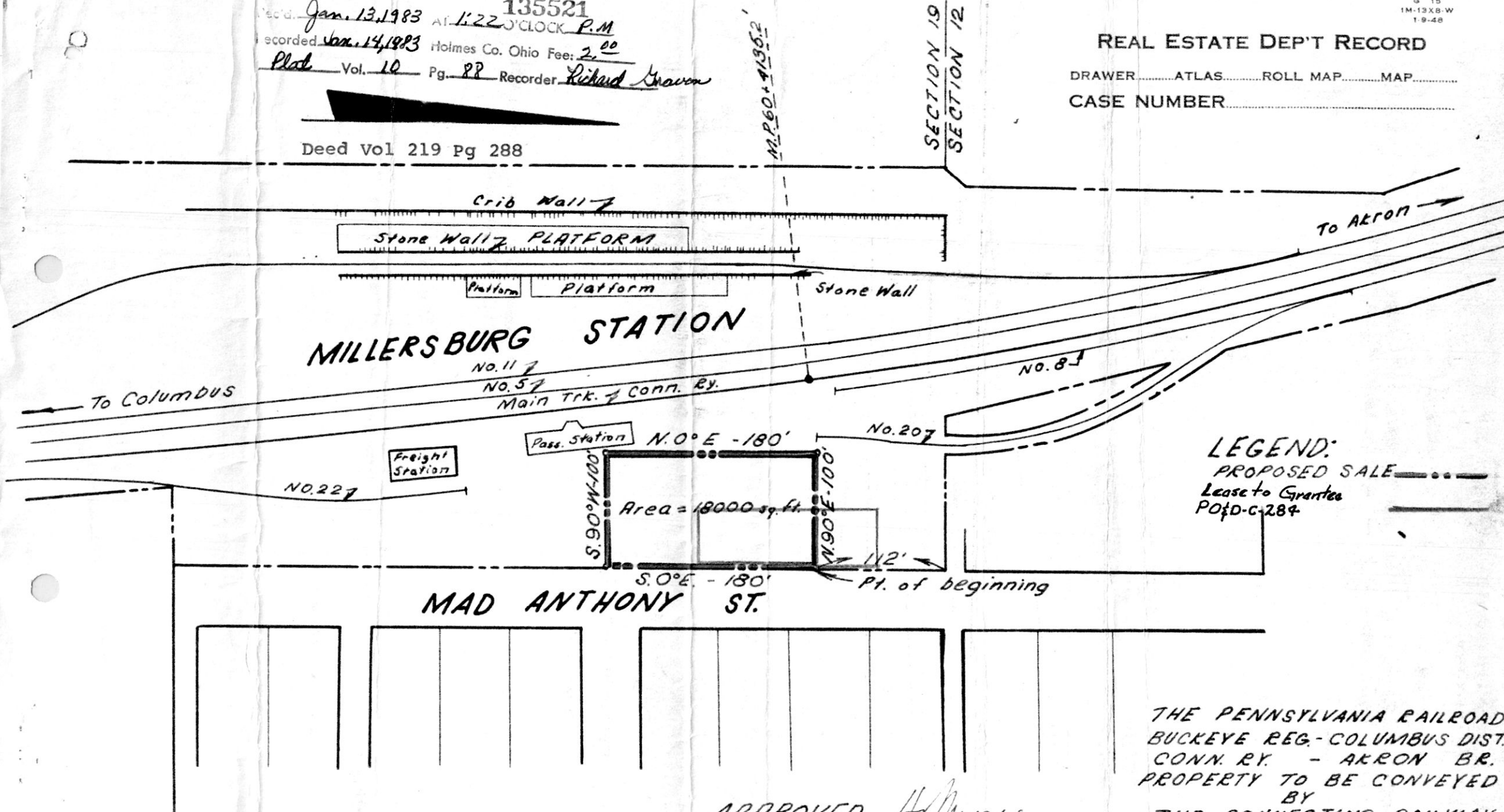
135521
 Recd. Jan. 13, 1983 At 1:22 O'CLOCK P.M.
 Recorded Jan. 14, 1983 Holmes Co. Ohio Fee: 2.⁰⁰
 Plot Vol. 10 Pg. 88 Recorder Richard Brown

G 15
 1M-13XB-W
 1-9-48

REAL ESTATE DEPT RECORD

DRAWER.....ATLAS.....ROLL MAP.....MAP.....
 CASE NUMBER.....

Deed Vol 219 Pg 288



LEGEND:
 PROPOSED SALE - - - - -
 Lease to Grantee
 PO#D-C-284

APPROVED H. Morgan
 REGIONAL ENGINEER

THE PENNSYLVANIA RAILROAD
 BUCKEYE REG.-COLUMBUS DIST.
 CONN. RY. - AKRON BR.
 PROPERTY TO BE CONVEYED
 BY
 THE CONNECTING RAILWAY
 TO
 HOLMES COUNTY FARM BUREAU
 SCALE 1 IN. = 100' DATE 9-21-56
 MADE BY J.E.E. CHECKED BY WWP

LOCATION: VALUATION SECTION NO. 10-OHIO ~ MAP 34
 WARD..... CITY MILLERSBURG BOROUGH.....
 TOWNSHIP HARDY COUNTY HOLMES STATE OHIO