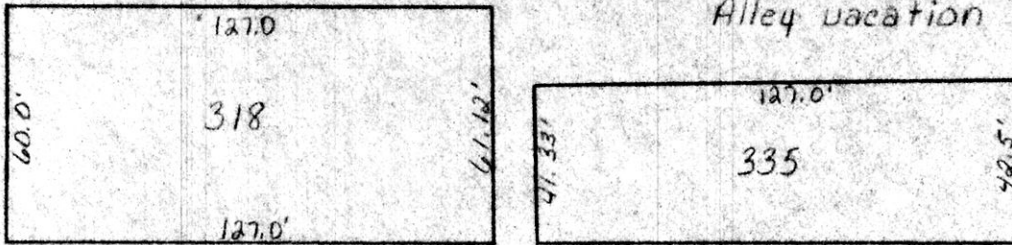


135061

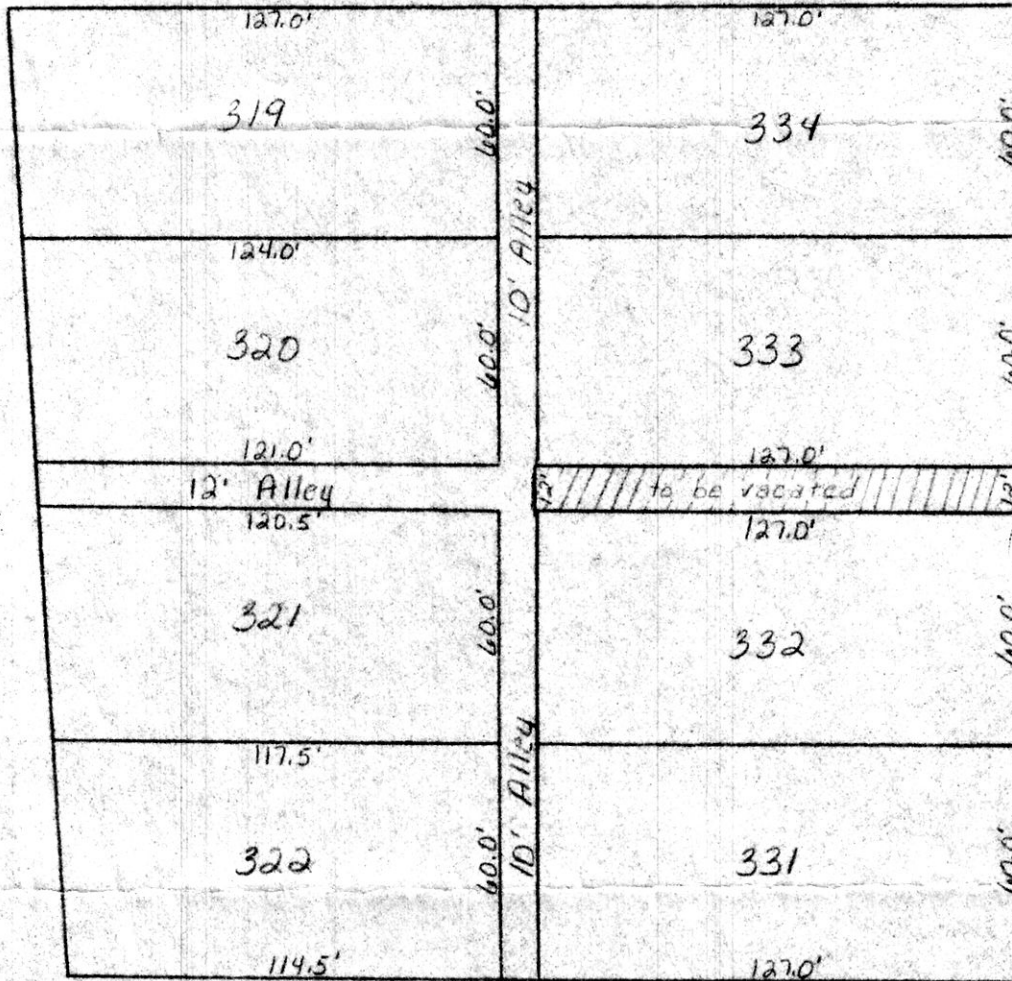
Ingles 1st Addition to Millersburg Village

Alley vacation

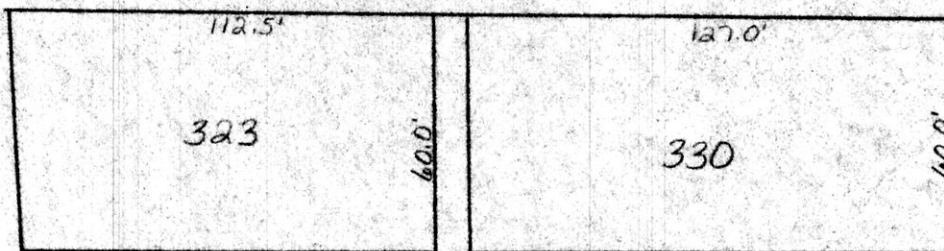


Newton Ave. 49.5' wide

S 88° 30' E



Engel St. 49.5' wide



Scale: 1" = 50'



MAP OFFICE COPY

This is not a survey. The information in this drawing was obtained from the plat of John Ingles' Addition to the town of Millersburg, recorded in Plat Book Volume 1 - Page 31.

135061

APPROVED BY
TAX MAP OFFICE

Rec'd. Dec. 13, 1982 AT 11:03 O'CLOCK AM

Date May 13, 81 JM

Recorded Dec. 13, 1982 Holmes Co. Ohio Fee: 2.00

Plat Vol. 10 Pg. 80 Recorder Richard Graven

Deed Vol. 218 - Pg. 991