

134280

# SURVEY of a 28.292 ACRE PARCEL

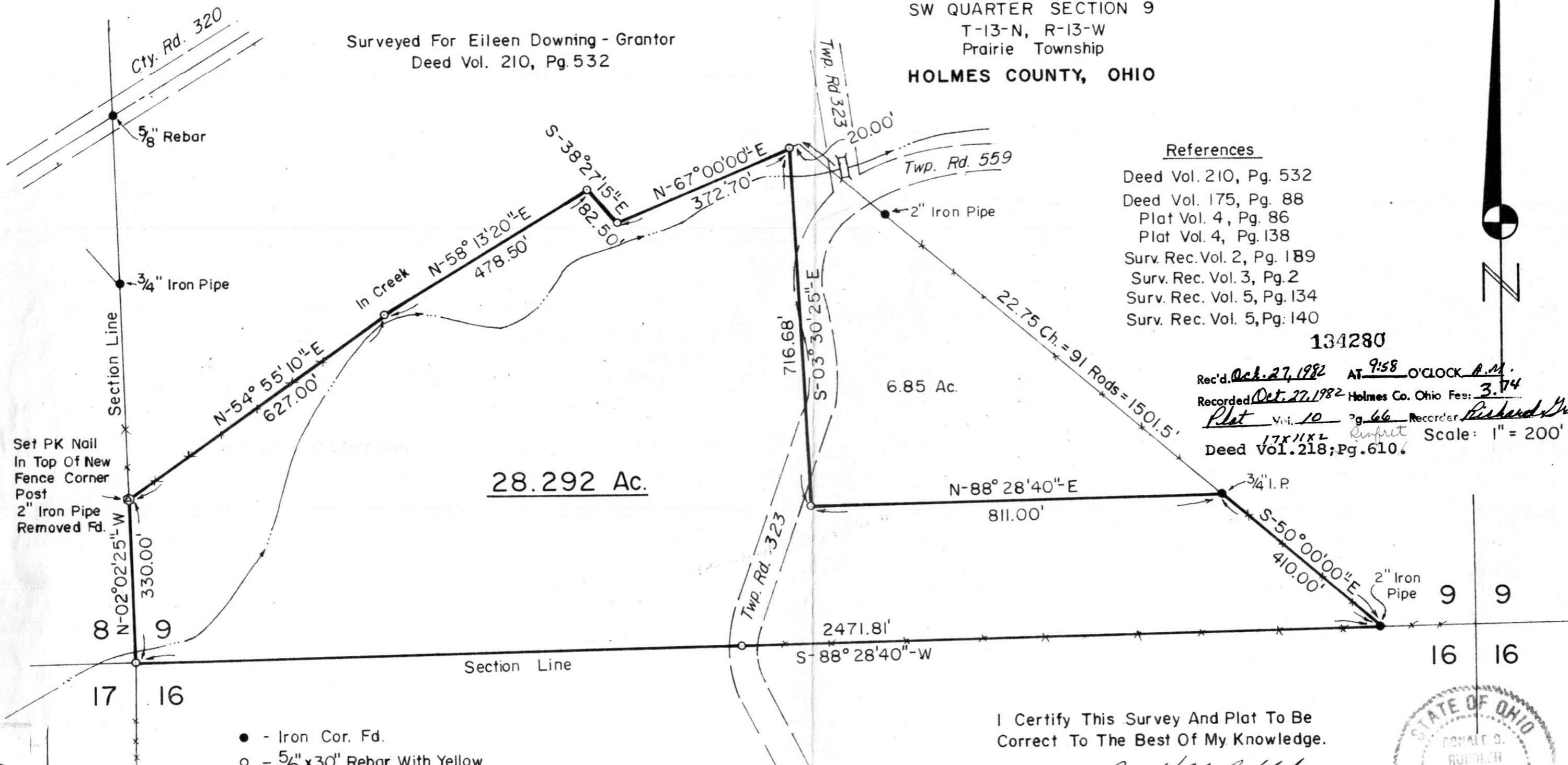
SW QUARTER SECTION 9

T-13-N, R-13-W

Prairie Township

HOLMES COUNTY, OHIO

Surveyed For Eileen Downing - Grantor  
Deed Vol. 210, Pg. 532



### References

- Deed Vol. 210, Pg. 532
- Deed Vol. 175, Pg. 88
- Plat Vol. 4, Pg. 86
- Plat Vol. 4, Pg. 138
- Surv. Rec. Vol. 2, Pg. 189
- Surv. Rec. Vol. 3, Pg. 2
- Surv. Rec. Vol. 5, Pg. 134
- Surv. Rec. Vol. 5, Pg. 140

134280

Rec'd. Oct. 27, 1982 AT 9:58 O'CLOCK A.M.  
 Recorded Oct. 27, 1982 Holmes Co. Ohio Fee: 3.74  
 Plat Vol. 10 Pg. 66 Recorder Richard Drayton  
 Deed Vol. 218; Pg. 610 Scale: 1" = 200'

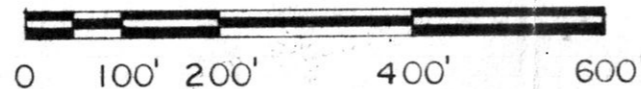
28.292 Ac.

6.85 Ac.

9	9
16	16

- - Iron Cor. Fd.
- - 5/8" x 30" Rebar With Yellow Plastic Cap Marked RUDOLPH 6449 Set

## MAP OFFICE COPY



I Certify This Survey And Plat To Be Correct To The Best Of My Knowledge.

9-16-82 Ronald G. Rudolph

Date Ronald G. Rudolph - Reg. Surv. 6449  
 R.G. RUDOLPH SURVEYING, Inc.  
 1175 Summerset Dr.  
 Wooster, Ohio 44691



Job No. 880