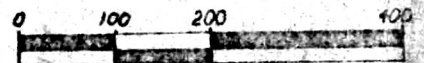


RIPLEY TOWNSHIP
 HOLMES COUNTY OHIO
 N.W. Qtr., Sec. 3, T-17, R-14

CURVE DATA:

Δ = 23° 34' 27"
 R = 696.35'
 L = 286.51'
 Chd = 284.50'
 Chd Brg = S 42° 35' 16" E
 T = 145.31'

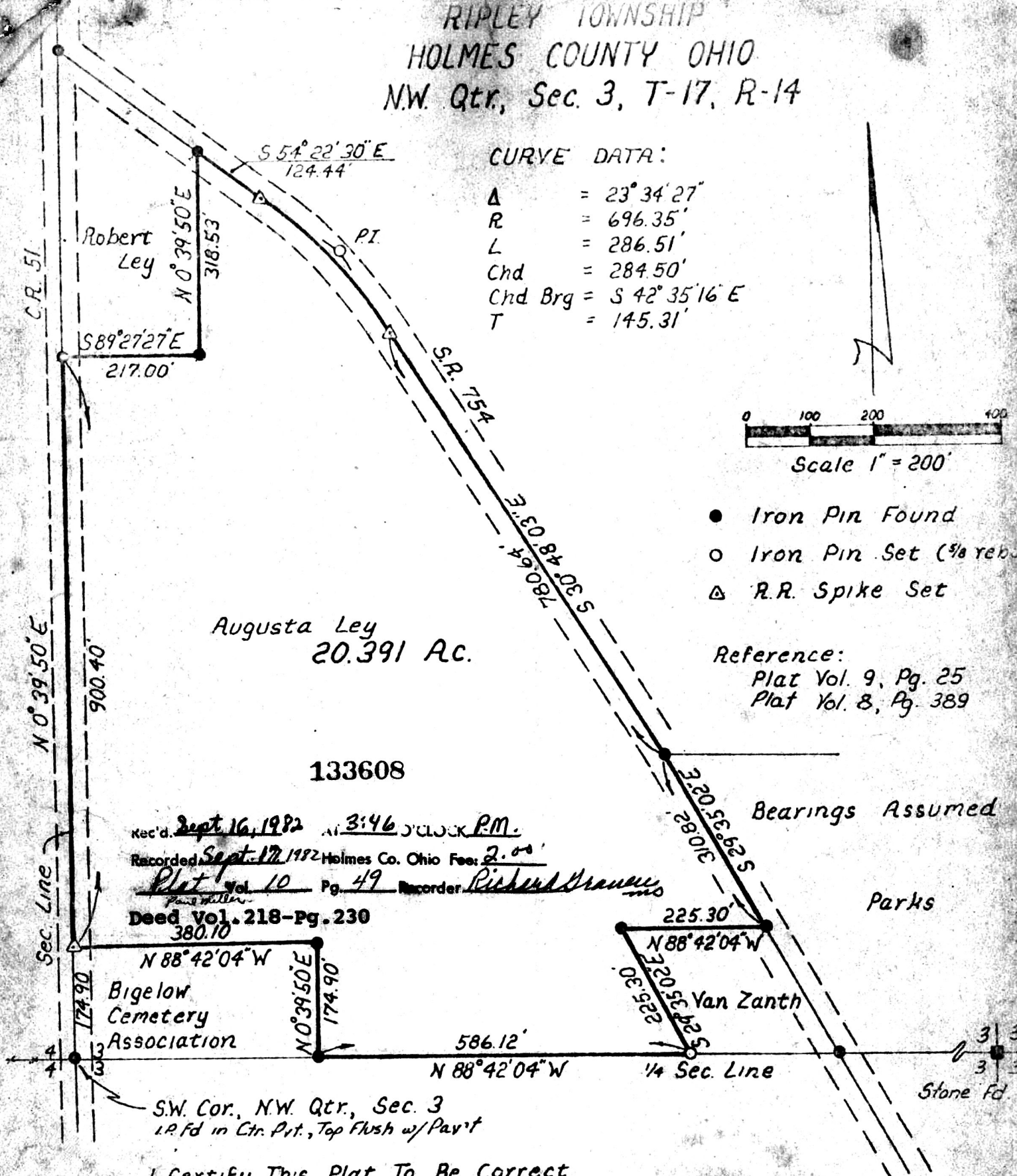


Scale 1" = 200'

- Iron Pin Found
- Iron Pin Set (1/8 reb.)
- △ R.R. Spike Set

Reference:

Plat Vol. 9, Pg. 25
 Plat Vol. 8, Pg. 389



Rec'd. Sept 16, 1982 at 3:46 O'CLOCK P.M.
 Recorded Sept 17, 1982 Holmes Co. Ohio Fee: 2.00
Plat Vol. 10 Pg. 49 Recorder Richard H. ...
 Deed Vol. 218-Pg. 230
 380.10

N 88° 42' 04" W
 Bigelow
 Cemetery
 Association
 N 0° 39' 50" E
 174.90

225.30'
 N 88° 42' 04" W
 Van Zanth
 S 20° 53' 52" E
 220.35'

S.W. Cor., N.W. Qtr., Sec. 3
 I.P. fd in Ctr. Pnt., Top Flush w/ Pav't

I Certify This Plat To Be Correct
 To The Best of My Knowledge.
William H. Long Aug 20, 1982
 William H. Long R.S. 6505

MAP OFFICE COPY