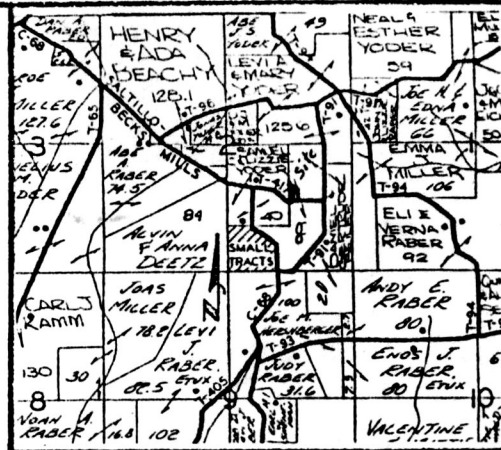


# Buckeye Land Surveying, Inc.

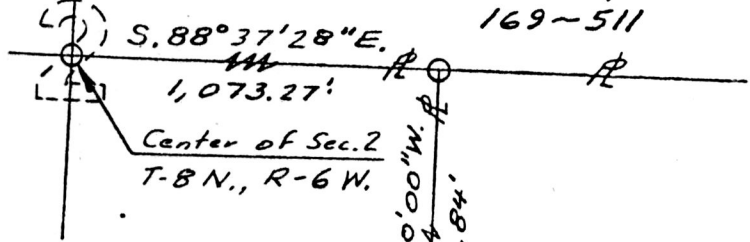
George W. Johnson 215 South Fifth Street, R. • Coshocton, Ohio 43812 (614) 622-4210  
Professional Land Surveyor "Service is more than a promise"

133214



LOCATION MAP

Levi A. & Mary Yoder  
169~511



### LEGEND

- ⊙ 3/4" Iron Pipes - 30" Long or Longer
- Property Lines
- Surveyed Lot Lines
- - - Edge of Road

### NOTE

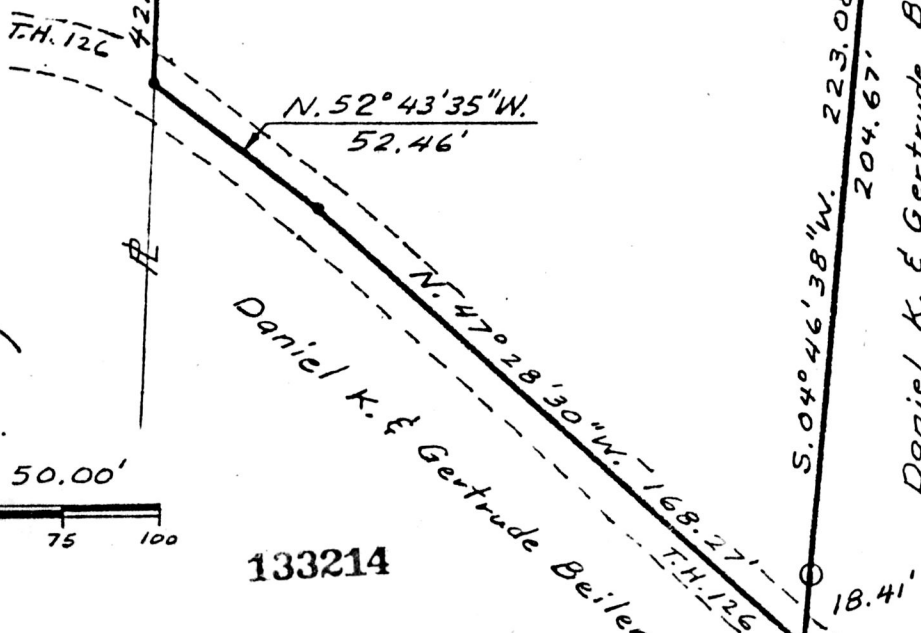
Bearings & North Arrow are based on Q.B. 183, Page 709, Holmes County Deed Records.

Phineas S. & Barbara Yoder  
209~389

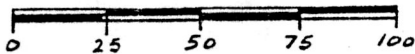
Daniel K. & Gertrude Beiler  
183~709

0.896 Ac.±

Daniel K. & Gertrude Beiler  
183~709



Scale: 1" = 50.00'



133214

Rec'd. Aug. 27, 1982 AT 10:29 O'CLOCK A.M.  
Recorded Aug. 27, 1982 Holmes Co. Ohio Fees 2.00  
Plat Vol. 10 Pg. 42 Recorder Richard Craven  
Deed Vol. 218 Pg. 7



I HEREBY CERTIFY THAT THIS PLAT IS A TRUE DELINEATION OF A SURVEY BY GEORGE W. JOHNSON R.S. #5252

*George W. Johnson*

DANIEL K. AND GERTRUDE BEILER  
TO  
DENNIS HARDEN

Being a part of the South East Quarter of Section Two in Township 8, of Range 6, Township of Mechanic, County of Holmes, State of Ohio

Scale: 1" = 50.00' Date: July, 1982

**MAP OFFICE COPY**